

Datasheet for ABIN7043610

**anti-Sema4a antibody (Extracellular, N-Term)**[Go to Product page](#)

## 4 Images

## Overview

Quantity:	0.2 mL
Target:	Sema4a
Binding Specificity:	AA 355-369, Extracellular, N-Term
Reactivity:	Human, Mouse, Rat
Host:	Rabbit
Clonality:	Polyclonal
Conjugate:	This Sema4a antibody is un-conjugated
Application:	Western Blotting (WB), Immunohistochemistry (IHC), Flow Cytometry (FACS)

## Product Details

Immunogen:	Immunogen: Synthetic peptide Immunogen Sequence: (C)KELNKETSRWTTYRG, corresponding to amino acid residues 355 - 369 of human Semaphorin 4A
Isotype:	IgG
Characteristics:	Anti-Semaphorin 4A (SEMA4A) (extracellular) Antibody (ABIN7043610, ABIN7045300 and ABIN7045301)) is a highly specific antibody directed against an extracellular epitope of the human protein. The antibody can be used in western blot, immunohistochemistry and flow cytometry applications. It has been designed to recognize Semaphorin 4A from mouse, rat and human samples.
Purification:	Affinity purified on immobilized antigen.

## Target Details

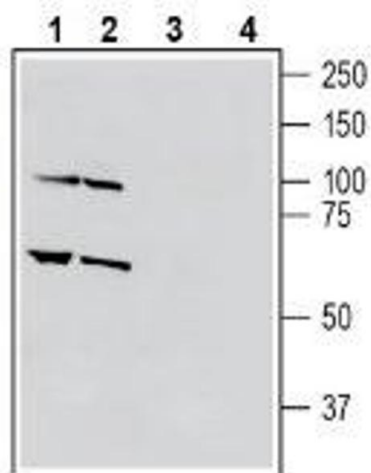
Target:	Sema4a
Alternative Name:	Semaphorin 4A (SEMA4A) ( <a href="#">Sema4a Products</a> )
Background:	Alternative names: SEMAB
Gene ID:	42383
NCBI Accession:	<a href="#">NM_022367</a>
UniProt:	<a href="#">Q9H3S1</a>

## Application Details

Application Notes:	Optimal working dilution should be determined by the investigator.
Restrictions:	For Research Use only

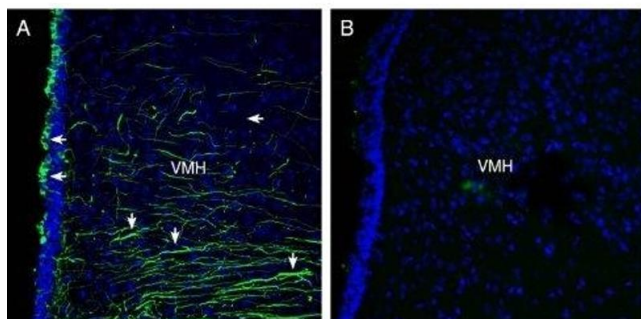
## Handling

Format:	Lyophilized
Reconstitution:	25 µL, 50 µL or 0.2 mL double distilled water (DDW), depending on the sample size.
Concentration:	0.8 mg/mL
Buffer:	Reconstituted antibody contains phosphate buffered saline (PBS), pH 7.4, 1 % BSA, 0.05 % Sodium azide.
Preservative:	Sodium azide
Precaution of Use:	This product contains Sodium azide: a POISONOUS AND HAZARDOUS SUBSTANCE which should be handled by trained staff only.
Storage:	RT, 4 °C, -20 °C
Storage Comment:	<p>Storage before reconstitution: The antibody ships as a lyophilized powder at room temperature. Upon arrival, it should be stored at -20°C.</p> <p>Storage after reconstitution: The reconstituted solution can be stored at 4°C for up to 1 week. For longer periods, small aliquots should be stored at -20°C. Avoid multiple freezing and thawing. Centrifuge all antibody preparations before use (10000 x g 5 min).</p>



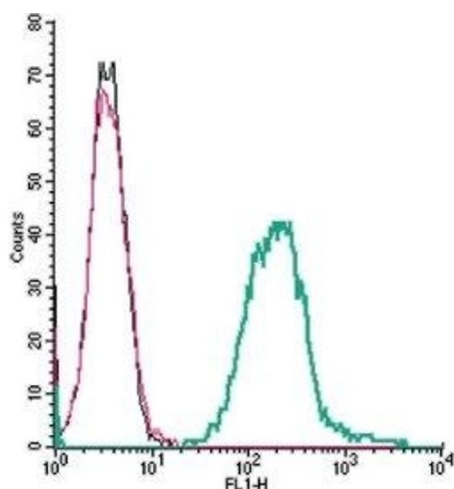
### Western Blotting

**Image 1.** Western blot analysis of human THP-1 monocytic leukemia cell line lysate (lanes 1 and 3) and human HL-60 promyelocytic leukemia cell line lysate (lanes 2 and 4): - 1-2. Anti-Semaphorin 4A (SEMA4A) (extracellular) Antibody (ABIN7043610, ABIN7045300 and ABIN7045301), (1:400). 3-4. Anti-Semaphorin 4A (SEMA4A) (extracellular) Antibody, preincubated with Semaphorin 4A (SEMA4A) (extracellular) Blocking Peptide (BLP-SR065).



### Immunohistochemistry

**Image 2.** Expression of Semaphorin 4A in rat hypothalamus - Immunohistochemical staining of perfusion-fixed frozen rat brain sections with Anti-Semaphorin 4A (SEMA4A) (extracellular) Antibody (ABIN7043610, ABIN7045300 and ABIN7045301), (1:300), followed by goat anti-rabbit-Alexa-488. A. Semaphorin 4A immunoreactivity (green) appears in the ventricular wall (horizontal arrows) and in tanyocyte processes (vertical arrows). B. Pre-incubation of the antibody with Semaphorin 4A (SEMA4A) (extracellular) Blocking Peptide (BLP-SR065), suppressed staining. Cell nuclei are stained with DAPI (blue). 3V = 3rd cerebral ventricle, VMH = ventromedial hypothalamus.



### Flow Cytometry

**Image 3.** Cell surface detection of Semaphorin 4A by indirect flow cytometry in live intact mouse J774 monocyte cells: (black line) Cells.(red line) Cells + goat-anti-rabbit-FITC.(green line) Cells + Anti-Semaphorin 4A (SEMA4A) (extracellular) Antibody (ABIN7043610, ABIN7045300 and ABIN7045301), (2.5 µg) + goat-anti-rabbit-FITC.

Please check the [product details page](#) for more images. Overall 4 images are available for ABIN7043610.