

Datasheet for ABIN7043613  
**anti-SEMA7A antibody (Extracellular)**

## 3 Images

[Go to Product page](#)

## Overview

Quantity:	50 µL
Target:	SEMA7A
Binding Specificity:	AA 190-203, Extracellular
Reactivity:	Human, Mouse, Rat
Host:	Rabbit
Clonality:	Polyclonal
Conjugate:	This SEMA7A antibody is un-conjugated
Application:	Western Blotting (WB), Flow Cytometry (FACS)

## Product Details

Immunogen:	Immunogen: Synthetic peptide Immunogen Sequence: (C)RKQEYNGKIPRFRR, corresponding to amino acid residues 190-203 of mouse SEMA7A
Isotype:	IgG
Characteristics:	Anti-Semaphorin 7A (SEMA7A) (extracellular) Antibody (ABIN7043613, ABIN7045302 and ABIN7045303)) is a highly specific antibody directed against an epitope of the mouse protein. The antibody can be used in western blot and live cell flow cytometry applications. It has been designed to recognize SEMA7A from rat, mouse, and human samples.
Purification:	Affinity purified on immobilized antigen.

## Target Details

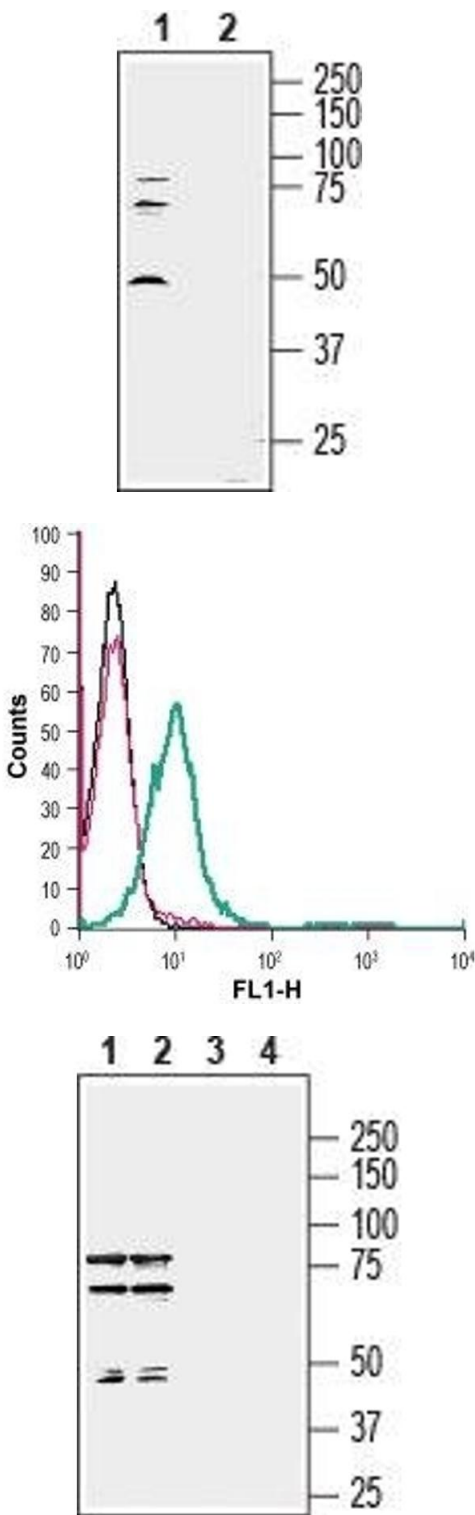
Target:	SEMA7A
Alternative Name:	Semaphorin 7A (SEMA7A) ( <a href="#">SEMA7A Products</a> )
Background:	Alternative names: Semaphorin 7A (SEMA7A), CD108, Semaphorin-K1, Semaphorin-L, JMH blood group antigen
Gene ID:	20361
NCBI Accession:	<a href="#">NM_003612</a>
UniProt:	<a href="#">Q9QUR8</a>
Pathways:	<a href="#">Positive Regulation of Immune Effector Process</a> , <a href="#">Production of Molecular Mediator of Immune Response</a> , <a href="#">Regulation of Cell Size</a>

## Application Details

Application Notes:	Optimal working dilution should be determined by the investigator.
Restrictions:	For Research Use only

## Handling

Format:	Lyophilized
Reconstitution:	25 µL, 50 µL or 0.2 mL double distilled water (DDW), depending on the sample size.
Concentration:	0.8 mg/mL
Buffer:	Reconstituted antibody contains phosphate buffered saline (PBS), pH 7.4, 1 % BSA, 0.05 % Sodium azide.
Preservative:	Sodium azide
Precaution of Use:	This product contains Sodium azide: a POISONOUS AND HAZARDOUS SUBSTANCE which should be handled by trained staff only.
Storage:	RT, 4 °C, -20 °C
Storage Comment:	<p>Storage before reconstitution: The antibody ships as a lyophilized powder at room temperature. Upon arrival, it should be stored at -20°C.</p> <p>Storage after reconstitution: The reconstituted solution can be stored at 4°C for up to 1 week. For longer periods, small aliquots should be stored at -20°C. Avoid multiple freezing and thawing. Centrifuge all antibody preparations before use (10000 x g 5 min).</p>



### Western Blotting

**Image 1.** Western blot analysis of human Jurkat T-cell leukemia cell line lysate: - 1. Anti-Semaphorin 7A (SEMA7A) (extracellular) Antibody (ABIN7043613, ABIN7045302 and ABIN7045303), (1:400).2. Anti-Semaphorin 7A (SEMA7A) (extracellular) Antibody, preincubated with Semaphorin 7A/SEMA7A (extracellular) Blocking Peptide (#BLP-SR077).

### Flow Cytometry

**Image 2.** Cell surface detection of Semaphorin 7A in live intact human Jurkat T-cell leukemia cells: (black line) Cells.(red line) Cells + goat-anti-rabbit-FITC.(green line) Cells + Anti-Semaphorin 7A (SEMA7A) (extracellular) Antibody (ABIN7043613, ABIN7045302 and ABIN7045303), (5 µg) + goat-anti-rabbit-FITC.

### Western Blotting

**Image 3.** Western blot analysis of rat (lanes 1 and 3) and mouse (lanes 2 and 4) brain membranes: - 1,2. Anti-Semaphorin 7A (SEMA7A) (extracellular) Antibody (ABIN7043613, ABIN7045302 and ABIN7045303), (1:200).3,4. Anti-Semaphorin 7A (SEMA7A) (extracellular) Antibody, preincubated with Semaphorin 7A/SEMA7A (extracellular) Blocking Peptide (#BLP-SR077).