

Datasheet for ABIN7043628

anti-SIGMAR1 antibody (C-Term, Intracellular)[Go to Product page](#)**1** Image

Overview

Quantity:	25 µL
Target:	SIGMAR1
Binding Specificity:	AA 113-126, C-Term, Intracellular
Reactivity:	Human, Mouse, Rat
Host:	Rabbit
Clonality:	Polyclonal
Conjugate:	This SIGMAR1 antibody is un-conjugated
Application:	Western Blotting (WB)

Product Details

Immunogen:	Immunogen: Synthetic peptide
	Immunogen Sequence: (C)SRGHSGRYWAEISD, corresponding to amino acid residues 113-126 of human SIGMAR1
Isotype:	IgG
Characteristics:	Anti-Sigma-1 Receptor Antibody (ABIN7043628, ABIN7044522 and ABIN7044523)) is a highly specific antibody directed against an epitope of the human protein. The antibody can be used in western blot analysis. It has been designed to recognize SIGMAR1 from human, rat, and mouse samples.
Purification:	Affinity purified on immobilized antigen.

Target Details

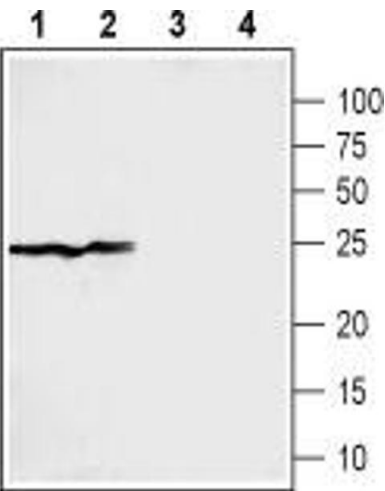
Target:	SIGMAR1
Alternative Name:	Sigma-1 Receptor (SIGMAR1 Products)
Background:	Alternative names: Sigma-1 Receptor, SIGMAR1, OPRS1, Sigma non-opioid intracellular receptor 1, SIG-1R, Aging-associated gene 8 protein, SR31747-binding protein, SRBP
Gene ID:	10280
NCBI Accession:	NM_005866
UniProt:	Q99720
Pathways:	SARS-CoV-2 Protein Interactome

Application Details

Application Notes:	Optimal working dilution should be determined by the investigator.
Restrictions:	For Research Use only

Handling

Format:	Lyophilized
Reconstitution:	25 µL, 50 µL or 0.2 mL double distilled water (DDW), depending on the sample size.
Concentration:	0.85 mg/mL
Buffer:	Reconstituted antibody contains phosphate buffered saline (PBS), pH 7.4, 1 % BSA, 0.05 % Sodium azide.
Preservative:	Sodium azide
Precaution of Use:	This product contains Sodium azide: a POISONOUS AND HAZARDOUS SUBSTANCE which should be handled by trained staff only.
Storage:	RT, 4 °C, -20 °C
Storage Comment:	<p>Storage before reconstitution: The antibody ships as a lyophilized powder at room temperature. Upon arrival, it should be stored at -20°C.</p> <p>Storage after reconstitution: The reconstituted solution can be stored at 4°C for up to 1 week. For longer periods, small aliquots should be stored at -20°C. Avoid multiple freezing and thawing. Centrifuge all antibody preparations before use (10000 x g 5 min).</p>



Western Blotting

Image 1. Western blot analysis of rat (lanes 1 and 3) and mouse (lanes 2 and 4) liver membranes: - 1,2. Anti-Sigma-1 Receptor Antibody ((ABIN7043628, ABIN7044522 and ABIN7044523), (1:200).3,4. Anti-Sigma-1 Receptor Antibody, preincubated with Sigma-1 Receptor Blocking Peptide (#BLP-IP006).