

Datasheet for ABIN7043658

anti-NALCN antibody (Domain 3, Extracellular)**3** Images[Go to Product page](#)

Overview

Quantity:	50 µL
Target:	NALCN
Binding Specificity:	AA 902-914, Domain 3, Extracellular
Reactivity:	Rat, Human, Mouse
Host:	Rabbit
Clonality:	Polyclonal
Conjugate:	This NALCN antibody is un-conjugated
Application:	Western Blotting (WB), Immunocytochemistry (ICC), Immunofluorescence (IF), Immunohistochemistry (IHC), Live Cell Imaging (LCI)

Product Details

Immunogen:	Immunogen: Synthetic peptide Immunogen Sequence: (C)SMMFESPFRVMH, corresponding to amino acid residues 902-914 of rat NALCN
Isotype:	IgG
Characteristics:	Anti-NALCN/VGCLN1 (extracellular) Antibody (ABIN7043658 and ABIN7045249)) is a highly specific antibody directed against an epitope of rat Sodium leak channel non-selective protein. The antibody can be used in western blot, immunohistochemistry and live cell imaging applications. It has been designed to recognize NALCN from mouse, rat, and human samples.
Purification:	Affinity purified on immobilized antigen.

Target Details

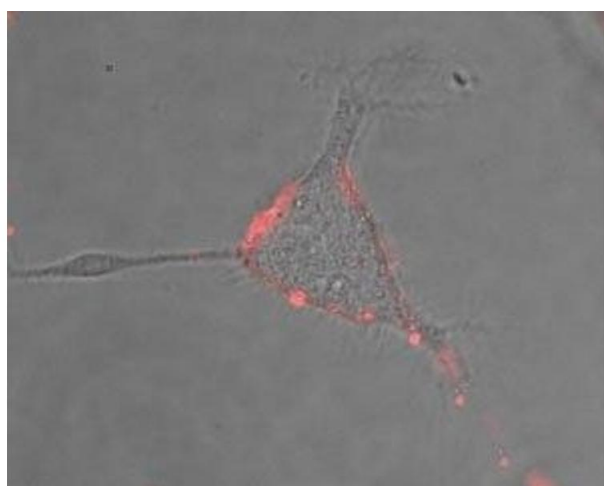
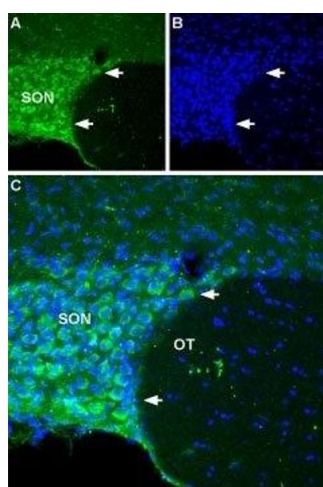
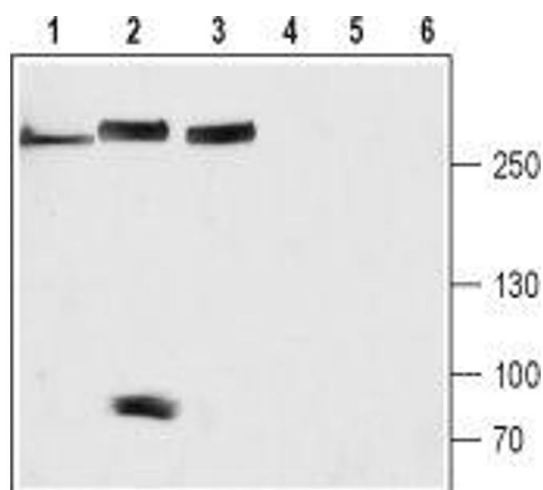
Target:	NALCN
Alternative Name:	NALCN/VGCNL1 (NALCN Products)
Background:	Alternative names: NALCN/VGCNL1, Sodium leak channel non-selective protein, Voltage gated channel-like protein 1, Four domain-type voltage-gated ion channel alpha-1 subunit, Canlon, Rb21-channel
Gene ID:	266760
NCBI Accession:	NM_052867
UniProt:	Q6Q760

Application Details

Application Notes:	Optimal working dilution should be determined by the investigator.
Restrictions:	For Research Use only

Handling

Format:	Lyophilized
Reconstitution:	50 µL or 0.2 mL double distilled water (DDW), depending on the sample size.
Concentration:	0.8 mg/mL
Buffer:	Reconstituted antibody contains phosphate buffered saline (PBS), pH 7.4, 1 % BSA, 0.05 % Sodium azide.
Preservative:	Sodium azide
Precaution of Use:	This product contains Sodium azide: a POISONOUS AND HAZARDOUS SUBSTANCE which should be handled by trained staff only.
Storage:	RT, 4 °C, -20 °C
Storage Comment:	<p>Storage before reconstitution: The antibody ships as a lyophilized powder at room temperature. Upon arrival, it should be stored at -20°C.</p> <p>Storage after reconstitution: The reconstituted solution can be stored at 4°C for up to 1 week. For longer periods, small aliquots should be stored at -20°C. Avoid multiple freezing and thawing. Centrifuge all antibody preparations before use (10000 x g 5 min).</p>



Western Blotting

Image 1. Western blot analysis of rat brain (lanes 1 and 4), mouse heart (lanes 2 and 5) and SH-SY5Y cell (lanes 3 and 6) lysates: - 1-3. Anti-NALCN/VGCNL1 (extracellular) Antibody (ABIN7043658 and ABIN7045249), (1:200). 4-6. Anti-NALCN/VGCNL1 (extracellular) Antibody, preincubated with NALCN/VGCNL1 (extracellular) Blocking Peptide (#BLP-SC022).

Immunohistochemistry

Image 2. Expression of NALCN in rat hypothalamus - Immunohistochemical staining of rat hypothalamus using Anti-NALCN/VGCNL1 (extracellular) Antibody (ABIN7043658 and ABIN7045249). A. NALCN (green) staining appears in the supra-optic nucleus (SON). B. DAPI is used as the counterstain (blue). White arrows point at the sharp border between the SON and optic tract (OT). C. Merged images of A and B.

Immunocytochemistry

Image 3. Expression of NALCN in rat PC12 cells - Cell surface detection of NALCN in intact living rat pheochromocytoma PC12 cells. Extracellular staining of cells using Anti-NALCN/VGCNL1 (extracellular) Antibody (ABIN7043658 and ABIN7045249), (1:50) followed by goat anti-rabbit-AlexaFluor-594 secondary antibody. Merged image of extracellular staining with live image of the cells.