

Datasheet for ABIN7043659

anti-ATP1A1 antibody (Intracellular, N-Term)

4 Images

[Go to Product page](#)

Overview

Quantity:	25 µL
Target:	ATP1A1
Binding Specificity:	AA 7-20, Intracellular, N-Term
Reactivity:	Human, Rat, Mouse
Host:	Rabbit
Clonality:	Polyclonal
Conjugate:	This ATP1A1 antibody is un-conjugated
Application:	Western Blotting (WB), Immunohistochemistry (IHC), Immunofluorescence (IF)

Product Details

Immunogen:	Immunogen: Synthetic peptide
	Immunogen Sequence: (C)RDKYEPAAVSEHGD, corresponding to amino acid residues 7- 20 of rat ATP1A1
Isotype:	IgG
Characteristics:	Anti-Alpha 1 Na ⁺ /K ⁺ ATPase Antibody (ABIN7043659, ABIN7044637 and ABIN7044638)) is a highly specific antibody directed against an epitope of the rat ATP1A1. The antibody can be used in western blot and immunohistochemistry applications. It has been designed to recognize ATP1A1 from rat, mouse, and human samples.
Purification:	Affinity purified on immobilized antigen.

Target Details

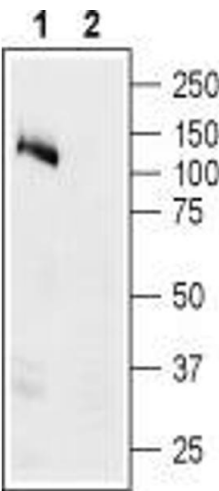
Target:	ATP1A1
Alternative Name:	Alpha 1 Na ⁺ /K ⁺ ATPase (ATP1A1 Products)
Background:	Alternative names: Alpha 1 Na ⁺ /K ⁺ ATPase, ATP1A1, Sodium/potassium ATPase catalytic subunit alpha-1, Sodium pump subunit alpha-1
Gene ID:	24211
NCBI Accession:	NM_001160233
UniProt:	P06685
Pathways:	Thyroid Hormone Synthesis , Regulation of Hormone Metabolic Process , Regulation of Hormone Biosynthetic Process , Proton Transport , Ribonucleoside Biosynthetic Process

Application Details

Application Notes:	Optimal working dilution should be determined by the investigator.
Restrictions:	For Research Use only

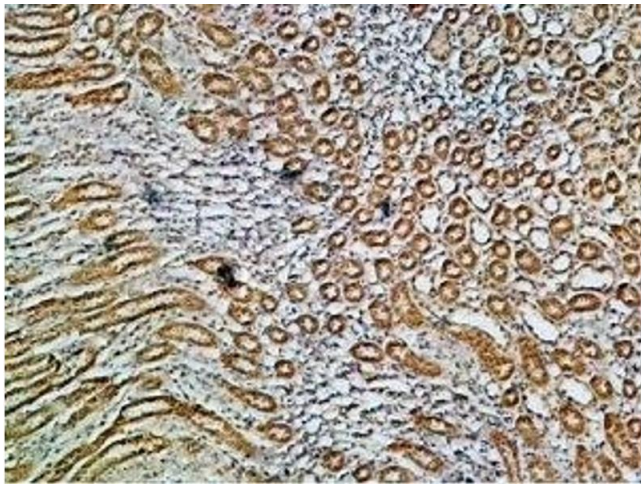
Handling

Format:	Lyophilized
Reconstitution:	25 µL, 50 µL or 0.2 mL double distilled water (DDW), depending on the sample size.
Concentration:	0.8 mg/mL
Buffer:	Reconstituted antibody contains phosphate buffered saline (PBS), pH 7.4, 1 % BSA, 0.05 % Sodium azide.
Preservative:	Sodium azide
Precaution of Use:	This product contains Sodium azide: a POISONOUS AND HAZARDOUS SUBSTANCE which should be handled by trained staff only.
Storage:	RT, 4 °C, -20 °C, 37 °C
Storage Comment:	<p>Storage before reconstitution: The antibody ships as a lyophilized powder at room temperature. Upon arrival, it should be stored at -20°C.</p> <p>Storage after reconstitution: The reconstituted solution can be stored at 4°C for up to 1 week. For longer periods, small aliquots should be stored at -20°C. Avoid multiple freezing and thawing. Centrifuge all antibody preparations before use (10000 x g 5 min).</p>



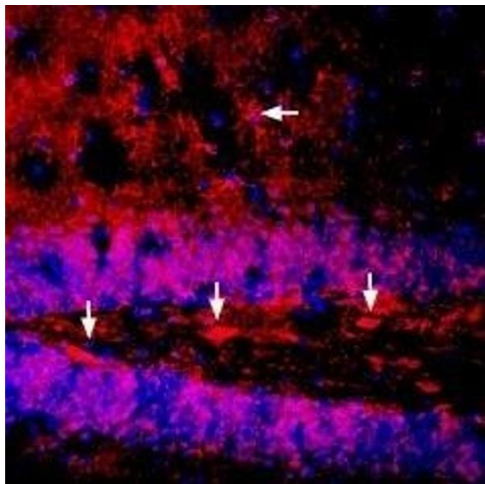
Western Blotting

Image 1. Western blot analysis of human Colo-205 colon adenocarcinoma cell lysate: - 1. Anti-Alpha 1 Na⁺/K⁺ ATPase Antibody (ABIN7043659, ABIN7044637 and ABIN7044638), (1:200). 2. Anti-Alpha 1 Na⁺/K⁺ ATPase Antibody, preincubated with Alpha 1 Na⁺/K⁺ ATPase Blocking Peptide (#BLP-NP001). Note: Samples should be heated up to 37 °C. Do not boil samples.



Immunohistochemistry

Image 2. Expression of Na⁺/K⁺ ATPase α1 (ATP1A1) in rat kidney - Immunohistochemical staining of paraffin embedded rat kidney sections using Anti-Alpha 1 Na⁺/K⁺ ATPase Antibody (ABIN7043659, ABIN7044637 and ABIN7044638), (1:200). ATP1A1 staining (brown) is present in collecting ducts and thick portions of the Henle loop in the renal medulla. Hematoxylin is used as the counterstain.



Immunohistochemistry

Image 3. Expression of Na⁺/K⁺ ATPase α1 (ATP1A1) in mouse brain - Immunohistochemical staining of immersion-fixed, free floating mouse brain frozen sections using Anti-Alpha 1 Na⁺/K⁺ ATPase Antibody (ABIN7043659, ABIN7044637 and ABIN7044638), (1:400). ATP1A1 staining (red) is apparent in the hippocampal dentate gyrus in neuronal soma (vertical arrows) and in astrocytes (horizontal arrow). DAPI (blue) is used to visualize cell nuclei.

Please check the [product details page](#) for more images. Overall 4 images are available for ABIN7043659.