

Datasheet for ABIN7043660

anti-SLC1A2 antibody (2nd Extracellular Loop)



[Go to Product page](#)

4 Images

Overview

Quantity:	25 µL
Target:	SLC1A2
Binding Specificity:	2nd Extracellular Loop
Reactivity:	Human, Mouse, Rat
Host:	Rabbit
Clonality:	Polyclonal
Conjugate:	This SLC1A2 antibody is un-conjugated
Application:	Western Blotting (WB), Immunohistochemistry (IHC), Immunocytochemistry (ICC), Immunofluorescence (IF), Live Cell Imaging (LCI)

Product Details

Immunogen:	Immunogen: Synthetic peptide Immunogen Sequence: (C)KQLGPGKKNDEVS, corresponding to amino acid residues 151-163 of rat EAAT2
Isotype:	IgG
Characteristics:	Anti-EAAT2 (GLT-1) (extracellular) Antibody (ABIN7043660, ABIN7044354 and ABIN7044355) is a highly specific antibody directed against an epitope located at the second extracellular loop of the rat Excitatory amino acid transporter 2. The antibody can be used in western blot, live cell imaging, and immunohistochemistry applications. It has been designed to recognize EAAT2 from human, rat, and mouse samples.
Purification:	Affinity purified on immobilized antigen.

Target Details

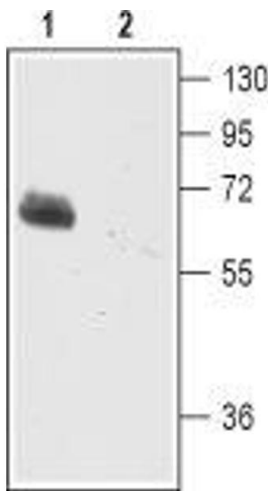
Target:	SLC1A2
Alternative Name:	EAAT2 (GLT-1) (SLC1A2 Products)
Background:	Alternative names: EAAT2 (GLT-1), Excitatory amino acid transporter 2, Sodium-dependent glutamate/aspartate transporter 2, SLC1A2
Gene ID:	29482
NCBI Accession:	NM_004171
UniProt:	P31596
Pathways:	Dicarboxylic Acid Transport

Application Details

Application Notes:	Optimal working dilution should be determined by the investigator.
Restrictions:	For Research Use only

Handling

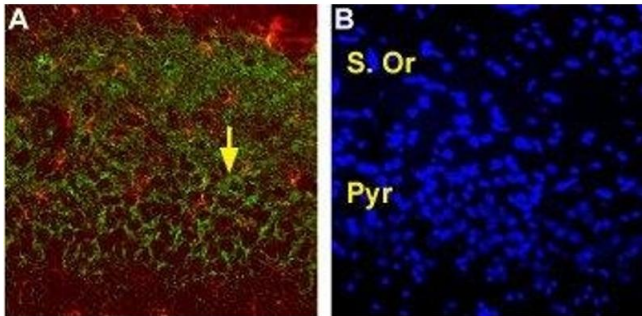
Format:	Lyophilized
Reconstitution:	25 µL, 50 µL or 0.2 mL double distilled water (DDW), depending on the sample size.
Concentration:	0.8 mg/mL
Buffer:	Reconstituted antibody contains phosphate buffered saline (PBS), pH 7.4, 1 % BSA, 0.05 % Sodium azide.
Preservative:	Sodium azide
Precaution of Use:	This product contains Sodium azide: a POISONOUS AND HAZARDOUS SUBSTANCE which should be handled by trained staff only.
Storage:	RT, 4 °C, -20 °C
Storage Comment:	<p>Storage before reconstitution: The antibody ships as a lyophilized powder at room temperature. Upon arrival, it should be stored at -20°C.</p> <p>Storage after reconstitution: The reconstituted solution can be stored at 4°C for up to 1 week. For longer periods, small aliquots should be stored at -20°C. Avoid multiple freezing and thawing. Centrifuge all antibody preparations before use (10000 x g 5 min).</p>



Western Blotting

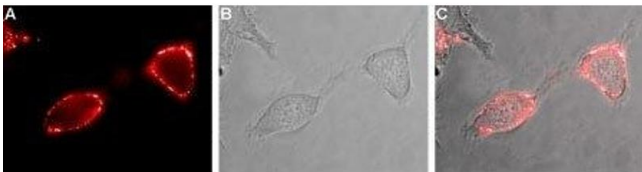
Image 1. Western blot analysis of mouse brain membranes:

- 1. Anti-EAAT2 (GLT-1) (extracellular) Antibody (ABIN7043660, ABIN7044354 and ABIN7044355), (1:200).
- 2. Anti-EAAT2 (GLT-1) (extracellular) Antibody, preincubated with EAAT2/GLT-1 (extracellular) Blocking Peptide (#BLP-GC022).



Immunohistochemistry

Image 2. Expression of EAAT2 in rat hippocampus - Immunohistochemical staining of perfusion-fixed, free floating frozen rat brain sections with Anti-EAAT2 (GLT-1) (extracellular) Antibody (ABIN7043660, ABIN7044354 and ABIN7044355). In the rat hippocampal CA1 region, EAAT2 immunoreactivity (green) appears in the neuropil in the stratum oriens (S. Or) and in the pyramidal layer (Pyr) and was particularly intense around pyramidal neurons (arrow in A and compare with DAPI counterstain in B).



Immunocytochemistry

Image 3. Expression of EAAT2 in human U-87 MG cells - Cell surface detection of EAAT2 in live intact human U-87 MG glioblastoma cells. A. Extracellular staining of cells using Anti-EAAT2 (GLT-1) (extracellular) Antibody (ABIN7043660, ABIN7044354 and ABIN7044355), (1:100) followed by goat anti-rabbit-Alexa-Fluor-594 secondary antibody (red). B. Live image of the cells. C. Merge of A and B.

Please check the [product details page](#) for more images. Overall 4 images are available for ABIN7043660.