



Datasheet for ABIN7043665
anti-SLC1A4 antibody (C-Term, Intracellular)



[Go to Product page](#)

3 Images

Overview

Quantity:	25 µL
Target:	SLC1A4
Binding Specificity:	AA 500-512, C-Term, Intracellular
Reactivity:	Human, Mouse, Rat
Host:	Rabbit
Clonality:	Polyclonal
Conjugate:	This SLC1A4 antibody is un-conjugated
Application:	Western Blotting (WB), Immunohistochemistry (IHC), Immunofluorescence (IF)

Product Details

Immunogen:	Immunogen: Synthetic peptide Immunogen Sequence: (C)SKSEEETSPLVTH, corresponding to amino acid residues 500-512 of mouse SLC1A4
Isotype:	IgG
Characteristics:	Anti-ASCT1 (SLC1A4) Antibody (ABIN7043665, ABIN7044821 and ABIN7044822)) is a highly selective antibody directed against an epitope of the mouse protein. The antibody can be used in western blot analysis. It has been designed to recognize SLC1A4 from human, mouse, and rat samples.
Purification:	Affinity purified on immobilized antigen.

Target Details

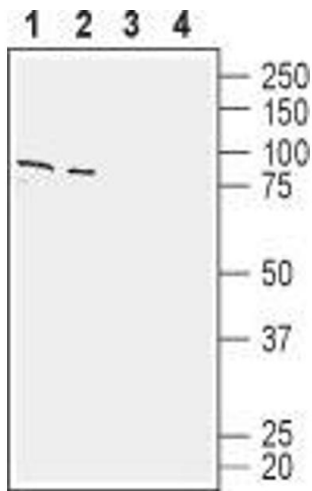
Target:	SLC1A4
Alternative Name:	ASCT1 (SLC1A4) (SLC1A4 Products)
Background:	Alternative names: ASCT1 (SLC1A4), Alanine/serine/cysteine/threonine transporter 1, Neutral amino acid transporter A, SATT
Gene ID:	55963
NCBI Accession:	NM_003038
UniProt:	O35874
Pathways:	Dicarboxylic Acid Transport

Application Details

Application Notes:	Optimal working dilution should be determined by the investigator.
Restrictions:	For Research Use only

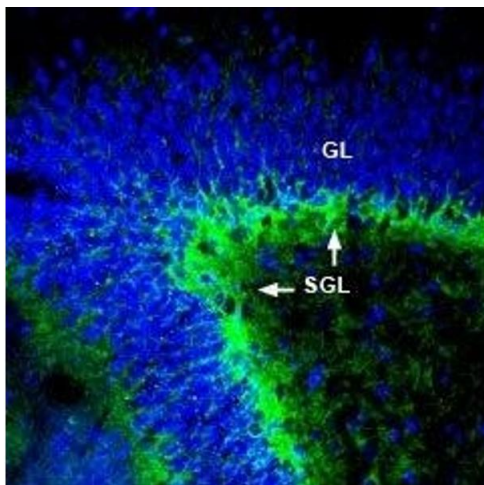
Handling

Format:	Lyophilized
Reconstitution:	25 µL, 50 µL or 0.2 mL double distilled water (DDW), depending on the sample size.
Concentration:	0.8 mg/mL
Buffer:	Reconstituted antibody contains phosphate buffered saline (PBS), pH 7.4, 1 % BSA, 0.05 % Sodium azide.
Preservative:	Sodium azide
Precaution of Use:	This product contains Sodium azide: a POISONOUS AND HAZARDOUS SUBSTANCE which should be handled by trained staff only.
Storage:	RT, 4 °C, -20 °C
Storage Comment:	Storage before reconstitution: The antibody ships as a lyophilized powder at room temperature. Upon arrival, it should be stored at -20°C. Storage after reconstitution: The reconstituted solution can be stored at 4°C for up to 1 week. For longer periods, small aliquots should be stored at -20°C. Avoid multiple freezing and thawing. Centrifuge all antibody preparations before use (10000 x g 5 min).



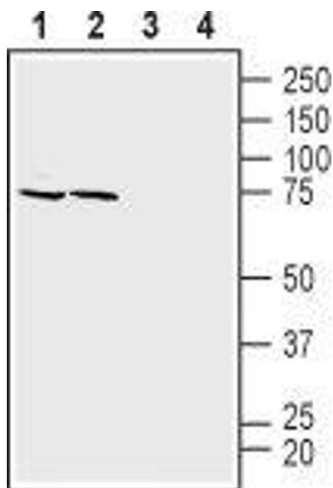
Western Blotting

Image 1. Western blot analysis of human Jurkat T-cell leukemia cell line lysate (lanes 1 and 3) and human Colo 205 colon adenocarcinoma cell line lysate (lanes 2 and 4): - 1,2. Anti-ASCT1 (SLC1A4) Antibody (ABIN7043665, ABIN7044821 and ABIN7044822), (1:200).3,4. Anti-ASCT1 (SLC1A4) Antibody, preincubated with ASCT1/SLC1A4 Blocking Peptide (#BLP-NT081).



Immunohistochemistry

Image 2. Expression of ASCT1 in rat hippocampus - Immunohistochemical staining of perfusion-fixed frozen rat brain sections with Anti-ASCT1 (SLC1A4) Antibody (ABIN7043665, ABIN7044821 and ABIN7044822), (1:300), followed by goat-anti-rabbit-AlexaFluor-488. ASCT1 staining (green) is detected in the sub-granular layer (SGL, arrows) of the dentate gyrus. GL = granule layer. Cell nuclei are stained with DAPI (blue).



Western Blotting

Image 3. Western blot analysis of mouse (lanes 1 and 3) and rat (lanes 2 and 4) brain membranes: - 1,2. Anti-ASCT1 (SLC1A4) Antibody (ABIN7043665, ABIN7044821 and ABIN7044822), (1:200).3,4. Anti-ASCT1 (SLC1A4) Antibody, preincubated with ASCT1/SLC1A4 Blocking Peptide (#BLP-NT081).