

Datasheet for ABIN7043667

anti-SLC1A1 antibody (C-Term, Intracellular)**3** Images[Go to Product page](#)

Overview

Quantity:	50 µL
Target:	SLC1A1
Binding Specificity:	C-Term, Intracellular
Reactivity:	Human, Rat, Mouse
Host:	Rabbit
Clonality:	Polyclonal
Conjugate:	This SLC1A1 antibody is un-conjugated
Application:	Western Blotting (WB), Immunohistochemistry (IHC), Immunocytochemistry (ICC), Immunofluorescence (IF)

Product Details

Immunogen:	Immunogen: Synthetic peptide Immunogen Sequence: (C)EPTILDNEDSDTKK, corresponding to amino acid residues 487-500 of rat EAAT3
Isotype:	IgG
Characteristics:	Anti-EAAT3 (EAAC1) Antibody (ABIN7043667 and ABIN7044356)) is a highly specific antibody directed against an epitope of the rat Excitatory amino acid transporter 3. The antibody can be used in western blot, immunohistochemistry, and immunocytochemistry applications. It has been designed to recognize EAAT3 from rat, mouse, and human samples.
Purification:	Affinity purified on immobilized antigen.

Target Details

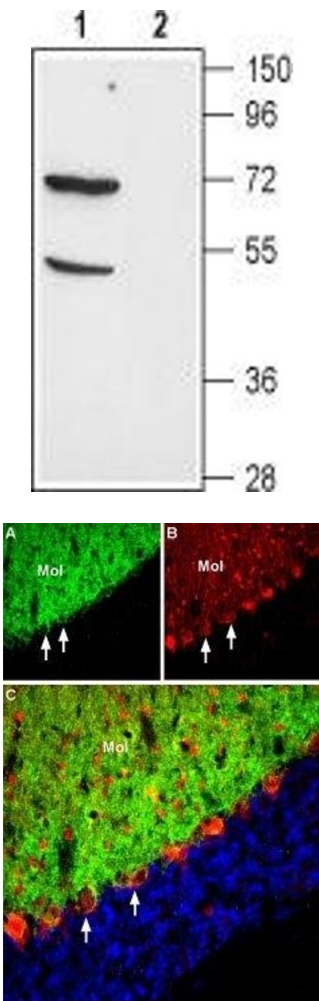
Target:	SLC1A1
Alternative Name:	EAAT3 (EAAC1) (SLC1A1 Products)
Background:	Alternative names: EAAT3 (EAAC1), Excitatory amino acid transporter 3, Excitatory amino-acid carrier 1, Sodium-dependent glutamate/aspartate transporter 3, SLC1A1
Gene ID:	25550
NCBI Accession:	NM_004170
UniProt:	P51907
Pathways:	Dicarboxylic Acid Transport

Application Details

Application Notes:	Optimal working dilution should be determined by the investigator.
Restrictions:	For Research Use only

Handling

Format:	Lyophilized
Reconstitution:	50 µL or 0.2 mL double distilled water (DDW), depending on the sample size.
Concentration:	0.8 mg/mL
Buffer:	Reconstituted antibody contains phosphate buffered saline (PBS), pH 7.4, 1 % BSA, 0.05 % Sodium azide.
Preservative:	Sodium azide
Precaution of Use:	This product contains Sodium azide: a POISONOUS AND HAZARDOUS SUBSTANCE which should be handled by trained staff only.
Storage:	RT, 4 °C, -20 °C
Storage Comment:	<p>Storage before reconstitution: The antibody ships as a lyophilized powder at room temperature. Upon arrival, it should be stored at -20°C.</p> <p>Storage after reconstitution: The reconstituted solution can be stored at 4°C for up to 1 week. For longer periods, small aliquots should be stored at -20°C. Avoid multiple freezing and thawing. Centrifuge all antibody preparations before use (10000 x g 5 min).</p>

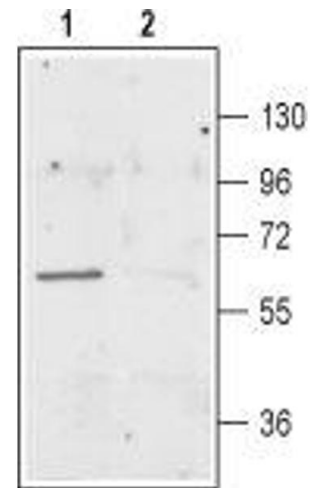


Western Blotting

Image 1. Western blot analysis of mouse kidney lysate: - 1. Anti-EAAT3 (EAAC1) Antibody (ABIN7043667 and ABIN7044356), (1:400). 2. Anti-EAAT3 (EAAC1) Antibody, preincubated with EAAT3/EAAC1 Blocking Peptide (#BLP-GC023).

Immunohistochemistry

Image 2. Expression of EAAT3 in rat cerebellum - Immunohistochemical staining of perfusion-fixed free-floating frozen rat brain sections with Anti-EAAT3 (EAAC1) Antibody (ABIN7043667 and ABIN7044356). A. EAAT3 staining (green) appears in the molecular layer (Mol) and around the soma of Purkinje cells (arrow). B. Parvalbumin (red), a marker of Purkinje and interneuronal cells, stains the same section. C. Merge of the images demonstrates expression of EAAT3 around the soma of Purkinje cells. DAPI is used as the counterstain.



Western Blotting

Image 3. Western blot analysis of rat brain membranes: - 1. Anti-EAAT3 (EAAC1) Antibody (ABIN7043667 and ABIN7044356), (1:400). 2. Anti-EAAT3 (EAAC1) Antibody, preincubated with EAAT3/EAAC1 Blocking Peptide (#BLP-GC023).