

Datasheet for ABIN7043669

anti-SLC1A5 antibody (2nd Extracellular Loop)



[Go to Product page](#)

2 Images

Overview

Quantity:	0.2 mL
Target:	SLC1A5
Binding Specificity:	2nd Extracellular Loop, AA 202-217
Reactivity:	Human
Host:	Rabbit
Clonality:	Polyclonal
Conjugate:	This SLC1A5 antibody is un-conjugated
Application:	Western Blotting (WB), Flow Cytometry (FACS)

Product Details

Immunogen:	<p>Immunogen: Synthetic peptide</p> <p>Immunogen Sequence: (C)RSYSTTYEERNITGTR, corresponding to amino acid residues 202 - 217 of human ASCT2</p>
Isotype:	IgG
Cross-Reactivity (Details):	The antibody will not recognize rat or mouse ASCT2.
Characteristics:	<p>Anti-Human ASCT2/SLC1A5 (extracellular) Antibody (ABIN7043669, ABIN7044825 and ABIN7044826)) is a highly specific antibody directed against an epitope of the human protein. The antibody can be used in western blot and live cell flow cytometry. It has been designed to recognize SLC1A5 from human samples only. The antibody will not recognize rat or mouse ASCT2.</p>
Purification:	Affinity purified on immobilized antigen.

Target Details

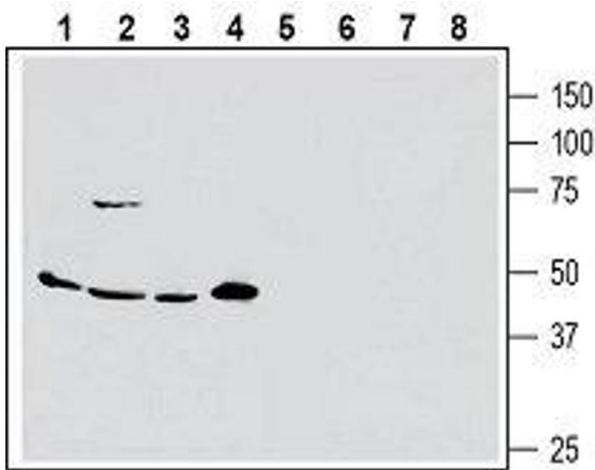
Target:	SLC1A5
Alternative Name:	ASCT2/SLC1A5 (SLC1A5 Products)
Background:	Alternative names: Alanine/Serine/Cysteine Transporter 2, Neutral amino acid transporter B(0), ATB(0), Sodium-dependent Neutral Amino Acid Transporter Type 2, ASCT2, SLC1A5
Gene ID:	6510
NCBI Accession:	NM_001145144
UniProt:	Q15758
Pathways:	Dicarboxylic Acid Transport , Warburg Effect

Application Details

Application Notes:	Optimal working dilution should be determined by the investigator.
Restrictions:	For Research Use only

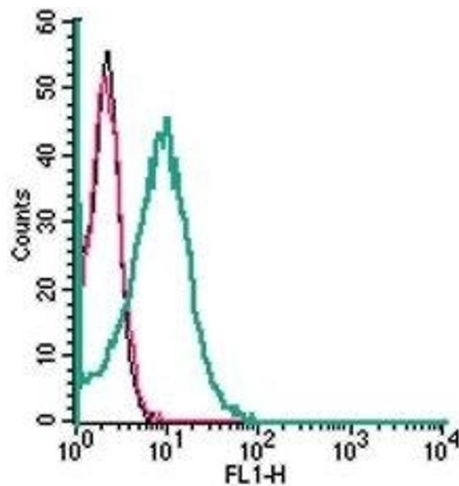
Handling

Format:	Lyophilized
Reconstitution:	25 µL, 50 µL or 0.2 mL double distilled water (DDW), depending on the sample size.
Concentration:	0.8 mg/mL
Buffer:	Reconstituted antibody contains phosphate buffered saline (PBS), pH 7.4, 1 % BSA, 0.05 % Sodium azide.
Preservative:	Sodium azide
Precaution of Use:	This product contains Sodium azide: a POISONOUS AND HAZARDOUS SUBSTANCE which should be handled by trained staff only.
Storage:	RT, 4 °C, -20 °C
Storage Comment:	Storage before reconstitution: The antibody ships as a lyophilized powder at room temperature. Upon arrival, it should be stored at -20°C. Storage after reconstitution: The reconstituted solution can be stored at 4°C for up to 1 week. For longer periods, small aliquots should be stored at -20°C. Avoid multiple freezing and thawing. Centrifuge all antibody preparations before use (10000 x g 5 min).



Western Blotting

Image 1. Western blot analysis of human MCF-7 breast adenocarcinoma (lanes 1 and 5), human Colo-205 colorectal adenocarcinoma (lanes 2 and 6), human PANC-1 pancreas ductal adenocarcinoma (lanes 3 and 7) and human Malme-3M melanoma cell line lysate (lanes 4 and 8):
 - 1-4. Anti-Human ASCT2/SLC1A5 (extracellular) Antibody (ABIN7043669, ABIN7044825 and ABIN7044826), (1:200)
 5-8. Anti-Human ASCT2/SLC1A5 (extracellular) Antibody, preincubated with Human ASCT2/SLC1A5 (extracellular) Blocking Peptide (#BLP-NT083) (#BLP-NT083).



Flow Cytometry

Image 2. Cell surface detection of ASCT2 in live intact human HL-60 promyelocytic leukemia cells: (black line) Cells.(red line) Cells + goat-anti-rabbit-FITC.(green line) Cells + Anti-Human ASCT2/SLC1A5 (extracellular) Antibody (ABIN7043669, ABIN7044825 and ABIN7044826), (2.5 µg) + goat-anti-rabbit-FITC.