

Datasheet for ABIN7043670

anti-SLC11A1 antibody (4th Extracellular Loop)

3 Images

[Go to Product page](#)

Overview

Quantity:	0.2 mL
Target:	SLC11A1
Binding Specificity:	4th Extracellular Loop, AA 322-335
Reactivity:	Human, Rat, Mouse
Host:	Rabbit
Clonality:	Polyclonal
Conjugate:	This SLC11A1 antibody is un-conjugated
Application:	Western Blotting (WB), Flow Cytometry (FACS)

Product Details

Immunogen:	Immunogen: Synthetic peptide Immunogen Sequence: CANSSLHDYAKIFP(R), corresponding to amino acid residues 322-335 of human SLC11A1
Isotype:	IgG
Characteristics:	Anti-SLC11A1/NRAMP1 (extracellular) Antibody (ABIN7043670, ABIN7044865 and ABIN7044866)) is a highly specific antibody directed against an epitope of the human protein. The antibody can be used in western blot and indirect live cell flow cytometry applications. It has been designed to recognize NRAMP1 from rat, mouse, and human samples.
Purification:	Affinity purified on immobilized antigen.

Target Details

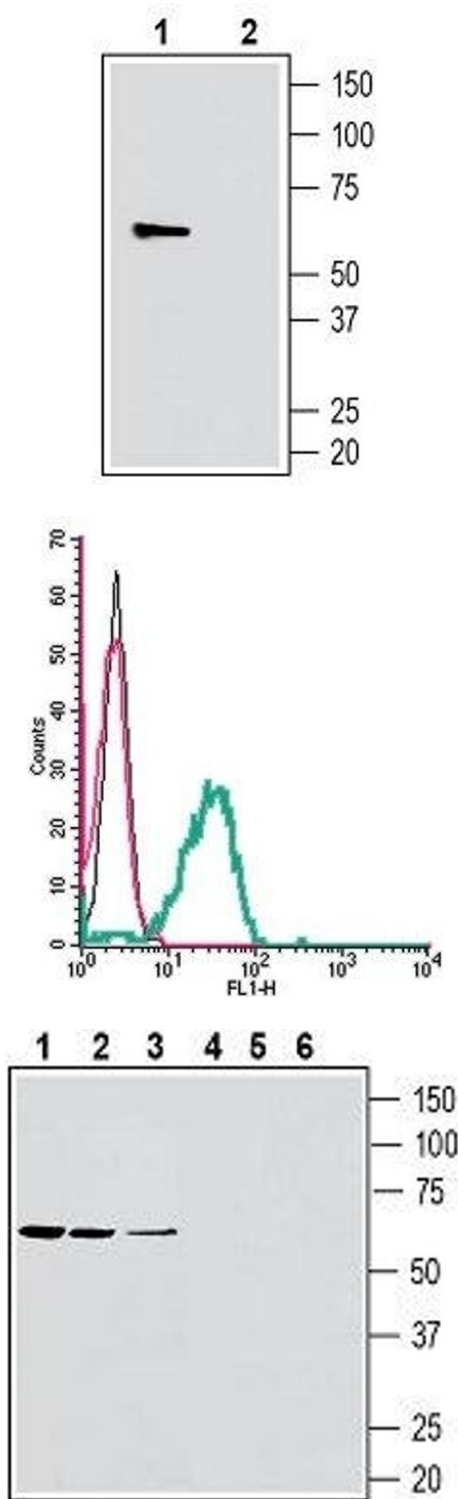
Target:	SLC11A1
Alternative Name:	SLC11A1/NRAMP1 (SLC11A1 Products)
Background:	Alternative names: Natural Resistance-Associated Macrophage Protein 1, LSH, Solute Carrier Family 11 Member 1, SLC11A1
Gene ID:	6556
NCBI Accession:	NM_000578
UniProt:	P49279
Pathways:	Transition Metal Ion Homeostasis , Production of Molecular Mediator of Immune Response , Protein targeting to Nucleus

Application Details

Application Notes:	Optimal working dilution should be determined by the investigator.
Restrictions:	For Research Use only

Handling

Format:	Lyophilized
Reconstitution:	25 µL, 50 µL or 0.2 mL double distilled water (DDW), depending on the sample size.
Concentration:	0.8 mg/mL
Buffer:	Reconstituted antibody contains phosphate buffered saline (PBS), pH 7.4, 1 % BSA, 0.05 % Sodium azide.
Preservative:	Sodium azide
Precaution of Use:	This product contains Sodium azide: a POISONOUS AND HAZARDOUS SUBSTANCE which should be handled by trained staff only.
Storage:	RT, 4 °C, -20 °C
Storage Comment:	<p>Storage before reconstitution: The antibody ships as a lyophilized powder at room temperature. Upon arrival, it should be stored at -20°C.</p> <p>Storage after reconstitution: The reconstituted solution can be stored at 4°C for up to 1 week. For longer periods, small aliquots should be stored at -20°C. Avoid multiple freezing and thawing. Centrifuge all antibody preparations before use (10000 x g 5 min).</p>



Western Blotting

Image 1. Western blot analysis of human THP-1 monocytic leukemia cells: - 1. Anti-SLC11A1/NRAMP1 (extracellular) Antibody (ABIN7043670, ABIN7044865 and ABIN7044866), (1:200) 2. Anti-SLC11A1/NRAMP1 (extracellular) Antibody, preincubated with SLC11A1/NRAMP1 (extracellular) Blocking Peptide (#BLP-NT201) (#BLP-NT201).

Flow Cytometry

Image 2. Cell surface detection of SLC11A1 in live intact human THP-1 monocytic leukemia cells: (black line) Cells.(red line) Cells + goat-anti-rabbit-FITC.(green line) Cells + Anti-SLC11A1/NRAMP1 (extracellular) Antibody (ABIN7043670, ABIN7044865 and ABIN7044866), (5 µg) + goat-anti-rabbit-FITC.

Western Blotting

Image 3. Western blot analysis of rat spleen lysates (lanes 1 and 4), rat lung membranes (lanes 2 and 4) and mouse lung membranes (lanes 3 and 6): - 1-3. Anti-SLC11A1/NRAMP1 (extracellular) Antibody (ABIN7043670, ABIN7044865 and ABIN7044866), (1:200). 4-6. Anti-SLC11A1/NRAMP1 (extracellular) Antibody, preincubated with SLC11A1/NRAMP1 (extracellular) Blocking Peptide (#BLP-NT201) (#BLP-NT201).