



Datasheet for ABIN7043671

anti-SLC12A2 antibody (6th Extracellular Loop)



[Go to Product page](#)

3 Images

Overview

Quantity:	25 µL
Target:	SLC12A2
Binding Specificity:	6th Extracellular Loop, AA 828-841
Reactivity:	Human, Rat, Mouse
Host:	Rabbit
Clonality:	Polyclonal
Conjugate:	This SLC12A2 antibody is un-conjugated
Application:	Western Blotting (WB), Immunohistochemistry (IHC), Immunofluorescence (IF), Immunocytochemistry (ICC), Live Cell Imaging (LCI)

Product Details

Immunogen:	Immunogen: Synthetic peptide Immunogen Sequence: (C)RRQAMKEMSIDQAK, corresponding to amino acid residues 828-841 of human NKCC1
Isotype:	IgG
Characteristics:	Anti-NKCC1 (SLC12A2) (extracellular) Antibody (ABIN7043671, ABIN7044813 and ABIN7044814) is a highly specific antibody directed against an epitope of the human protein. The antibody can be used in western blot, immunohistochemistry, live cell imaging, and immunocytochemistry applications. It has been designed to recognize NKCC1 from rat, mouse, and human samples.
Purification:	Affinity purified on immobilized antigen.

Target Details

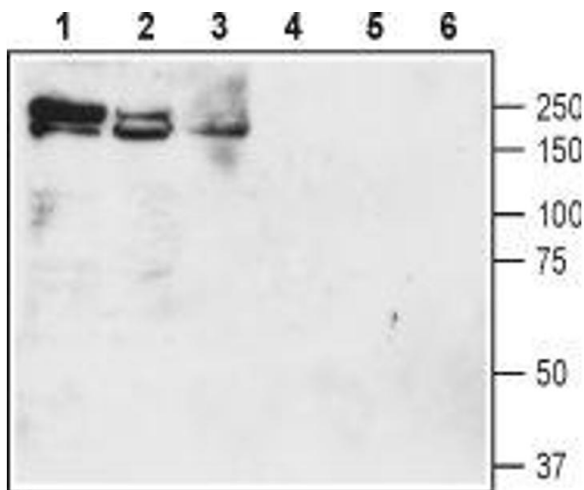
Target:	SLC12A2
Alternative Name:	NKCC1 (SLC12A2) (SLC12A2 Products)
Background:	Alternative names: NKCC1 (SLC12A2), Na ⁺ -K ⁺ -2Cl ⁻ Cotransporter 1, Basolateral Na-K-Cl symporter, Bumetanide-sensitive sodium-(potassium)-chloride cotransporter 1, BSC2, Solute carrier family 12 member 2
Gene ID:	6558
NCBI Accession:	NM_001046
UniProt:	P55011
Pathways:	Sensory Perception of Sound

Application Details

Application Notes:	Optimal working dilution should be determined by the investigator.
Restrictions:	For Research Use only

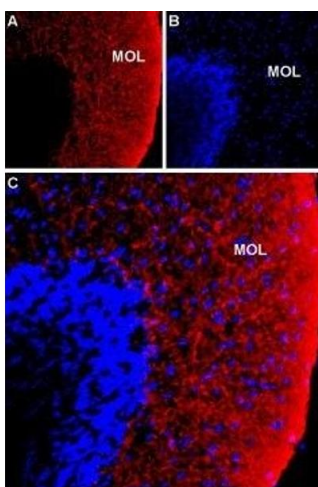
Handling

Format:	Lyophilized
Reconstitution:	25 µL, 50 µL or 0.2 mL double distilled water (DDW), depending on the sample size.
Concentration:	0.6 mg/mL
Buffer:	Reconstituted antibody contains phosphate buffered saline (PBS), pH 7.4, 1 % BSA, 0.05 % Sodium azide.
Preservative:	Sodium azide
Precaution of Use:	This product contains Sodium azide: a POISONOUS AND HAZARDOUS SUBSTANCE which should be handled by trained staff only.
Storage:	RT, 4 °C, -20 °C
Storage Comment:	Storage before reconstitution: The antibody ships as a lyophilized powder at room temperature. Upon arrival, it should be stored at -20°C. Storage after reconstitution: The reconstituted solution can be stored at 4°C for up to 1 week. For longer periods, small aliquots should be stored at -20°C. Avoid multiple freezing and thawing. Centrifuge all antibody preparations before use (10000 x g 5 min).



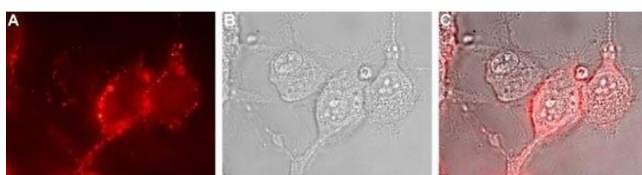
Western Blotting

Image 1. Western blot analysis of rat brain membranes (lanes 1 and 4), mouse brain membranes (lanes 2 and 5) and rat lung lysate (lanes 3 and 6): - 1-3. Anti-NKCC1 (SLC12A2) (extracellular) Antibody (ABIN7043671, ABIN7044813 and ABIN7044814), (1:200).4-6. Anti-NKCC1 (SLC12A2) (extracellular) Antibody, preincubated with NKCC1/SLC12A2 (extracellular) Blocking Peptide (#BLP-NT071).



Immunohistochemistry

Image 2. Expression of NKCC1 in rat cerebellum - Immunohistochemical staining of immersion-fixed, free floating rat brain frozen sections using Anti-NKCC1 (SLC12A2) (extracellular) Antibody (ABIN7043671, ABIN7044813 and ABIN7044814), (1:100). A. NKCC1 staining (red) is detected in the cerebellar molecular layer (Mol). B. DAPI counterstain (blue) reveals the outline of cerebellar layers. C. Merge of the two images.



Immunocytochemistry

Image 3. Expression of NKCC1 in human U-87 MG cells - Cell surface detection of NKCC1 in live intact human U-87 MG glioblastoma cells. A. Extracellular staining of cells with Anti-NKCC1 (SLC12A2) (extracellular) Antibody (ABIN7043671, ABIN7044813 and ABIN7044814), (1:50), followed by goat anti-rabbit-AlexaFluor-594 secondary antibody (red). B. Live view of the cells. C. Merge of the two pictures.