

Datasheet for ABIN7043672

**anti-SLC12A4 antibody (C-Term, Intracellular)****1** Image[Go to Product page](#)

## Overview

Quantity:	25 µL
Target:	SLC12A4
Binding Specificity:	AA 998-1010, C-Term, Intracellular
Reactivity:	Human, Rat, Mouse
Host:	Rabbit
Clonality:	Polyclonal
Conjugate:	This SLC12A4 antibody is un-conjugated
Application:	Western Blotting (WB)

## Product Details

Immunogen:	Immunogen: Synthetic peptide Immunogen Sequence: (C)HAPDNFRELVHIK, corresponding to amino acid residues 998-1010 of rat KCC1
Isotype:	IgG
Cross-Reactivity (Details):	Several splice variants of the KCC1 human gene have been identified. This antibody will recognize all known variants except for isoform 4. For more information go to human KCC1 (Accession Q9UP95).
Characteristics:	Anti-KCC1 (SLC12A4) Antibody is directed against epitope of rat KCC1. Anti-KCC1 (SLC12A4) Antibody (ABIN7043672, ABIN7044550 and ABIN7044551)) can be used in western blot analysis. It has been designed to recognize KCC1 from rat, mouse and human samples. Several splice variants of the KCC1 human gene have been identified. This antibody will recognize all

## Product Details

known variants except for isoform 4. For more information go to human KCC1 (Accession Q9UP95).

Purification: Affinity purified on immobilized antigen.

## Target Details

Target: SLC12A4

Alternative Name: KCC1 (SLC12A4) ([SLC12A4 Products](#))

Background: Alternative names: KCC1 (SLC12A4), Erythroid K<sup>+</sup>-Cl<sup>-</sup> cotransporter 1, Electroneutral potassium-chloride cotransporter 1

Gene ID: 29501

NCBI Accession: [NM\\_005072](#)

UniProt: [Q63632](#)

## Application Details

Application Notes: Optimal working dilution should be determined by the investigator.

Restrictions: For Research Use only

## Handling

Format: Lyophilized

Reconstitution: 25 µL, 50 µL or 0.2 mL double distilled water (DDW), depending on the sample size.

Concentration: 0.8 mg/mL

Buffer: Reconstituted antibody contains phosphate buffered saline (PBS), pH 7.4, 1 % BSA, 0.05 % Sodium azide.

Preservative: Sodium azide

Precaution of Use: This product contains Sodium azide: a POISONOUS AND HAZARDOUS SUBSTANCE which should be handled by trained staff only.

Storage: RT, 4 °C, -20 °C

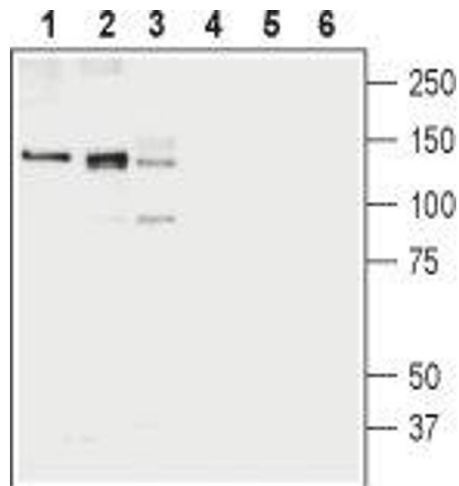
Storage Comment: Storage before reconstitution: The antibody ships as a lyophilized powder at room temperature. Upon arrival, it should be stored at -20°C.

Storage after reconstitution: The reconstituted solution can be stored at 4°C for up to 1 week.

## Handling

For longer periods, small aliquots should be stored at -20°C. Avoid multiple freezing and thawing. Centrifuge all antibody preparations before use (10000 x g 5 min).

## Images



### Western Blotting

**Image 1.** Western blot analysis of rat brain membranes (lanes 1 and 4), mouse brain membranes (lanes 2 and 5) and human K562 erythroleukemia cell lysates (lanes 3 and 6): - 1-3. Anti-KCC1 (SLC12A4) Antibody (ABIN7043672, ABIN7044550 and ABIN7044551), (1:200). 4-6. Anti-KCC1 (SLC12A4) Antibody, preincubated with KCC1/SLC12A4 Blocking Peptide (#BLP-KT001).