



[Go to Product page](#)

Datasheet for ABIN7043673

anti-KCC2 antibody (C-Term, Intracellular)

3 Images

Overview

Quantity:	50 µL
Target:	KCC2 (SLC12A5)
Binding Specificity:	AA 967-980, C-Term, Intracellular
Reactivity:	Human, Rat, Mouse
Host:	Rabbit
Clonality:	Polyclonal
Conjugate:	This KCC2 antibody is un-conjugated
Application:	Western Blotting (WB), Immunohistochemistry (IHC), Immunofluorescence (IF)

Product Details

Immunogen:	Immunogen: Synthetic peptide Immunogen Sequence: (C)KNPANTRLRLNVPE, corresponding to amino acid residues 967-980 of rat KCC2
Isotype:	IgG
Characteristics:	Anti-KCC2 (SLC12A5) Antibody (ABIN7043673, ABIN7044552 and ABIN7044553)) is a highly specific antibody directed against an epitope of the rat protein. The antibody can be used in western blot and immunohistochemistry applications. It has been designed to recognize KCC2 from human, rat, and mouse samples.
Purification:	Affinity purified on immobilized antigen.

Target Details

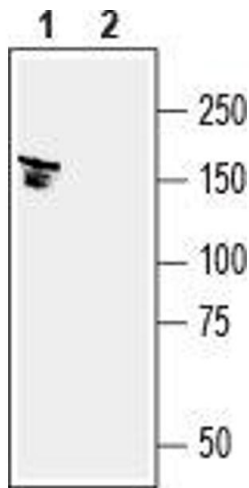
Target:	KCC2 (SLC12A5)
Alternative Name:	KCC2 (SLC12A5) (SLC12A5 Products)
Background:	Alternative names: KCC2 (SLC12A5), K ⁺ -Cl ⁻ cotransporter 2, Electroneutral potassium-chloride cotransporter 2, Neuronal K-Cl cotransporter, Solute carrier family 12 member 5
Gene ID:	171373
NCBI Accession:	NM_001134771
UniProt:	Q63633

Application Details

Application Notes:	Optimal working dilution should be determined by the investigator.
Restrictions:	For Research Use only

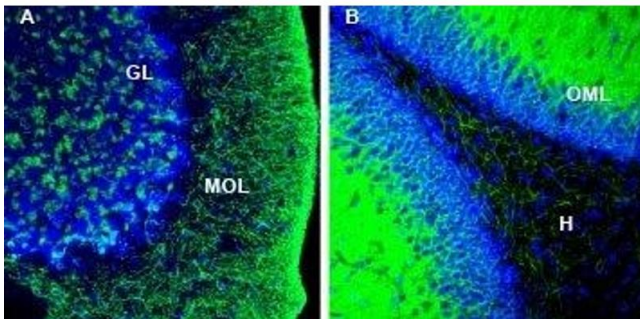
Handling

Format:	Lyophilized
Reconstitution:	25 µL, 50 µL or 0.2 mL double distilled water (DDW), depending on the sample size.
Concentration:	0.8 mg/mL
Buffer:	Reconstituted antibody contains phosphate buffered saline (PBS), pH 7.4, 1 % BSA, 0.05 % Sodium azide.
Preservative:	Sodium azide
Precaution of Use:	This product contains Sodium azide: a POISONOUS AND HAZARDOUS SUBSTANCE which should be handled by trained staff only.
Storage:	RT, 4 °C, -20 °C
Storage Comment:	Storage before reconstitution: The antibody ships as a lyophilized powder at room temperature. Upon arrival, it should be stored at -20°C. Storage after reconstitution: The reconstituted solution can be stored at 4°C for up to 1 week. For longer periods, small aliquots should be stored at -20°C. Avoid multiple freezing and thawing. Centrifuge all antibody preparations before use (10000 x g 5 min).



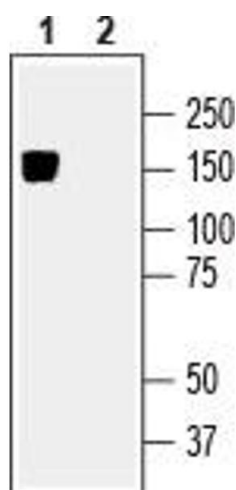
Western Blotting

Image 1. Western blot analysis of mouse brain lysates: - 1. Anti-KCC2 (SLC12A5) Antibody (ABIN7043673, ABIN7044552 and ABIN7044553), (1:200). 2. Anti-KCC2 (SLC12A5) Antibody, preincubated with KCC2/SLC12A5 Blocking Peptide (#BLP-KT005).



Immunohistochemistry

Image 2. Expression of KCC2 in rat cerebellum and hippocampus. - Immunohistochemical staining of perfusion-fixed frozen rat brain sections with Anti-KCC2 (SLC12A5) Antibody (ABIN7043673, ABIN7044552 and ABIN7044553), (1:1000), followed by goat anti-rabbit-AlexaFluor-488. A. KCC2 immunoreactivity in the cerebellum (green) is detected in the granule layer (GL) and molecular layer (MOL). B. KCC2 staining in the hippocampal dentate gyrus region (green) is observed in the outer molecular layer (OML) and the hilus (H). Cell nuclei are stained with DAPI (blue).



Western Blotting

Image 3. Western blot analysis of rat brain membranes: - 1. Anti-KCC2 (SLC12A5) Antibody (ABIN7043673, ABIN7044552 and ABIN7044553), (1:500). 2. Anti-KCC2 (SLC12A5) Antibody, preincubated with KCC2/SLC12A5 Blocking Peptide (#BLP-KT005).