



[Go to Product page](#)

Datasheet for ABIN7043675

## anti-SLC16A3 antibody (C-Term, Intracellular)

### 2 Images

#### Overview

Quantity:	50 µL
Target:	SLC16A3
Binding Specificity:	AA 447-459, C-Term, Intracellular
Reactivity:	Human, Mouse, Rat
Host:	Rabbit
Clonality:	Polyclonal
Conjugate:	This SLC16A3 antibody is un-conjugated
Application:	Western Blotting (WB)

#### Product Details

Immunogen:	Immunogen: Synthetic peptide Immunogen Sequence: (C)REVEHFLKAEPEK, corresponding to amino acid residues 447-459 of rat MCT4
Isotype:	IgG
Characteristics:	Anti-MCT4 (SLC16A3) Antibody (ABIN7043675, ABIN7044618 and ABIN7044619)) is a highly specific antibody directed against an epitope of the rat Monocarboxylate transporter 4. The antibody can be used in western blot analysis. It has been designed to recognize MCT4 from human, rat, and mouse samples.
Purification:	Affinity purified on immobilized antigen.

## Target Details

---

Target:	SLC16A3
Alternative Name:	MCT4 (SLC16A3) ( <a href="#">SLC16A3 Products</a> )
Background:	Alternative names: MCT4 (SLC16A3), Monocarboxylate transporter 4, Monocarboxylic acid transporter 4, MOT4
Gene ID:	80878
NCBI Accession:	<a href="#">NM_004207</a>
UniProt:	<a href="#">O35910</a>
Pathways:	<a href="#">Warburg Effect</a>

## Application Details

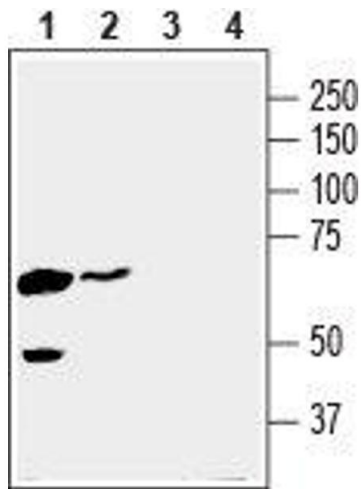
---

Application Notes:	Optimal working dilution should be determined by the investigator.
Restrictions:	For Research Use only

## Handling

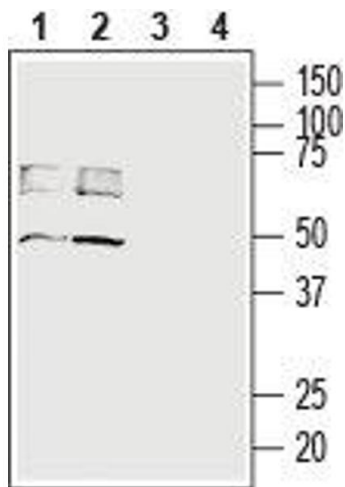
---

Format:	Lyophilized
Reconstitution:	25 µL, 50 µL or 0.2 mL double distilled water (DDW), depending on the sample size.
Concentration:	0.8 mg/mL
Buffer:	Reconstituted antibody contains phosphate buffered saline (PBS), pH 7.4, 1 % BSA, 0.05 % Sodium azide.
Preservative:	Sodium azide
Precaution of Use:	This product contains Sodium azide: a POISONOUS AND HAZARDOUS SUBSTANCE which should be handled by trained staff only.
Storage:	RT, 4 °C, -20 °C
Storage Comment:	Storage before reconstitution: The antibody ships as a lyophilized powder at room temperature. Upon arrival, it should be stored at -20°C. Storage after reconstitution: The reconstituted solution can be stored at 4°C for up to 1 week. For longer periods, small aliquots should be stored at -20°C. Avoid multiple freezing and thawing. Centrifuge all antibody preparations before use (10000 x g 5 min).



#### Western Blotting

**Image 1.** Western blot analysis of human K562 chronic myelogenous leukemia cell line lysate (lanes 1 and 3) and human MDA-MB-231 breast adenocarcinoma cell line lysate (lanes 2 and 4): - 1,2. Anti-MCT4 (SLC16A3) Antibody (ABIN7043675, ABIN7044618 and ABIN7044619), (1:200).3,4. Anti-MCT4 (SLC16A3) Antibody, preincubated with MCT4/SLC16A3 Blocking Peptide (#BLP-MT014).



#### Western Blotting

**Image 2.** Western blot analysis of rat (lanes 1 and 3) and mouse (lanes 2 and 4) brain lysates: - 1,2. Anti-MCT4 (SLC16A3) Antibody (ABIN7043675, ABIN7044618 and ABIN7044619), (1:200).3,4. Anti-MCT4 (SLC16A3) Antibody, preincubated with MCT4/SLC16A3 Blocking Peptide (#BLP-MT014).