

Datasheet for ABIN7043678

anti-SLC16A7 antibody (C-Term, Intracellular)**3** Images[Go to Product page](#)

Overview

Quantity:	25 µL
Target:	SLC16A7
Binding Specificity:	AA 456-468, C-Term, Intracellular
Reactivity:	Rat, Mouse
Host:	Rabbit
Clonality:	Polyclonal
Conjugate:	This SLC16A7 antibody is un-conjugated
Application:	Western Blotting (WB), Immunohistochemistry (IHC), Immunofluorescence (IF)

Product Details

Immunogen:	Immunogen: Synthetic peptide Immunogen Sequence: (C)KEMEALSRSKQDD, corresponding to amino acid residues 456-468 of rat MCT2
Isotype:	IgG
Cross-Reactivity (Details):	Not recommended for human samples.
Characteristics:	Anti-MCT2 Antibody (ABIN7043678, ABIN7044616 and ABIN7044617)) is a highly specific antibody directed against an epitope of the rat Monocarboxylate transporter 2. The antibody can be used in western blot and immunohistochemistry applications. It has been designed to recognize MCT2 from rat and mouse samples. The antibody is unlikely to recognize the protein from human samples.
Purification:	Affinity purified on immobilized antigen.

Target Details

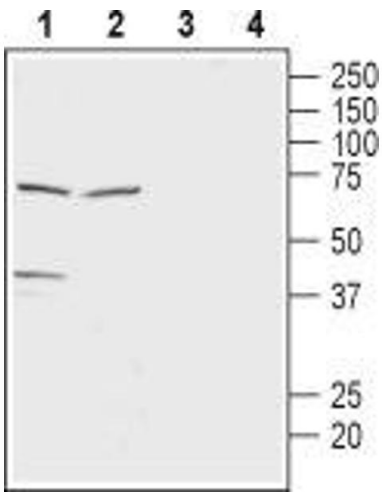
Target:	SLC16A7
Alternative Name:	MCT2 (SLC16A7 Products)
Background:	Alternative names: MCT2, Monocarboxylate transporter 2, Monocarboxylic acid transporter 2, SLC16A7
Gene ID:	29735
NCBI Accession:	NM_004731
UniProt:	Q63344

Application Details

Application Notes:	Optimal working dilution should be determined by the investigator.
Restrictions:	For Research Use only

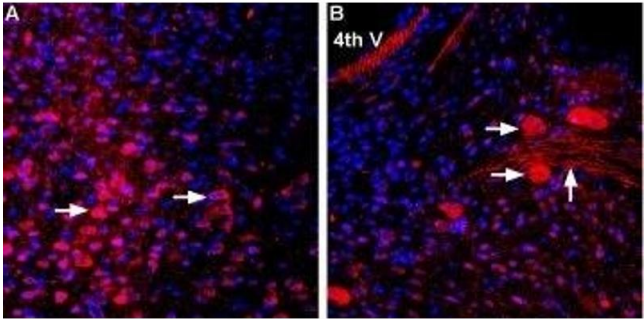
Handling

Format:	Lyophilized
Reconstitution:	25 µL, 50 µL or 0.2 mL double distilled water (DDW), depending on the sample size.
Concentration:	0.8 mg/mL
Buffer:	Reconstituted antibody contains phosphate buffered saline (PBS), pH 7.4, 1 % BSA, 0.05 % Sodium azide.
Preservative:	Sodium azide
Precaution of Use:	This product contains Sodium azide: a POISONOUS AND HAZARDOUS SUBSTANCE which should be handled by trained staff only.
Storage:	RT, 4 °C, -20 °C
Storage Comment:	<p>Storage before reconstitution: The antibody ships as a lyophilized powder at room temperature. Upon arrival, it should be stored at -20°C.</p> <p>Storage after reconstitution: The reconstituted solution can be stored at 4°C for up to 1 week. For longer periods, small aliquots should be stored at -20°C. Avoid multiple freezing and thawing. Centrifuge all antibody preparations before use (10000 x g 5 min).</p>



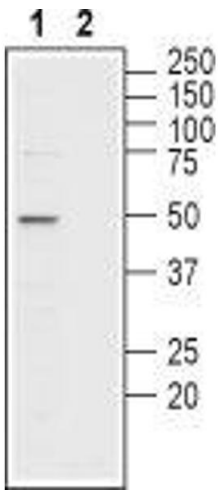
Western Blotting

Image 1. Western blot analysis of rat brain lysate (lanes 1 and 3) and rat testis membranes (lanes 2 and 4): - 1,2. Anti-MCT2 Antibody (ABIN7043678, ABIN7044616 and ABIN7044617), (1:200).3,4. Anti-MCT2 Antibody, preincubated with MCT2 Blocking Peptide (#BLP-MT012).



Immunohistochemistry

Image 2. Expression of MCT2 in mouse brain sections - Immunohistochemical staining of perfusion-fixed frozen mouse brain sections using Anti-MCT2 Antibody (ABIN7043678, ABIN7044616 and ABIN7044617), (1:1000). A. MCT2 staining in mouse cortex sections (red) appears in neuronal outlines (arrows). B. MCT2 staining in dorsal pons brain stem regions (red) appears in neuronal outlines (horizontal arrows) and in fibers (vertical arrows). 4th V = fourth ventricle. Cell nuclei are stained with DAPI (blue).



Western Blotting

Image 3. Western blot analysis of mouse testis membranes: - 1. Anti-MCT2 Antibody (ABIN7043678, ABIN7044616 and ABIN7044617), (1:200).2. Anti-MCT2 Antibody, preincubated with MCT2 Blocking Peptide (#BLP-MT012).