

Datasheet for ABIN7043690

**anti-SLC19A1 antibody (6th Cytoplasmic Loop)****4** Images[Go to Product page](#)

## Overview

Quantity:	0.2 mL
Target:	SLC19A1
Binding Specificity:	6th Cytoplasmic Loop, AA 412-426
Reactivity:	Human, Mouse, Rat
Host:	Rabbit
Clonality:	Polyclonal
Conjugate:	This SLC19A1 antibody is un-conjugated
Application:	Western Blotting (WB), Immunohistochemistry (IHC), Flow Cytometry (FACS)

## Product Details

Immunogen:	Immunogen: Synthetic peptide
	Immunogen Sequence: (C)SDKRGLGLQVRDQFR, corresponding to amino acid residues 412 - 426 of mouse SLC19A1
Isotype:	IgG
Characteristics:	Anti-SLC19A1/RFC1 (extracellular) Antibody (ABIN7043690, ABIN7044293 and ABIN7044294)) is a highly specific antibody directed against an epitope of the mouse protein. The antibody can be used in western blot and live cell flow cytometry applications. It has been designed to recognize SLC19A1 from human, rat, and mouse samples.
Purification:	Affinity purified on immobilized antigen.

## Target Details

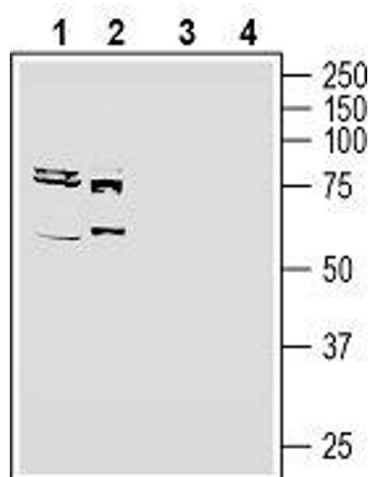
Target:	SLC19A1
Alternative Name:	SLC19A1/RFC1 ( <a href="#">SLC19A1 Products</a> )
Background:	Alternative names: Solute Carrier Family 19 Member 1, Reduced Folate Carrier 1, Reduced Folate Transporter 1, RFT1, Intestinal folate carrier 1, IFC-1, Reduced Folate Transporter, CHMD, FOLT, REFC, RFC, RFT-1
Gene ID:	42746
NCBI Accession:	<a href="#">NM_001205206</a>
UniProt:	<a href="#">P41440</a>
Pathways:	<a href="#">Dicarboxylic Acid Transport</a>

## Application Details

Application Notes:	Optimal working dilution should be determined by the investigator.
Restrictions:	For Research Use only

## Handling

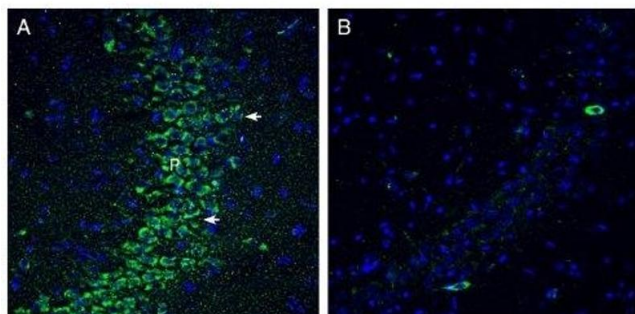
Format:	Lyophilized
Reconstitution:	25 µL, 50 µL or 0.2 mL double distilled water (DDW), depending on the sample size.
Concentration:	0.8 mg/mL
Buffer:	Reconstituted antibody contains phosphate buffered saline (PBS), pH 7.4, 1 % BSA, 0.05 % Sodium azide.
Preservative:	Sodium azide
Precaution of Use:	This product contains Sodium azide: a POISONOUS AND HAZARDOUS SUBSTANCE which should be handled by trained staff only.
Storage:	RT, 4 °C, -20 °C
Storage Comment:	<p>Storage before reconstitution: The antibody ships as a lyophilized powder at room temperature. Upon arrival, it should be stored at -20°C.</p> <p>Storage after reconstitution: The reconstituted solution can be stored at 4°C for up to 1 week. For longer periods, small aliquots should be stored at -20°C. Avoid multiple freezing and thawing. Centrifuge all antibody preparations before use (10000 x g 5 min).</p>



### Western Blotting

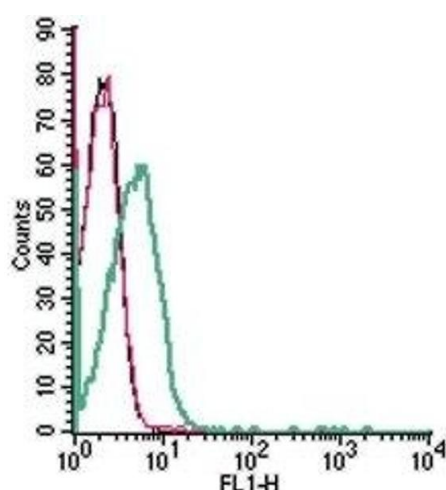
**Image 1.** Western blot analysis of human MCF-7 breast adenocarcinoma cell line lysate (lanes 1 and 3) and human K562 myelogenous leukemia cell line lysate (lanes 2 and 4):

- 1, 2. Anti-SLC19A1/RFC1 (extracellular) Antibody (ABIN7043690, ABIN7044293 and ABIN7044294), (1:400).
- 3, 4. Anti-SLC19A1/RFC1 (extracellular) Antibody, preincubated with SLC19A1/RFC1 (extracellular) Blocking Peptide (#BLP-FT001).



### Immunohistochemistry

**Image 2.** Expression of SLC19A1 in rat hippocampus. - Immunohistochemical staining of perfusion-fixed frozen rat brain sections with Anti-SLC19A1/RFC1 (extracellular) Antibody (ABIN7043690, ABIN7044293 and ABIN7044294), (1:1200), followed by goat anti-rabbit-AlexaFluor-488. A. Staining in the rat hippocampal CA3 region, showed immunoreactivity (green) in neuronal profiles in the pyramidal layer (arrows). B. Pre-incubation of the antibody with SLC19A1/RFC1 (extracellular) Blocking Peptide (BLP-FT001), suppressed staining. Cell nuclei are stained with DAPI (blue). P = pyramidal layer.



### Flow Cytometry

**Image 3.** Cell surface detection of SLC19A1 in live intact human Jurkat T-cell leukemia cells: (black line) Cells.(red line) Cells + goat-anti-rabbit-FITC.(green line) Cells + Anti-SLC19A1/RFC1 (extracellular) Antibody (ABIN7043690, ABIN7044293 and ABIN7044294), (5 µg) + goat-anti-rabbit-FITC.

Please check the [product details page](#) for more images. Overall 4 images are available for ABIN7043690.