

Datasheet for ABIN7043692
anti-GLUT1 antibody (1st Extracellular Loop)



[Go to Product page](#)

3 Images

Overview

Quantity:	50 µL
Target:	GLUT1 (SLC2A1)
Binding Specificity:	1st Extracellular Loop, AA 41-55
Reactivity:	Human, Mouse, Rat
Host:	Rabbit
Clonality:	Polyclonal
Conjugate:	This GLUT1 antibody is un-conjugated
Application:	Western Blotting (WB), Flow Cytometry (FACS)

Product Details

Immunogen:	Immunogen: Synthetic peptide Immunogen Sequence: (C)EEFYNQTNHRYGES, corresponding to amino acid residues 41-55 of rat Glucose transporter 1
Isotype:	IgG
Characteristics:	Anti-GLUT1 (extracellular) Antibody (ABIN7043692, ABIN7044497 and ABIN7044498)) is a highly specific antibody directed against an epitope of the rat protein. The antibody can be used in western blot and indirect live cell flow cytometry applications. It has been designed to recognize GLUT1 from human, rat, and mouse samples.
Purification:	Affinity purified on immobilized antigen.

Target Details

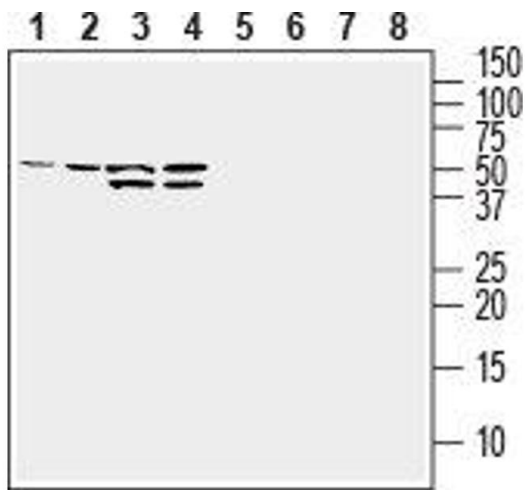
Target:	GLUT1 (SLC2A1)
Alternative Name:	GLUT1 (SLC2A1 Products)
Background:	Alternative names: GLUT1, Glucose transporter 1, Facilitated glucose transporter member 1, SLC2A1
Gene ID:	24778
NCBI Accession:	NM_006516
UniProt:	P11167
Pathways:	Sensory Perception of Sound , Dicarboxylic Acid Transport , Warburg Effect

Application Details

Application Notes:	Optimal working dilution should be determined by the investigator.
Restrictions:	For Research Use only

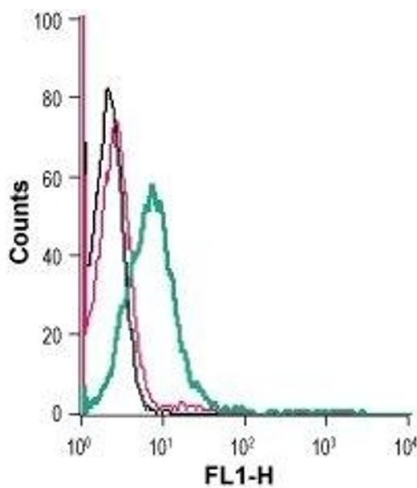
Handling

Format:	Lyophilized
Reconstitution:	25 μ L, 50 μ L or 0.2 mL double distilled water (DDW), depending on the sample size.
Concentration:	0.8 mg/mL
Buffer:	Reconstituted antibody contains phosphate buffered saline (PBS), pH 7.4, 1 % BSA, 0.05 % Sodium azide.
Preservative:	Sodium azide
Precaution of Use:	This product contains Sodium azide: a POISONOUS AND HAZARDOUS SUBSTANCE which should be handled by trained staff only.
Storage:	RT, 4 °C, -20 °C
Storage Comment:	Storage before reconstitution: The antibody ships as a lyophilized powder at room temperature. Upon arrival, it should be stored at -20°C. Storage after reconstitution: The reconstituted solution can be stored at 4°C for up to 1 week. For longer periods, small aliquots should be stored at -20°C. Avoid multiple freezing and thawing. Centrifuge all antibody preparations before use (10000 x g 5 min).



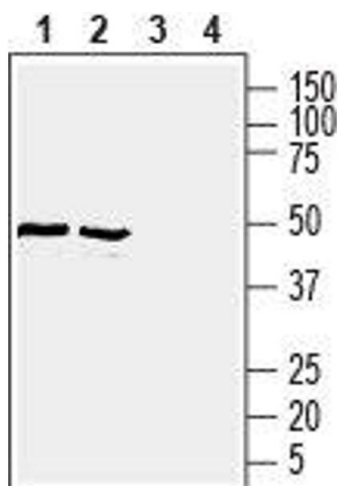
Western Blotting

Image 1. Western blot analysis of human MDA-MB-231 breast adenocarcinoma cell line lysate (lanes 1 and 5), human HepG2 hepatocellular carcinoma cell line lysate (lanes 2 and 6), human K562 chronic myeloid leukemia cell line lysate (lanes 3 and 7) and human Jurkat T-cell leukemia cell line lysate (lanes 4 and 8): - 1-4. Anti-GLUT1 (extracellular) Antibody (ABIN7043692, ABIN7044497 and ABIN7044498), (1:400).5-8. Anti-GLUT1 (extracellular) Antibody, preincubated with GLUT1 (extracellular) Blocking Peptide (#BLP-GT041).



Flow Cytometry

Image 2. Cell surface detection of GLUT1 in live intact human Jurkat T-cell leukemia cells: (black line) Cells.(red line) Cells + goat-anti-rabbit-FITC.(green line) Cells + Anti-GLUT1 (extracellular) Antibody (ABIN7043692, ABIN7044497 and ABIN7044498), (5 µg) + goat-anti-rabbit-FITC.



Western Blotting

Image 3. Western blot analysis of rat (lanes 1 and 3) and mouse (lanes 2 and 4) brain lysates: - 1,2. Anti-GLUT1 (extracellular) Antibody (ABIN7043692, ABIN7044497 and ABIN7044498), (1:400).3,4. Anti-GLUT1 (extracellular) Antibody, preincubated with GLUT1 (extracellular) Blocking Peptide (#BLP-GT041).