

Datasheet for ABIN7043694

anti-SLC2A2 antibody (C-Term, Intracellular)



[Go to Product page](#)

4 Images

Overview

Quantity:	25 µL
Target:	SLC2A2
Binding Specificity:	AA 496-508, C-Term, Intracellular
Reactivity:	Human, Rat, Mouse
Host:	Rabbit
Clonality:	Polyclonal
Conjugate:	This SLC2A2 antibody is un-conjugated
Application:	Western Blotting (WB), Immunohistochemistry (IHC), Immunofluorescence (IF)

Product Details

Immunogen:	Immunogen: Synthetic peptide Immunogen Sequence: (C)EFRKKSGSAPPRK, corresponding to amino acid residues 496-508 of rat Glucose Transporter 2
Isotype:	IgG
Characteristics:	Anti-GLUT2 (SLC2A2) Antibody (ABIN7043694, ABIN7044483 and ABIN7044484)) is a highly specific antibody directed against an epitope of the rat Glucose Transporter 2 protein. The antibody can be used in western blot and immunohistochemistry applications. It has been designed to recognize GLUT2 from human, mouse, and rat samples.
Purification:	Affinity purified on immobilized antigen.

Target Details

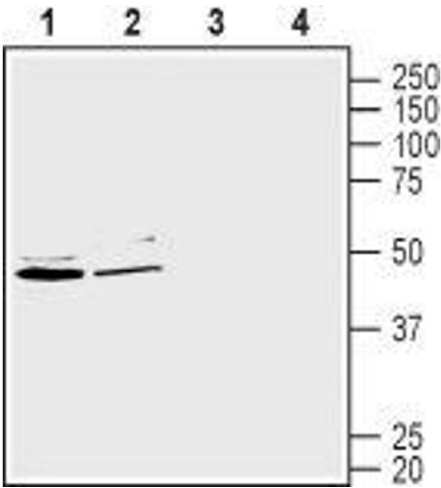
Target:	SLC2A2
Alternative Name:	GLUT2 (SLC2A2) (SLC2A2 Products)
Background:	Alternative names: GLUT2 (SLC2A2), Glucose transporter 2, Facilitated glucose transporter member 2
Gene ID:	25351
NCBI Accession:	NM_000340
UniProt:	P12336
Pathways:	Warburg Effect

Application Details

Application Notes:	Optimal working dilution should be determined by the investigator.
Restrictions:	For Research Use only

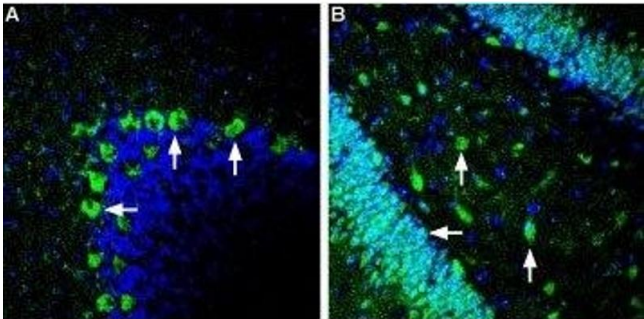
Handling

Format:	Lyophilized
Reconstitution:	25 µL, 50 µL or 0.2 mL double distilled water (DDW), depending on the sample size.
Concentration:	0.8 mg/mL
Buffer:	Reconstituted antibody contains phosphate buffered saline (PBS), pH 7.4, 1 % BSA, 0.05 % Sodium azide.
Preservative:	Sodium azide
Precaution of Use:	This product contains Sodium azide: a POISONOUS AND HAZARDOUS SUBSTANCE which should be handled by trained staff only.
Storage:	RT, 4 °C, -20 °C
Storage Comment:	<p>Storage before reconstitution: The antibody ships as a lyophilized powder at room temperature. Upon arrival, it should be stored at -20°C.</p> <p>Storage after reconstitution: The reconstituted solution can be stored at 4°C for up to 1 week. For longer periods, small aliquots should be stored at -20°C. Avoid multiple freezing and thawing. Centrifuge all antibody preparations before use (10000 x g 5 min).</p>



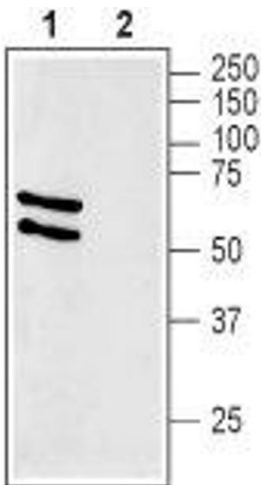
Western Blotting

Image 1. Western blot analysis of human Caco-2 colorectal adenocarcinoma cell line lysate (lanes 1 and 3) and human HepG2 liver hepatocellular carcinoma cell lysate (lanes 2 and 4): - 1-2. Anti-GLUT2 (SLC2A2) Antibody (ABIN7043694, ABIN7044483 and ABIN7044484), (1:400).3-4. Anti-GLUT2 (SLC2A2) Antibody, preincubated with GLUT2/SLC2A2 Blocking Peptide (#BLP-GT022).



Immunohistochemistry

Image 2. Expression of Glucose Transporter 2 in rat cerebellum and hippocampus - Immunohistochemical staining of perfusion-fixed frozen rat brain sections using Anti-GLUT2 (SLC2A2) Antibody (ABIN7043694, ABIN7044483 and ABIN7044484), (1:120), followed by goat-anti-rabbit-AlexaFluor-488 (green). Cell nuclei are stained with DAPI (blue). A. Staining in cerebellum sections, reveals GLUT2 labeling in Purkinje cells (arrows). B. Staining in hippocampus dentate gyrus, shows labeling of both granule cells (horizontal arrow) and in hilar interneurons (vertical arrows).



Western Blotting

Image 3. Western blot analysis of rat liver membranes: - 1. Anti-GLUT2 (SLC2A2) Antibody (ABIN7043694, ABIN7044483 and ABIN7044484), (1:400).2. Anti-GLUT2 (SLC2A2) Antibody, preincubated with GLUT2/SLC2A2 Blocking Peptide (#BLP-GT022).

Please check the [product details page](#) for more images. Overall 4 images are available for ABIN7043694.