

Datasheet for ABIN7043698

anti-SLC2A3 antibody (1st Extracellular Loop)**2** Images[Go to Product page](#)

Overview

Quantity:	0.2 mL
Target:	SLC2A3
Binding Specificity:	1st Extracellular Loop, AA 39-51
Reactivity:	Human
Host:	Rabbit
Clonality:	Polyclonal
Conjugate:	This SLC2A3 antibody is un-conjugated
Application:	Western Blotting (WB), Flow Cytometry (FACS)

Product Details

Immunogen:	Immunogen: Synthetic peptide
	Immunogen Sequence: (C)KEFINKLTLDKGN, corresponding to amino acid residues 39 - 51 of human GLUT3
Isotype:	IgG
Cross-Reactivity (Details):	It will not recognize rat or mouse GLUT3.
Characteristics:	Anti-Human GLUT3 (extracellular) Antibody (ABIN7043698, ABIN7044499 and ABIN7044500)) is a highly specific antibody directed against an epitope of the human protein. The antibody can be used in western blot and live cell flow cytometry applications. The antibody has been designed to recognize GLUT3 from human samples only. This antibody will also recognize the human paralog GLUT14 /SLC2A14.
Purification:	Affinity purified on immobilized antigen.

Target Details

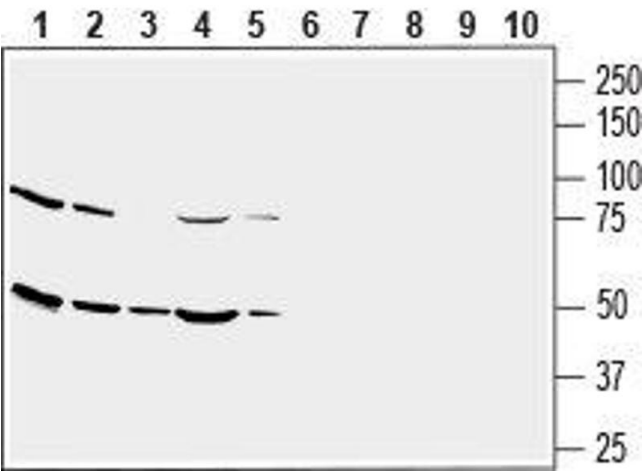
Target:	SLC2A3
Alternative Name:	GLUT3 (SLC2A3 Products)
Background:	Alternative names: Glucose transporter 3, Facilitated glucose transporter member 3, SLC2A3
Gene ID:	6515
NCBI Accession:	NM_006931
UniProt:	P11169
Pathways:	Warburg Effect

Application Details

Application Notes:	Optimal working dilution should be determined by the investigator.
Restrictions:	For Research Use only

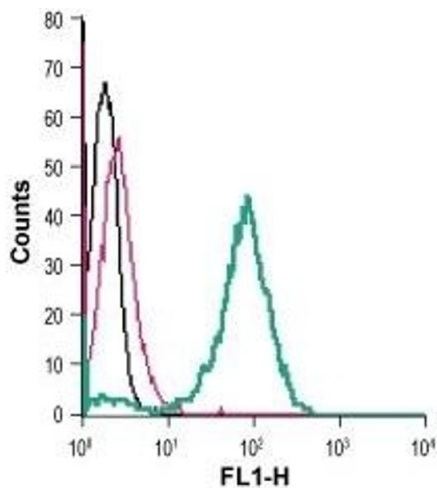
Handling

Format:	Lyophilized
Reconstitution:	25 µL, 50 µL or 0.2 mL double distilled water (DDW), depending on the sample size.
Concentration:	0.8 mg/mL
Buffer:	Reconstituted antibody contains phosphate buffered saline (PBS), pH 7.4, 1 % BSA, 0.05 % Sodium azide.
Preservative:	Sodium azide
Precaution of Use:	This product contains Sodium azide: a POISONOUS AND HAZARDOUS SUBSTANCE which should be handled by trained staff only.
Storage:	RT, 4 °C, -20 °C
Storage Comment:	<p>Storage before reconstitution: The antibody ships as a lyophilized powder at room temperature. Upon arrival, it should be stored at -20°C.</p> <p>Storage after reconstitution: The reconstituted solution can be stored at 4°C for up to 1 week. For longer periods, small aliquots should be stored at -20°C. Avoid multiple freezing and thawing. Centrifuge all antibody preparations before use (10000 x g 5 min).</p>



Western Blotting

Image 1. Western blot analysis of human U-87 MG glioblastoma cell line lysate (lanes 1 and 6), human THP-1 monocytic leukemia cell line lysate (lanes 2 and 7), human SH-SY5Y neuroblastoma cell line lysate (lanes 3 and 8), human MEG-01 megakaryoblastic leukemia cell line lysate (lanes 4 and 9) and human Jurkat T-cell leukemia cell line lysate (lanes 5 and 10): - 1-5. Anti-Human GLUT3 (extracellular) Antibody (ABIN7043698, ABIN7044499 and ABIN7044500), (1:500). 6-10. Anti-Human GLUT3 (extracellular) Antibody, preincubated with Human GLUT3 (extracellular) Blocking Peptide (#BLP-GT043).



Flow Cytometry

Image 2. Cell surface detection of GLUT3 in live intact human THP-1 monocytic leukemia cells: (black line) Cells.(red line) Cells + goat-anti-rabbit-FITC.(green line) Cells + Anti-Human GLUT3 (extracellular) Antibody (ABIN7043698, ABIN7044499 and ABIN7044500), (2.5 µg) + goat-anti-rabbit-FITC.