

Datasheet for ABIN7043702
anti-SLC2A5 antibody (C-Term, Intracellular)[Go to Product page](#)

4 Images

Overview

Quantity:	50 µL
Target:	SLC2A5
Binding Specificity:	AA 477-490, C-Term, Intracellular
Reactivity:	Human, Rat, Mouse
Host:	Rabbit
Clonality:	Polyclonal
Application:	Western Blotting (WB), Immunohistochemistry (IHC), Immunofluorescence (IF)

Product Details

Immunogen:	Immunogen: Synthetic peptide Immunogen Sequence: (C)KNKVSDVYPEKEEK, corresponding to amino acid residues 477 - 490 of rat Glucose Transporter 5
Isotype:	IgG
Characteristics:	Anti-GLUT5 (SLC2A5) Antibody (ABIN7043702, ABIN7044489 and ABIN7044490)) is a highly specific antibody directed against an epitope of the rat Glucose Transporter 5 protein. The antibody can be used in western blot and immunohistochemistry applications. It has been designed to recognize GLUT5 from human, rat, and mouse samples.
Purification:	Affinity purified on immobilized antigen.

Target Details

Target:	SLC2A5
---------	--------

Target Details

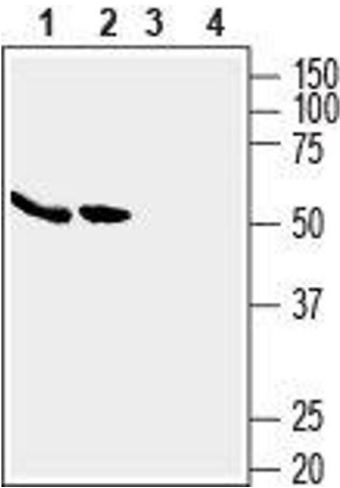
Alternative Name:	GLUT5 (SLC2A5) (SLC2A5 Products)
Background:	Alternative names: GLUT5 (SLC2A5), Glucose transporter 5, Facilitated glucose transporter member 5, Fructose transporter
Gene ID:	65197
NCBI Accession:	NM_003039
UniProt:	P43427

Application Details

Application Notes:	Optimal working dilution should be determined by the investigator.
Restrictions:	For Research Use only

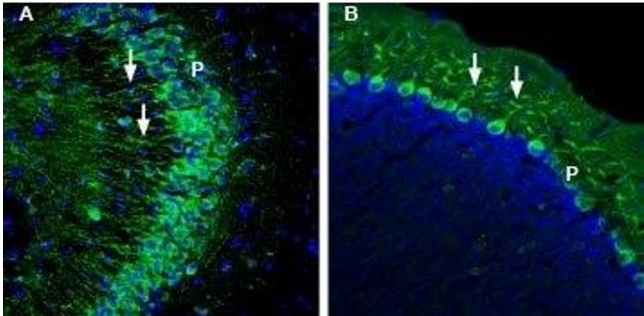
Handling

Format:	Lyophilized
Reconstitution:	25 µL, 50 µL or 0.2 mL double distilled water (DDW), depending on the sample size.
Concentration:	0.8 mg/mL
Buffer:	Reconstituted antibody contains phosphate buffered saline (PBS), pH 7.4, 1 % BSA, 0.05 % Sodium azide.
Preservative:	Sodium azide
Precaution of Use:	This product contains Sodium azide: a POISONOUS AND HAZARDOUS SUBSTANCE which should be handled by trained staff only.
Storage:	RT, 4 °C, -20 °C
Storage Comment:	<p>Storage before reconstitution: The antibody ships as a lyophilized powder at room temperature. Upon arrival, it should be stored at -20°C.</p> <p>Storage after reconstitution: The reconstituted solution can be stored at 4°C for up to 1 week. For longer periods, small aliquots should be stored at -20°C. Avoid multiple freezing and thawing. Centrifuge all antibody preparations before use (10000 x g 5 min).</p>



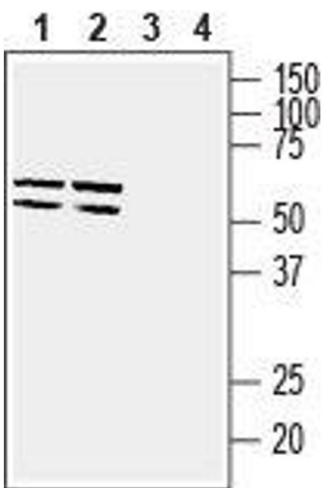
Western Blotting

Image 1. Western blot analysis of human MCF-7 breast adenocarcinoma cell lysates (lanes 1 and 3) and human Caco-2 colon adenocarcinoma cell lysates (lanes 2 and 4): - 1,2. Anti-GLUT5 (SLC2A5) Antibody (ABIN7043702, ABIN7044489 and ABIN7044490), (1:200).3,4. Anti-GLUT5 (SLC2A5) Antibody, preincubated with GLUT5/SLC2A5 Blocking Peptide (#BLP-GT025).



Immunohistochemistry

Image 2. Expression of Glucose Transporter 5 in mouse hippocampus and cerebellum - Immunohistochemical staining of perfusion-fixed frozen mouse brain sections with Anti-GLUT5 (SLC2A5) Antibody (ABIN7043702, ABIN7044489 and ABIN7044490), (1:200), followed by goat-anti-rabbit-AlexaFluor-488. A. GLUT5 staining (green) in hippocampal CA3 region, is detected in cells of the pyramidal layer (P) and in their apical dendrites (arrows). B. GLUT5 staining (green) in cerebellum appears in cells of the Purkinje layer (P) and in their apical dendrites (arrows). Cell nuclei are stained with DAPI (blue).



Western Blotting

Image 3. Western blot analysis of mouse brain membranes (lanes 1 and 3) and rat brain membranes (lanes 2 and 4): - 1,2. Anti-GLUT5 (SLC2A5) Antibody (ABIN7043702, ABIN7044489 and ABIN7044490), (1:400).3,4. Anti-GLUT5 (SLC2A5) Antibody, preincubated with GLUT5/SLC2A5 Blocking Peptide (#BLP-GT025).

Please check the [product details page](#) for more images. Overall 4 images are available for ABIN7043702.