

Datasheet for ABIN7043705

anti-SLC23A2 antibody (2nd Extracellular Loop)

4 Images

[Go to Product page](#)

Overview

Quantity:	50 µL
Target:	SLC23A2
Binding Specificity:	2nd Extracellular Loop, AA 191-204
Reactivity:	Human, Rat, Mouse
Host:	Rabbit
Clonality:	Polyclonal
Conjugate:	This SLC23A2 antibody is un-conjugated
Application:	Western Blotting (WB), Immunohistochemistry (IHC), Immunofluorescence (IF), Flow Cytometry (FACS)

Product Details

Immunogen:	Immunogen: Synthetic peptide
	Immunogen Sequence: (C)EITVANGTAELLEH, corresponding to amino acid residues 191-204 of mouse SVCT2
Isotype:	IgG
Characteristics:	Anti-SVCT2/SLC23A2 (extracellular) Antibody (ABIN7043705, ABIN7045312 and ABIN7045313)) is a highly specific antibody directed against an epitope of the mouse protein. The antibody can be used in western blot and indirect live cell flow cytometry applications. It has been designed to recognize SVCT2 from rat, mouse, and human samples.
Purification:	Affinity purified on immobilized antigen.

Target Details

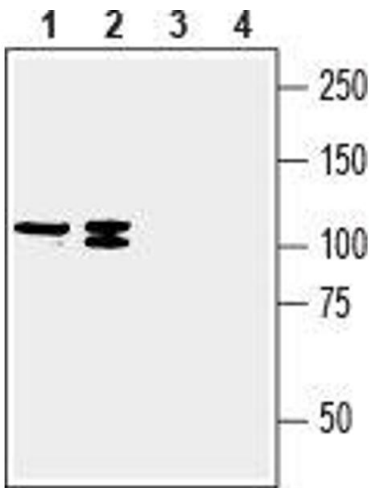
Target:	SLC23A2
Alternative Name:	SVCT2/SLC23A2 (SLC23A2 Products)
Background:	Alternative names: Sodium-dependent vitamin C transporter 2, Na+/L-Ascorbic acid transporter 2, Solute carrier family 23 member 2, SVCT2, SLC23A2
Gene ID:	54338
NCBI Accession:	NM_005116
UniProt:	Q9EPR4
Pathways:	Skeletal Muscle Fiber Development

Application Details

Application Notes:	Optimal working dilution should be determined by the investigator.
Restrictions:	For Research Use only

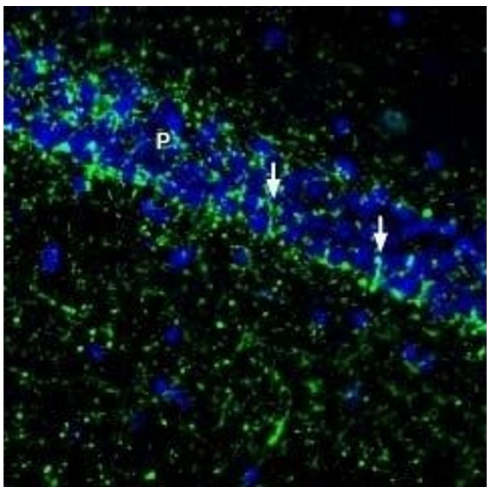
Handling

Format:	Lyophilized
Reconstitution:	25 µL, 50 µL or 0.2 mL double distilled water (DDW), depending on the sample size.
Concentration:	0.8 mg/mL
Buffer:	Reconstituted antibody contains phosphate buffered saline (PBS), pH 7.4, 1 % BSA, 0.05 % Sodium azide.
Preservative:	Sodium azide
Precaution of Use:	This product contains Sodium azide: a POISONOUS AND HAZARDOUS SUBSTANCE which should be handled by trained staff only.
Storage:	RT, 4 °C, -20 °C
Storage Comment:	<p>Storage before reconstitution: The antibody ships as a lyophilized powder at room temperature. Upon arrival, it should be stored at -20°C.</p> <p>Storage after reconstitution: The reconstituted solution can be stored at 4°C for up to 1 week. For longer periods, small aliquots should be stored at -20°C. Avoid multiple freezing and thawing. Centrifuge all antibody preparations before use (10000 x g 5 min).</p>



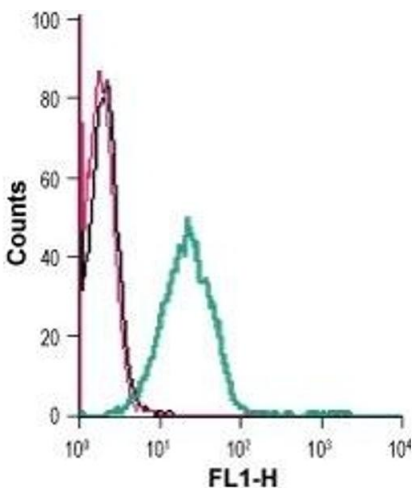
Western Blotting

Image 1. Western blot analysis of human MCF-7 breast adenocarcinoma (lanes 1 and 3) and human COLO 205 colon adenocarcinoma (lanes 2 and 4) cell line lysates: - 1,2. Anti-SVCT2/SLC23A2 (extracellular) Antibody (ABIN7043705, ABIN7045312 and ABIN7045313), (1:200).3,4. Anti-SVCT2/SLC23A2 (extracellular) Antibody, preincubated with SVCT2/SLC23A2 (extracellular) Blocking Peptide (#BLP-ST022).



Immunohistochemistry

Image 2. Expression of SVCT2 in mouse hippocampus - Immunohistochemical staining of perfusion-fixed frozen mouse brain sections with Anti-SVCT2/SLC23A2 (extracellular) Antibody (ABIN7043705, ABIN7045312 and ABIN7045313), (1:200), followed by goat anti-rabbit-AlexaFluor-488. SVCT2 staining (green) in CA1 hippocampal region is detected in axonal processes (arrows), with the highest density surrounding the pyramidal layer (P). Cell nuclei are stained with DAPI (blue).



Flow Cytometry

Image 3. Cell surface detection of SVCT2 in live intact human Jurkat T-cell leukemia cells: (black line) Cells.(red line) Cells + goat-anti-rabbit-FITC.(green line) Cells + Anti-SVCT2/SLC23A2 (extracellular) Antibody (ABIN7043705, ABIN7045312 and ABIN7045313), (5 µg) + goat-anti-rabbit-FITC.

Please check the [product details page](#) for more images. Overall 4 images are available for ABIN7043705.