

Datasheet for ABIN7043706

**anti-SLC25A12 antibody (Intracellular, N-Term)****2** Images[Go to Product page](#)

## Overview

Quantity:	25 µL
Target:	SLC25A12 (Slc25a12)
Binding Specificity:	AA 169-181, Intracellular, N-Term
Reactivity:	Human, Mouse, Rat
Host:	Rabbit
Clonality:	Polyclonal
Application:	Western Blotting (WB)

## Product Details

Immunogen:	Immunogen: Synthetic peptide Immunogen Sequence: (C)KDKSKSGMISGLD, corresponding to amino acid residues 169-181 of mouse SLC25A12
Isotype:	IgG
Characteristics:	Anti-SLC25A12 Antibody (ABIN7043706, ABIN7044837 and ABIN7044838)) is a highly selective antibody directed against an epitope of the mouse protein. The antibody can be used in western blot analysis. It has been designed to recognize AGC1 from human, mouse, and rat samples.
Purification:	Affinity purified on immobilized antigen.

## Target Details

Target:	SLC25A12 (Slc25a12)
Alternative Name:	SLC25A12 ( <a href="#">Slc25a12 Products</a> )

## Target Details

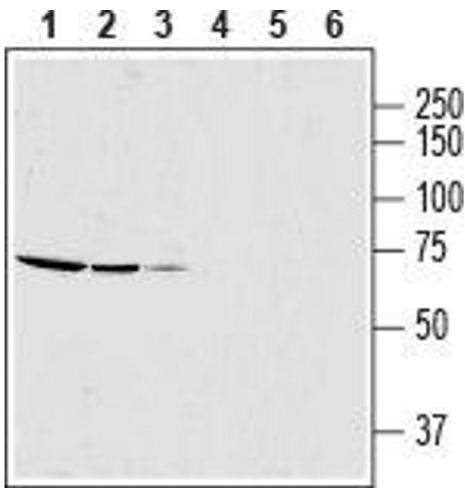
Background:	Alternative names: SLC25A12, AGC1, ARALAR1, Solute carrier family 25 member 12, Mitochondrial aspartate glutamate carrier 1, Calcium-binding mitochondrial carrier protein Aralar1, Araceli hiperlarga
Gene ID:	78830
NCBI Accession:	<a href="#">NM_003705</a>
UniProt:	<a href="#">Q8BH59</a>
Pathways:	<a href="#">Ribonucleoside Biosynthetic Process</a> , <a href="#">Dicarboxylic Acid Transport</a>

## Application Details

Application Notes:	Optimal working dilution should be determined by the investigator.
Restrictions:	For Research Use only

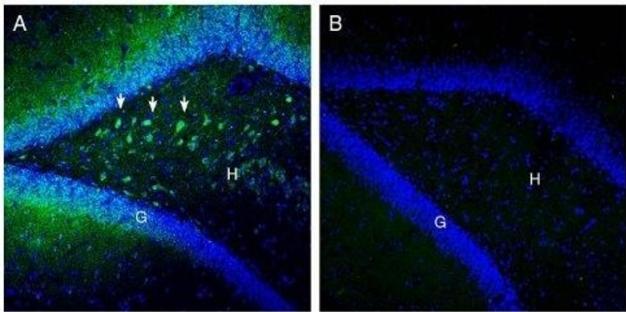
## Handling

Format:	Lyophilized
Reconstitution:	25 µL, 50 µL or 0.2 mL double distilled water (DDW), depending on the sample size.
Concentration:	0.8 mg/mL
Buffer:	Reconstituted antibody contains phosphate buffered saline (PBS), pH 7.4, 1 % BSA, 0.05 % Sodium azide.
Preservative:	Sodium azide
Precaution of Use:	This product contains Sodium azide: a POISONOUS AND HAZARDOUS SUBSTANCE which should be handled by trained staff only.
Storage:	RT, 4 °C, -20 °C
Storage Comment:	<p>Storage before reconstitution: The antibody ships as a lyophilized powder at room temperature. Upon arrival, it should be stored at -20°C.</p> <p>Storage after reconstitution: The reconstituted solution can be stored at 4°C for up to 1 week. For longer periods, small aliquots should be stored at -20°C. Avoid multiple freezing and thawing. Centrifuge all antibody preparations before use (10000 x g 5 min).</p>



### Western Blotting

**Image 1.** Western blot analysis of rat skeletal muscle lysate (lanes 1 and 4, 1:600), mouse brain membrane (lanes 2 and 5) and human OVCAR3 ovarian adenocarcinoma cell line lysate (lanes 3 and 6): - 1-3. Anti-SLC25A12 Antibody (ABIN7043706, ABIN7044837 and ABIN7044838), (1:200). 4-6. Anti-SLC25A12 Antibody, preincubated with SLC25A12 Blocking Peptide (#BLP-NT112).



### Immunohistochemistry

**Image 2.** Expression of SLC25A12 in rat hippocampus. - Immunohistochemical staining of perfusion-fixed frozen rat brain sections with Anti-SLC25A12 Antibody (ABIN7043706, ABIN7044837 and ABIN7044838), (1:200), followed by goat anti-rabbit-AlexaFluor-488. A. Staining in the rat hippocampal dentate gyrus region, showed immunoreactivity (green) in neurons of the hilus (H, arrows). B. Pre-incubation of the antibody with SLC25A12 Blocking Peptide (#BLP-NT112), suppressed staining. Cell nuclei are stained with DAPI (blue). G = granule layer.