

Datasheet for ABIN7043707

anti-SLC28A1 antibody (Intracellular, N-Term)[Go to Product page](#)**1** Image

Overview

Quantity:	50 µL
Target:	SLC28A1
Binding Specificity:	AA 22-36, Intracellular, N-Term
Reactivity:	Mouse, Rat
Host:	Rabbit
Clonality:	Polyclonal
Application:	Western Blotting (WB)

Product Details

Immunogen:	Immunogen: Synthetic peptide Immunogen Sequence: (C)ENMGAEFLESMEEGR, corresponding to amino acid residues 22-36 of rat SLC28A1
Isotype:	IgG
Characteristics:	Anti-SLC28A1 (CNT1) Antibody (ABIN7043707 and ABIN7044804)) is a highly specific antibody directed against an epitope of the rat Concentrative nucleoside transporter 1. The antibody can be used in western blot analysis. It has been designed to recognize CNT1 from human, rat, and mouse samples.
Purification:	Affinity purified on immobilized antigen.

Target Details

Target:	SLC28A1
---------	---------

Target Details

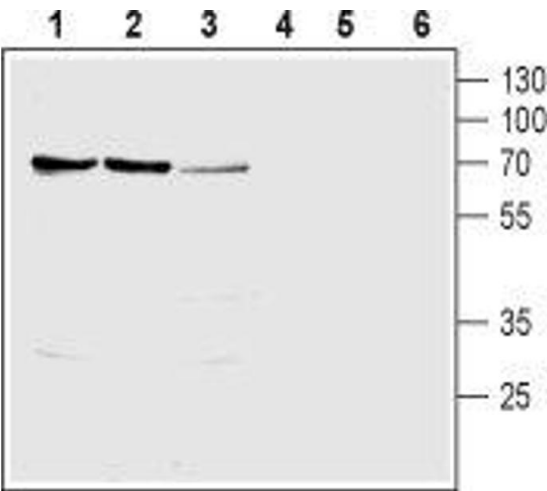
Alternative Name:	SLC28A1 (CNT1) (SLC28A1 Products)
Background:	Alternative names: SLC28A1 (CNT1), Concentrative nucleoside transporter 1, Sodium/nucleoside cotransporter 1
Gene ID:	116642
NCBI Accession:	NM_001287761
UniProt:	Q62674

Application Details

Application Notes:	Optimal working dilution should be determined by the investigator.
Restrictions:	For Research Use only

Handling

Format:	Lyophilized
Reconstitution:	50 µL or 0.2 mL double distilled water (DDW), depending on the sample size.
Concentration:	0.8 mg/mL
Buffer:	Reconstituted antibody contains phosphate buffered saline (PBS), pH 7.4, 1 % BSA, 0.05 % Sodium azide.
Preservative:	Sodium azide
Precaution of Use:	This product contains Sodium azide: a POISONOUS AND HAZARDOUS SUBSTANCE which should be handled by trained staff only.
Storage:	RT, 4 °C, -20 °C
Storage Comment:	<p>Storage before reconstitution: The antibody ships as a lyophilized powder at room temperature. Upon arrival, it should be stored at -20°C.</p> <p>Storage after reconstitution: The reconstituted solution can be stored at 4°C for up to 1 week. For longer periods, small aliquots should be stored at -20°C. Avoid multiple freezing and thawing. Centrifuge all antibody preparations before use (10000 x g 5 min).</p>



Western Blotting

Image 1. Western blot analysis of rat kidney (lanes 1 and 4), rat liver (lanes 2 and 5) and mouse kidney (lanes 3 and 6) lysates: - 1-3. Anti-SLC28A1 (CNT1) Antibody (ABIN7043707 and ABIN7044804), (1:200).4-6. Anti-SLC28A1 (CNT1) Antibody, preincubated with SLC28A1/CNT1 Blocking Peptide (#BLP-NT061).