

Datasheet for ABIN7043711

anti-SLC29A2 antibody (3rd Intracellular Loop)



[Go to Product page](#)

3 Images

Overview

Quantity:	50 µL
Target:	SLC29A2
Binding Specificity:	3rd Intracellular Loop, AA 273-288
Reactivity:	Mouse, Rat
Host:	Rabbit
Clonality:	Polyclonal
Conjugate:	This SLC29A2 antibody is un-conjugated
Application:	Western Blotting (WB), Immunohistochemistry (IHC), Immunofluorescence (IF), Immunocytochemistry (ICC)

Product Details

Immunogen:	Immunogen: Synthetic peptide Immunogen Sequence: (C)EPQKPGKPSVFWFRK, corresponding to amino acid residues 273-288 of rat ENT2
Isotype:	IgG
Characteristics:	Anti-ENT2 (SLC29A2) Antibody (ABIN7043711 and ABIN7044801)) is a highly specific antibody directed against an epitope of the rat equilibrative nucleoside transporter 2. The antibody can be used in western blot, immunohistochemistry, and immunocytochemistry applications. It has been designed to recognize ENT2 from rat, mouse, and human samples.
Purification:	Affinity purified on immobilized antigen.

Target Details

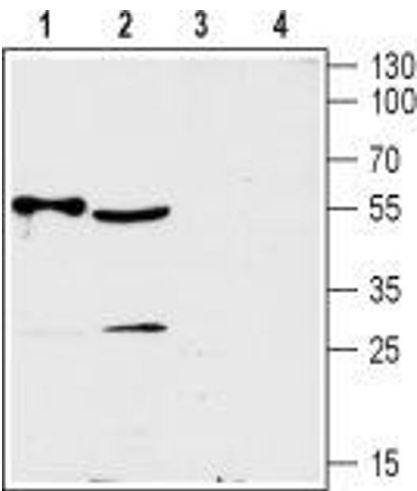
Target:	SLC29A2
Alternative Name:	ENT2 (SLC29A2) (SLC29A2 Products)
Background:	Alternative names: ENT2 (SLC29A2), Equilibrative nucleoside transporter 2, Nucleoside transporter ei-type
Gene ID:	65194
NCBI Accession:	NM_001532
UniProt:	O54699

Application Details

Application Notes:	Optimal working dilution should be determined by the investigator.
Restrictions:	For Research Use only

Handling

Format:	Lyophilized
Reconstitution:	50 µL or 0.2 mL double distilled water (DDW), depending on the sample size.
Concentration:	0.8 mg/mL
Buffer:	Reconstituted antibody contains phosphate buffered saline (PBS), pH 7.4, 1 % BSA, 0.05 % Sodium azide.
Preservative:	Sodium azide
Precaution of Use:	This product contains Sodium azide: a POISONOUS AND HAZARDOUS SUBSTANCE which should be handled by trained staff only.
Storage:	RT, 4 °C, -20 °C
Storage Comment:	<p>Storage before reconstitution: The antibody ships as a lyophilized powder at room temperature. Upon arrival, it should be stored at -20°C.</p> <p>Storage after reconstitution: The reconstituted solution can be stored at 4°C for up to 1 week. For longer periods, small aliquots should be stored at -20°C. Avoid multiple freezing and thawing. Centrifuge all antibody preparations before use (10000 x g 5 min).</p>



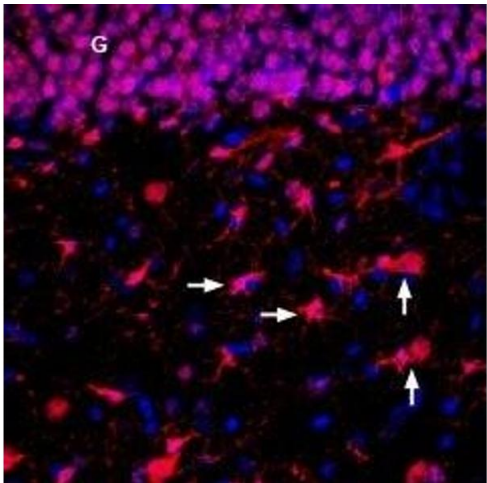
Western Blotting

Image 1. Western blot analysis of rat heart (lanes 1 and 3) and mouse brain (lanes 2 and 4) lysates: - 1,2. Anti-ENT2 (SLC29A2) Antibody (ABIN7043711 and ABIN7044801), (1:200).3,4. Anti-ENT2 (SLC29A2) Antibody, preincubated with ENT2/SLC29A2 Blocking Peptide (#BLP-NT052).



Immunocytochemistry

Image 2. Expression of ENT2 in mouse C2C12 myoblast cells - Immunocytochemical staining of fixed and permeabilized mouse C2C12 myoblast cells. A. Cells were stained with Anti-ENT2 (SLC29A2) Antibody (ABIN7043711 and ABIN7044801), (1:500), followed by goat anti-rabbit-AlexaFluor-594 secondary antibody (red). B. Cell nuclei were visualized using Hoechst 33342 (blue). C. Merge of the two images.



Immunohistochemistry

Image 3. Expression of ENT2 in rat hippocampus - Immunohistochemical staining of perfusion-fixed frozen rat brain sections with Anti-ENT2 (SLC29A2) Antibody (ABIN7043711 and ABIN7044801), (1:300), followed by donkey anti-rabbit-biotin and streptavidin-Cy3. ENT2 staining (red) in the rat hippocampal dentate gyrus is detected in the granule layer (G), in hilar neurons (vertical arrows) and astrocytes (horizontal arrows). Cell nuclei are stained with DAPI (blue).