



[Go to Product page](#)

Datasheet for ABIN7043712

## anti-SLC29A3 antibody (Intracellular, N-Term)

### 1 Image

#### Overview

Quantity:	50 µL
Target:	SLC29A3
Binding Specificity:	AA 37-49, Intracellular, N-Term
Reactivity:	Mouse, Rat
Host:	Rabbit
Clonality:	Polyclonal
Conjugate:	This SLC29A3 antibody is un-conjugated
Application:	Western Blotting (WB)

#### Product Details

Immunogen:	Immunogen: Synthetic peptide Immunogen Sequence: (C)DYPAPGLQRPEDR, corresponding to amino acid residues 37-49 of rat ENT3
Isotype:	IgG
Characteristics:	Anti-ENT3 (SLC29A3) Antibody (ABIN7043712, ABIN7044802 and ABIN7044803)) is a highly specific antibody directed against an epitope of the rat equilibrative nucleoside transporter 3. The antibody can be used in western blot analysis. It has been designed to recognize ENT3 from rat, mouse, and human samples.
Purification:	Affinity purified on immobilized antigen.

## Target Details

---

Target:	SLC29A3
Alternative Name:	ENT3 (SLC29A3) ( <a href="#">SLC29A3 Products</a> )
Background:	Alternative names: ENT3 (SLC29A3), Equilibrative nucleoside transporter 3
Gene ID:	353307
NCBI Accession:	<a href="#">NM_018344</a>
UniProt:	<a href="#">Q80WK7</a>

## Application Details

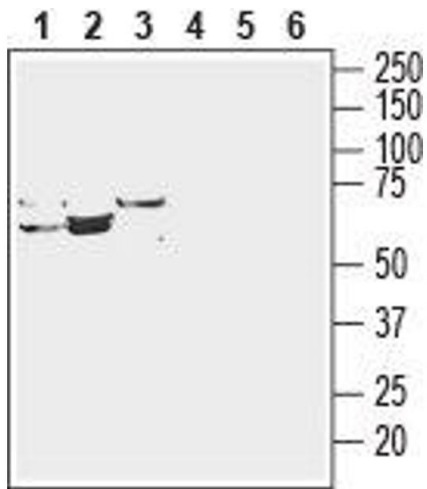
---

Application Notes:	Optimal working dilution should be determined by the investigator.
Restrictions:	For Research Use only

## Handling

---

Format:	Lyophilized
Reconstitution:	25 $\mu$ L, 50 $\mu$ L or 0.2 mL double distilled water (DDW), depending on the sample size.
Concentration:	0.8 mg/mL
Buffer:	Reconstituted antibody contains phosphate buffered saline (PBS), pH 7.4, 1 % BSA, 0.05 % Sodium azide.
Preservative:	Sodium azide
Precaution of Use:	This product contains Sodium azide: a POISONOUS AND HAZARDOUS SUBSTANCE which should be handled by trained staff only.
Storage:	RT, 4 °C, -20 °C
Storage Comment:	Storage before reconstitution: The antibody ships as a lyophilized powder at room temperature. Upon arrival, it should be stored at -20°C. Storage after reconstitution: The reconstituted solution can be stored at 4°C for up to 1 week. For longer periods, small aliquots should be stored at -20°C. Avoid multiple freezing and thawing. Centrifuge all antibody preparations before use (10000 x g 5 min).



#### Western Blotting

**Image 1.** Western blot analysis of rat liver lysate (lanes 1 and 4), mouse liver lysate (lanes 2 and 5) and rat kidney membranes (lanes 3 and 6): - 1-3. Anti-ENT3 (SLC29A3) Antibody (ABIN7043712, ABIN7044802 and ABIN7044803), (1:200).4-6. Anti-ENT3 (SLC29A3) Antibody, preincubated with ENT3/SLC29A3 Blocking Peptide (#BLP-NT053).