

Datasheet for ABIN7043714

anti-SLC30A1 antibody (C-Term, Intracellular)**2** Images[Go to Product page](#)

Overview

| | |
|----------------------|--|
| Quantity: | 25 µL |
| Target: | SLC30A1 |
| Binding Specificity: | AA 473-485, C-Term, Intracellular |
| Reactivity: | Mouse, Rat |
| Host: | Rabbit |
| Clonality: | Polyclonal |
| Application: | Western Blotting (WB), Immunohistochemistry (IHC), Immunofluorescence (IF) |

Product Details

| | |
|------------------|---|
| Immunogen: | Immunogen: Synthetic peptide Immunogen Sequence: (C)ENLEKKPRRTKAE, corresponding to amino acid residues 473-485 of rat ZnT1 |
| Isotype: | IgG |
| Characteristics: | Anti-ZnT1 (SLC30A1) Antibody is directed against an epitope of the rat Zinc transporter 1. Anti-ZnT1 (SLC30A1) Antibody (ABIN7043714, ABIN7045352 and ABIN7045353)) can be used in western blot and immunohistochemistry applications. It has been designed to recognize ZnT1 from mouse, rat, and human samples. |
| Purification: | Affinity purified on immobilized antigen. |

Target Details

| | |
|---------|---------|
| Target: | SLC30A1 |
|---------|---------|

Target Details

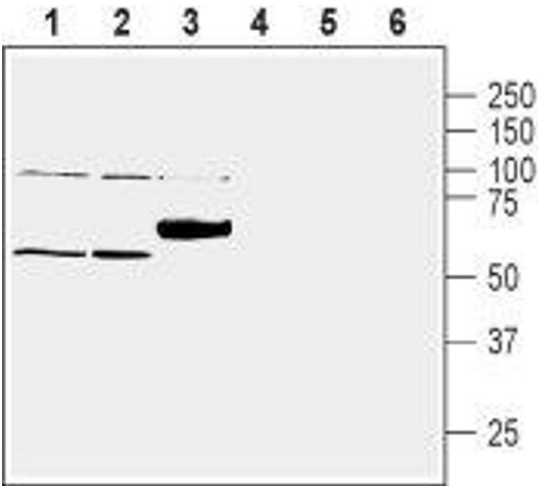
| | |
|-------------------|--|
| Alternative Name: | ZnT1 (SLC30A1) (SLC30A1 Products) |
| Background: | Alternative names: ZnT1 (SLC30A1), Zinc transporter 1, ZRC 1 |
| Gene ID: | 58976 |
| NCBI Accession: | NM_021194 |
| UniProt: | Q62720 |
| Pathways: | Transition Metal Ion Homeostasis |

Application Details

| | |
|--------------------|--|
| Application Notes: | Optimal working dilution should be determined by the investigator. |
| Restrictions: | For Research Use only |

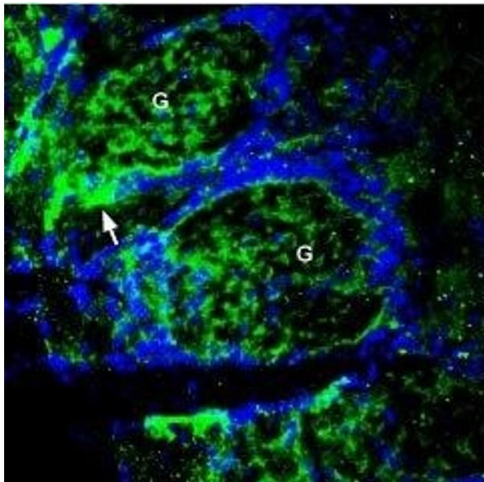
Handling

| | |
|--------------------|--|
| Format: | Lyophilized |
| Reconstitution: | 25 µL, 50 µL or 0.2 mL double distilled water (DDW), depending on the sample size. |
| Concentration: | 0.8 mg/mL |
| Buffer: | Reconstituted antibody contains phosphate buffered saline (PBS), pH 7.4, 1 % BSA, 0.05 % Sodium azide. |
| Preservative: | Sodium azide |
| Precaution of Use: | This product contains Sodium azide: a POISONOUS AND HAZARDOUS SUBSTANCE which should be handled by trained staff only. |
| Storage: | RT, 4 °C, -20 °C |
| Storage Comment: | <p>Storage before reconstitution: The antibody ships as a lyophilized powder at room temperature. Upon arrival, it should be stored at -20°C.</p> <p>Storage after reconstitution: The reconstituted solution can be stored at 4°C for up to 1 week. For longer periods, small aliquots should be stored at -20°C. Avoid multiple freezing and thawing. Centrifuge all antibody preparations before use (10000 x g 5 min).</p> |



Western Blotting

Image 1. Western blot analysis of mouse lung lysate (lanes 1 and 4), rat liver lysate (lanes 2 and 5) and rat brain membranes (lanes 3 and 6): - 1-3. Anti-ZnT1 (SLC30A1) Antibody (ABIN7043714, ABIN7045352 and ABIN7045353), (1:400). 4-6. Anti-ZnT1 (SLC30A1) Antibody, preincubated with ZnT1/SLC30A1 Blocking Peptide (#BLP-ZT011).



Immunohistochemistry

Image 2. Expression of Zinc transporter 1 in rat olfactory bulb - Immunohistochemical staining of perfusion-fixed frozen rat brain sections using Anti-ZnT1 (SLC30A1) Antibody (ABIN7043714, ABIN7045352 and ABIN7045353), (1:300), followed by goat anti-rabbit-AlexaFluor-488 antibody. ZnT1 staining (green) appears in glomeruli (G) and is particularly intense in the outer border (arrows). Cell nuclei are labeled with DAPI (blue).