



Datasheet for ABIN7043721

## anti-SLC35G1 antibody (3rd Extracellular Loop)



[Go to Product page](#)

### 3 Images

#### Overview

Quantity:	0.2 mL
Target:	SLC35G1
Binding Specificity:	3rd Extracellular Loop, AA 209-223
Reactivity:	Human, Mouse, Rat
Host:	Rabbit
Clonality:	Polyclonal
Conjugate:	This SLC35G1 antibody is un-conjugated
Application:	Western Blotting (WB)

#### Product Details

Immunogen:	Immunogen: Synthetic peptide Immunogen Sequence: C)SDTSGMEESYSGHLK, corresponding to amino acid residues 209-223 of human SLC35G1
Isotype:	IgG
Characteristics:	Anti-SLC35G1 (extracellular) Antibody (ABIN7043721, ABIN7044861 and ABIN7044862)) is a highly specific antibody directed against an epitope of the human protein. The antibody can be used in western blot analysis. It has been designed to recognize SLC35G1 from human, rat, and mouse samples.
Purification:	Affinity purified on immobilized antigen.

## Target Details

---

Target:	SLC35G1
Alternative Name:	SLC35G1 ( <a href="#">SLC35G1 Products</a> )
Background:	Alternative names: Solute carrier family 35 member G1, Partner of STIM1, POST, Transmembrane protein 20, C10orf60, TMEM20
Gene ID:	159371
NCBI Accession:	<a href="#">NM_153226</a>
UniProt:	<a href="#">Q2M3R5</a>

## Application Details

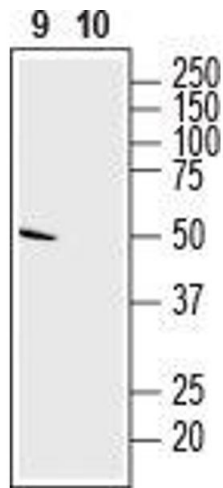
---

Application Notes:	Optimal working dilution should be determined by the investigator.
Restrictions:	For Research Use only

## Handling

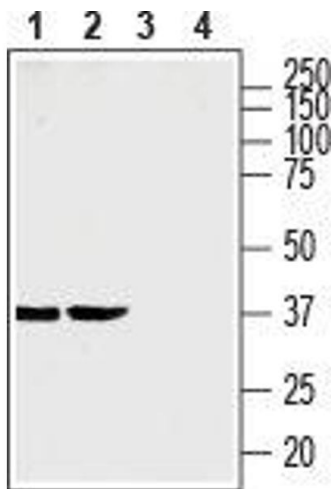
---

Format:	Lyophilized
Reconstitution:	25 µL, 50 µL or 0.2 mL double distilled water (DDW), depending on the sample size.
Concentration:	0.8 mg/mL
Buffer:	Reconstituted antibody contains phosphate buffered saline (PBS), pH 7.4, 1 % BSA, 0.05 % Sodium azide.
Preservative:	Sodium azide
Precaution of Use:	This product contains Sodium azide: a POISONOUS AND HAZARDOUS SUBSTANCE which should be handled by trained staff only.
Storage:	RT, 4 °C, -20 °C
Storage Comment:	Storage before reconstitution: The antibody ships as a lyophilized powder at room temperature. Upon arrival, it should be stored at -20°C. Storage after reconstitution: The reconstituted solution can be stored at 4°C for up to 1 week. For longer periods, small aliquots should be stored at -20°C. Avoid multiple freezing and thawing. Centrifuge all antibody preparations before use (10000 x g 5 min).



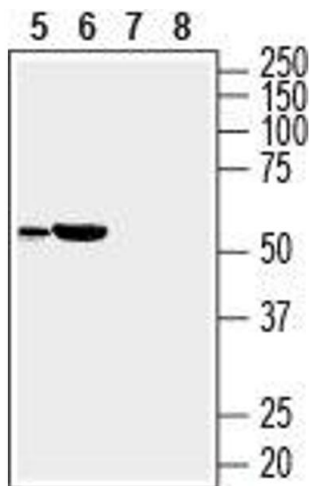
#### Western Blotting

**Image 1.** Western blot analysis of human chronic myelogenous leukemia MEG-O1 cell line (lanes 9 and 10) lysates: - 9. Anti-SLC35G1 (extracellular) Antibody (ABIN7043721, ABIN7044861 and ABIN7044862), (1:400). 10. Anti-SLC35G1 (extracellular) Antibody, preincubated with SLC35G1 (extracellular) Blocking Peptide (#BLP-NT196).



#### Western Blotting

**Image 2.** Western blot analysis of rat brain membrane (lanes 1 and 3) and mouse brain membrane (lanes 2 and 4): - 1, 2. Anti-SLC35G1 (extracellular) Antibody (ABIN7043721, ABIN7044861 and ABIN7044862), (1:200). 3, 4. Anti-SLC35G1 (extracellular) Antibody, preincubated with SLC35G1 (extracellular) Blocking Peptide (#BLP-NT196).



#### Western Blotting

**Image 3.** Western blot analysis of rat heart (lanes 5 and 7) and mouse heart (lanes 6 and 8) lysates: - 5, 6. Anti-SLC35G1 (extracellular) Antibody (ABIN7043721, ABIN7044861 and ABIN7044862), (1:400). 7, 8. Anti-SLC35G1 (extracellular) Antibody, preincubated with SLC35G1 (extracellular) Blocking Peptide (#BLP-NT196).