

Datasheet for ABIN7043725

**anti-SLC39A6 antibody (Extracellular, N-Term)**[Go to Product page](#)

## 4 Images

## Overview

Quantity:	50 µL
Target:	SLC39A6
Binding Specificity:	AA 251-264, Extracellular, N-Term
Reactivity:	Human, Mouse, Rat
Host:	Rabbit
Clonality:	Polyclonal
Conjugate:	This SLC39A6 antibody is un-conjugated
Application:	Western Blotting (WB), Flow Cytometry (FACS)

## Product Details

Immunogen:	Immunogen: Synthetic peptide
	Immunogen Sequence: (C)ESVSEPRKSFMYSR, corresponding to amino acid residues 251-264 of mouse ZIP6
Isotype:	IgG
Characteristics:	Anti-ZIP6/SLC39A6 (extracellular) Antibody (ABIN7043725, ABIN7045348 and ABIN7045349)) is a highly specific antibody directed against an epitope of the mouse protein. The antibody can be used in western blot and indirect live cell flow cytometry applications. It has been designed to recognize LIV-1 from rat, mouse, and human samples.
Purification:	Affinity purified on immobilized antigen.

## Target Details

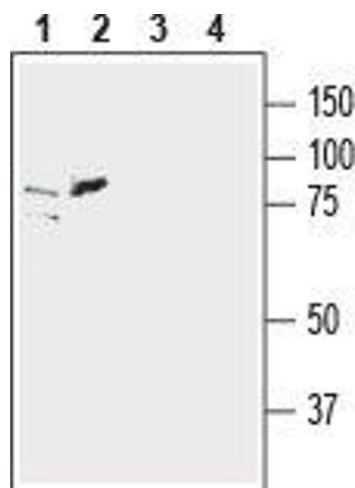
Target:	SLC39A6
Alternative Name:	ZIP6/SLC39A6 ( <a href="#">SLC39A6 Products</a> )
Background:	Alternative names: Zinc transporter ZIP6, Zrt- and Irt-like protein 6, Estrogen-regulated protein LIV-1, LIV1, Solute carrier family 39 member 6
Gene ID:	106957
NCBI Accession:	<a href="#">NM_001099406</a>
UniProt:	<a href="#">Q8C145</a>
Pathways:	<a href="#">Transition Metal Ion Homeostasis</a>

## Application Details

Application Notes:	Optimal working dilution should be determined by the investigator.
Restrictions:	For Research Use only

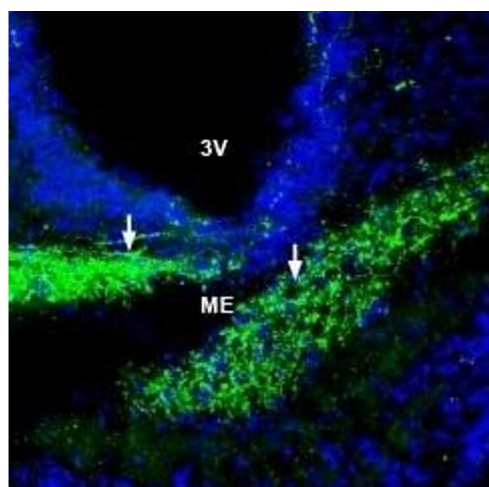
## Handling

Format:	Lyophilized
Reconstitution:	25 µL, 50 µL or 0.2 mL double distilled water (DDW), depending on the sample size.
Concentration:	0.8 mg/mL
Buffer:	Reconstituted antibody contains phosphate buffered saline (PBS), pH 7.4, 1 % BSA, 0.05 % Sodium azide.
Preservative:	Sodium azide
Precaution of Use:	This product contains Sodium azide: a POISONOUS AND HAZARDOUS SUBSTANCE which should be handled by trained staff only.
Storage:	RT, 4 °C, -20 °C
Storage Comment:	<p>Storage before reconstitution: The antibody ships as a lyophilized powder at room temperature. Upon arrival, it should be stored at -20°C.</p> <p>Storage after reconstitution: The reconstituted solution can be stored at 4°C for up to 1 week. For longer periods, small aliquots should be stored at -20°C. Avoid multiple freezing and thawing. Centrifuge all antibody preparations before use (10000 x g 5 min).</p>



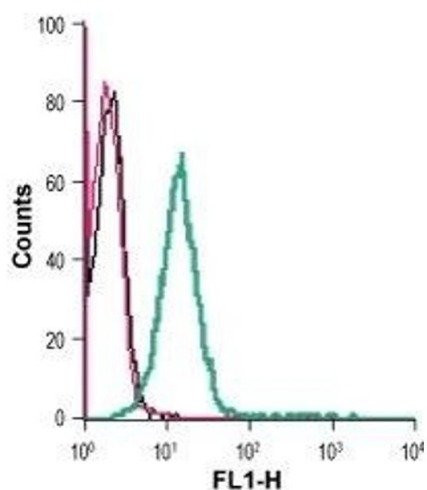
### Western Blotting

**Image 1.** Western blot analysis of human SH-SY5Y (lanes 1 and 3) and human K562 chronic myelogenous leukemia (lanes 2 and 4) cell line lysates: - 1,2. Anti-ZIP6/SLC39A6 (extracellular) Antibody (ABIN7043725, ABIN7045348 and ABIN7045349), (1:400).3,4. Anti-ZIP6/SLC39A6 (extracellular) Antibody, preincubated with ZIP6/SLC39A6 (extracellular) Blocking Peptide (#BLP-ZT006).



### Immunohistochemistry

**Image 2.** Expression of ZIP6 in rat hypothalamus - Immunohistochemical staining of perfusion-fixed frozen rat brain sections with Anti-ZIP6/SLC39A6 (extracellular) Antibody (ABIN7043725, ABIN7045348 and ABIN7045349), (1:200), followed by goat anti-rabbit-AlexaFluor-488. ZIP6 immunoreactivity (green) appears in the median eminence (ME, arrows). Cell nuclei are stained with DAPI (blue). 3V = Third ventricle.



### Flow Cytometry

**Image 3.** Cell surface detection of ZIP6 in live intact human Jurkat T-cell leukemia cells: (black line) Cells.(red line) Cells + goat-anti-rabbit-FITC.(green line) Cells + Anti-ZIP6/SLC39A6 (extracellular) Antibody (ABIN7043725, ABIN7045348 and ABIN7045349), (5 µg) + goat-anti-rabbit-FITC.

Please check the [product details page](#) for more images. Overall 4 images are available for ABIN7043725.