

Datasheet for ABIN7043728

anti-SLC4A4 antibody (2nd Extracellular Loop)

4 Images

[Go to Product page](#)

Overview

Quantity:	25 µL
Target:	SLC4A4
Binding Specificity:	2nd Extracellular Loop, AA 672-685
Reactivity:	Rat, Mouse
Host:	Rabbit
Clonality:	Polyclonal
Conjugate:	This SLC4A4 antibody is un-conjugated
Application:	Western Blotting (WB), Immunohistochemistry (IHC), Immunofluorescence (IF), Immunocytochemistry (ICC), Live Cell Imaging (LCI)

Product Details

Immunogen:	Immunogen: Synthetic peptide Immunogen Sequence: (C)KE(S)VKFGGKLVGNN, corresponding to amino acid residues 672-685 of rat NBCe1
Isotype:	IgG
Cross-Reactivity (Details):	Not recommended for human samples. The antibody will recognize all known rat splice variants
Characteristics:	Anti-SLC4A4 (NBC1) (extracellular) Antibody is directed against an extracellular epitope of rat NBCe1. Anti-SLC4A4 (NBC1) (extracellular) Antibody (ABIN7043728, ABIN7044817 and ABIN7044818)) can be used in western blot, immunohistochemistry and live cell imaging applications. The antibody was used to probe NBCe1 in living rat PC12 cells. It has been

Product Details

designed to recognize NBCe1 from rat and mouse samples and is not recommended for use in human samples.

Purification: Affinity purified on immobilized antigen.

Target Details

Target: SLC4A4

Alternative Name: SLC4A4 (NBC1) ([SLC4A4 Products](#))

Background: Alternative names: SLC4A4 (NBC1), Electrogenic sodium bicarbonate cotransporter 1, NBCe1, NBC-like protein, Na⁺/HCO₃⁻ cotransporter

Gene ID: 84484

NCBI Accession: [NM_003759](#)

UniProt: [Q9JL66](#)

Application Details

Application Notes: Optimal working dilution should be determined by the investigator.

Restrictions: For Research Use only

Handling

Format: Lyophilized

Reconstitution: 25 µL, 50 µL or 0.2 mL double distilled water (DDW), depending on the sample size.

Concentration: 0.8 mg/mL

Buffer: Reconstituted antibody contains phosphate buffered saline (PBS), pH 7.4, 1 % BSA, 0.05 % Sodium azide.

Preservative: Sodium azide

Precaution of Use: This product contains Sodium azide: a POISONOUS AND HAZARDOUS SUBSTANCE which should be handled by trained staff only.

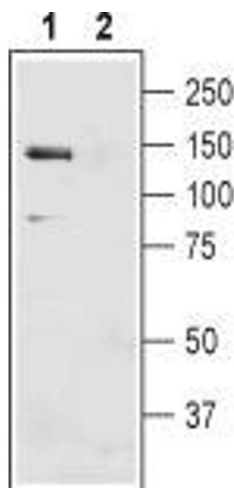
Storage: RT, 4 °C, -20 °C

Storage Comment: Storage before reconstitution: The antibody ships as a lyophilized powder at room temperature. Upon arrival, it should be stored at -20°C.

Storage after reconstitution: The reconstituted solution can be stored at 4°C for up to 1 week.

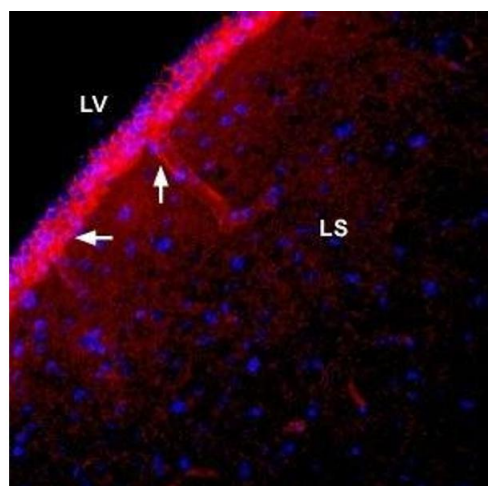
For longer periods, small aliquots should be stored at -20°C. Avoid multiple freezing and thawing. Centrifuge all antibody preparations before use (10000 x g 5 min).

Images



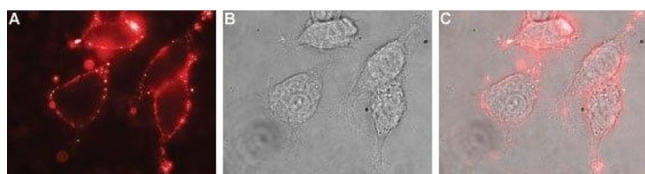
Western Blotting

Image 1. Western blot analysis of mouse liver membranes: -
1. Anti-SLC4A4 (NBC1) (extracellular) Antibody (ABIN7043728, ABIN7044817 and ABIN7044818), (1:400). 2. Anti-SLC4A4 (NBC1) (extracellular) Antibody, preincubated with SLC4A4/NBC1 (extracellular) Blocking Peptide (#BLP-NT075).



Immunohistochemistry

Image 2. Expression of NBCe1 in rat lateral septum - Immunohistochemical staining of immersion-fixed, free floating rat brain frozen sections using Anti-SLC4A4 (NBC1) (extracellular) Antibody (ABIN7043728, ABIN7044817 and ABIN7044818), (1:400). NBCe1 staining (red) is detected in blood vessel outlines (vertical arrow) in the lateral septum (LS) and along the wall of the lateral ventricle (LV) (horizontal arrow). DAPI is used as the counterstain (blue).



Immunocytochemistry

Image 3. Expression of NBC1 in rat PC12 cells - Cell surface detection of NBC1 in live intact rat PC12 pheochromocytoma cells. A. Extracellular staining of cells with Anti-SLC4A4 (NBC1) (extracellular) Antibody (ABIN7043728, ABIN7044817 and ABIN7044818), (1:100), followed by goat anti-rabbit-AlexaFluor-594 secondary antibody (red). B. Live image of the cells. C. Merge of the two images.

Please check the [product details page](#) for more images. Overall 4 images are available for ABIN7043728.