

Datasheet for ABIN7043730

anti-SLC41A2 antibody (Extracellular, N-Term)

4 Images

[Go to Product page](#)

Overview

Quantity:	0.2 mL
Target:	SLC41A2
Binding Specificity:	AA 78-91, Extracellular, N-Term
Reactivity:	Human, Mouse, Rat
Host:	Rabbit
Clonality:	Polyclonal
Conjugate:	This SLC41A2 antibody is un-conjugated
Application:	Western Blotting (WB)

Product Details

Immunogen:	Immunogen: Synthetic peptide
	Immunogen Sequence: (C)KRSEPHLDYHEFSE, corresponding to amino acid residues 78-91 of mouse SLC41A2
Isotype:	IgG
Characteristics:	Anti-SLC41A2 (extracellular) Antibody (ABIN7043730, ABIN7044849 and ABIN7044850)) is a highly selective antibody directed against an epitope of the mouse protein. The antibody can be used in western blot analysis. It has been designed to recognize SLC41A2 from human, mouse, and rat samples.
Purification:	Affinity purified on immobilized antigen.

Target Details

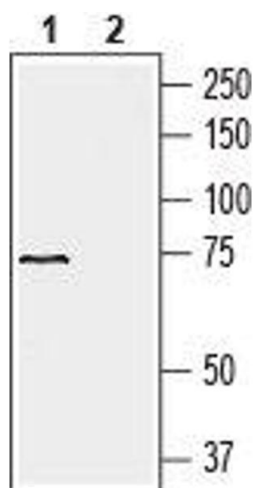
Target:	SLC41A2
Alternative Name:	SLC41A2 (SLC41A2 Products)
Background:	Alternative names: Solute carrier family 41 member 2, Solute carrier family 41 (magnesium transporter), Member 2
Gene ID:	338365
NCBI Accession:	NM_032148
UniProt:	Q8BYR8

Application Details

Application Notes:	Optimal working dilution should be determined by the investigator.
Restrictions:	For Research Use only

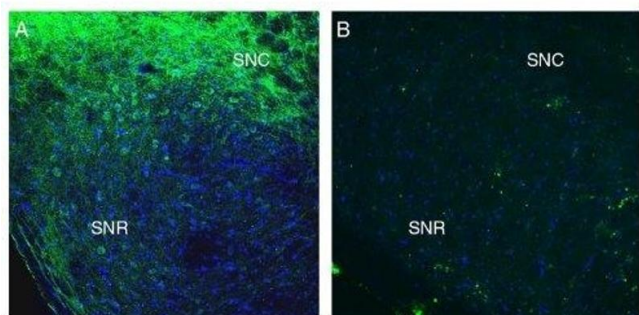
Handling

Format:	Lyophilized
Reconstitution:	25 µL, 50 µL or 0.2 mL double distilled water (DDW), depending on the sample size.
Concentration:	0.8 mg/mL
Buffer:	Reconstituted antibody contains phosphate buffered saline (PBS), pH 7.4, 1 % BSA, 0.05 % Sodium azide.
Preservative:	Sodium azide
Precaution of Use:	This product contains Sodium azide: a POISONOUS AND HAZARDOUS SUBSTANCE which should be handled by trained staff only.
Storage:	RT, 4 °C, -20 °C
Storage Comment:	<p>Storage before reconstitution: The antibody ships as a lyophilized powder at room temperature. Upon arrival, it should be stored at -20°C.</p> <p>Storage after reconstitution: The reconstituted solution can be stored at 4°C for up to 1 week. For longer periods, small aliquots should be stored at -20°C. Avoid multiple freezing and thawing. Centrifuge all antibody preparations before use (10000 x g 5 min).</p>



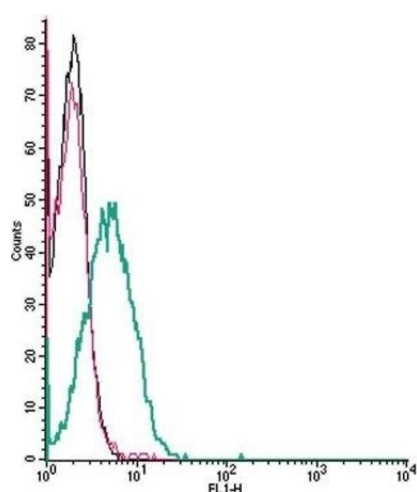
Western Blotting

Image 1. Western blot analysis of human liver carcinoma HepG2 cell line lysate (lanes 1 and 2): - 1. Anti-SLC41A2 (extracellular) Antibody (ABIN7043730, ABIN7044849 and ABIN7044850), (1:1000). 2. Anti-SLC41A2 (extracellular) Antibody, preincubated with SLC41A2 (extracellular) Blocking Peptide (#BLP-NT146).



Immunohistochemistry

Image 2. Expression of SLC41A2 in mouse midbrain. - Immunohistochemical staining of perfusion-fixed frozen mouse brain sections with Anti-SLC41A2 (extracellular) Antibody (ABIN7043730, ABIN7044849 and ABIN7044850), (1:200), followed by goat anti-rabbit-AlexaFluor-488. A. Staining in the substantia nigra region, showed SLC41A2 immunoreactivity (green) in the substantia nigra pars compacta (SNC). B. Pre-incubation of the antibody with SLC41A2 (extracellular) Blocking Peptide (BLP-NT146), suppressed staining. Cell nuclei are stained with DAPI (blue). SNR = substantia nigra pars reticulata.



Flow Cytometry

Image 3. Cell surface detection of SLC41A2 by indirect flow cytometry in live intact human Jurkat T-cell leukemia cells: (black line) Cells.(red line) Cells + goat-anti-rabbit-FITC.(green line) Cells + Anti-SLC41A2 (extracellular) Antibody (ABIN7043730, ABIN7044849 and ABIN7044850), (5 µg) + goat-anti-rabbit-FITC.

Please check the [product details page](#) for more images. Overall 4 images are available for ABIN7043730.