

Datasheet for ABIN7043731

anti-SLC43A1 antibody (4th Extracellular Loop)**2** Images[Go to Product page](#)

Overview

Quantity:	0.2 mL
Target:	SLC43A1
Binding Specificity:	4th Extracellular Loop, AA 336-349
Reactivity:	Human, Mouse, Rat
Host:	Rabbit
Clonality:	Polyclonal
Conjugate:	This SLC43A1 antibody is un-conjugated
Application:	Western Blotting (WB)

Product Details

Immunogen:	Immunogen: Synthetic peptide
	Immunogen Sequence: (C)GKERETNEQRQKVE, corresponding to amino acid residues 336-349 of mouse LAT3 (SLC43A1)
Isotype:	IgG
Characteristics:	Anti-LAT3/SLC43A1 (extracellular) Antibody (ABIN7043731, ABIN7044859 and ABIN7044860)) is a highly specific antibody directed against an epitope of the mouse protein. The antibody can be used in western blot analysis. It has been designed to recognize SLC43A1 from human, rat, and mouse samples.
Purification:	Affinity purified on immobilized antigen.

Target Details

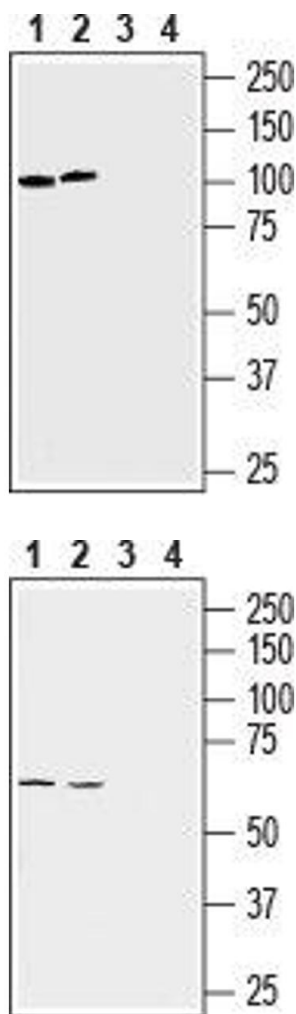
Target:	SLC43A1
Alternative Name:	LAT3/SLC43A1 (SLC43A1 Products)
Background:	Alternative names: Large neutral amino acids transporter small subunit 3, L-type amino acid transporter 3, Solute carrier family 43 member 1
Gene ID:	72401
NCBI Accession:	NM_003627
UniProt:	Q8BSM7

Application Details

Application Notes:	Optimal working dilution should be determined by the investigator.
Restrictions:	For Research Use only

Handling

Format:	Lyophilized
Reconstitution:	25 µL, 50 µL or 0.2 mL double distilled water (DDW), depending on the sample size.
Concentration:	0.8 mg/mL
Buffer:	Reconstituted antibody contains phosphate buffered saline (PBS), pH 7.4, 1 % BSA, 0.05 % Sodium azide.
Preservative:	Sodium azide
Precaution of Use:	This product contains Sodium azide: a POISONOUS AND HAZARDOUS SUBSTANCE which should be handled by trained staff only.
Storage:	RT, 4 °C, -20 °C
Storage Comment:	<p>Storage before reconstitution: The antibody ships as a lyophilized powder at room temperature. Upon arrival, it should be stored at -20°C.</p> <p>Storage after reconstitution: The reconstituted solution can be stored at 4°C for up to 1 week. For longer periods, small aliquots should be stored at -20°C. Avoid multiple freezing and thawing. Centrifuge all antibody preparations before use (10000 x g 5 min).</p>



Western Blotting

Image 1. Western blot analysis of human chronic myelogenous leukemia K562 (lanes 1 and 3) and human prostate carcinoma LN-CaP (lanes 2 and 4) cell lines lysates: - 1, 2. Anti-LAT3 (SLC43A1) (extracellular) Antibody (ABIN7043731, ABIN7044859 and ABIN7044860), (1:200). 3, 4. Anti-LAT3 (SLC43A1) (extracellular) Antibody, preincubated with LAT3/SLC43A1 (extracellular) Blocking Peptide (#BLP-NT193).

Western Blotting

Image 2. Western blot analysis of rat lung (lanes 1 and 3) and mouse lung (lanes 2 and 4) lysates: - 1, 2. Anti-LAT3/SLC43A1 (extracellular) Antibody (ABIN7043731, ABIN7044859 and ABIN7044860), (1:400). 3, 4. Anti-LAT3 (SLC43A1) (extracellular) Antibody, preincubated with LAT3/SLC43A1 (extracellular) Blocking Peptide (#BLP-NT193).