



[Go to Product page](#)

Datasheet for ABIN7043733

## anti-SLC47A2 antibody (6th Cytoplasmic Loop)

### 1 Image

#### Overview

Quantity:	25 µL
Target:	SLC47A2
Binding Specificity:	6th Cytoplasmic Loop, AA 481-496
Reactivity:	Mouse
Host:	Rabbit
Clonality:	Polyclonal
Conjugate:	This SLC47A2 antibody is un-conjugated
Application:	Western Blotting (WB)

#### Product Details

Immunogen:	Immunogen: Synthetic peptide Immunogen Sequence: (C)RAGLKSTKELIPTPAD, corresponding to amino acid residues 481-496 of mouse SLC47A2
Isotype:	IgG
Cross-Reactivity (Details):	Not recommended for use with human samples.
Characteristics:	Anti-SLC47A2 Antibody is directed against an epitope of mouse Multidrug and toxin extrusion protein 2 (MATE2, SLC47A2). Anti-SLC47A2 Antibody (ABIN7043733, ABIN7044843 and ABIN7044844) can be used in western blot analysis. It has been designed to recognize SLC47A2 from rat and mouse samples. The antibody will not recognize SLC47A2 from human samples.
Purification:	Affinity purified on immobilized antigen.

## Target Details

---

Target:	SLC47A2
Alternative Name:	SLC47A2 ( <a href="#">SLC47A2 Products</a> )
Background:	Alternative names: SLC47A2, MATE2, Multidrug and toxin extrusion protein 2, H <sup>+</sup> /organic cation antiporter kidney-specific
Gene ID:	380701
NCBI Accession:	<a href="#">NM_152908</a>
UniProt:	<a href="#">Q3V050</a>

## Application Details

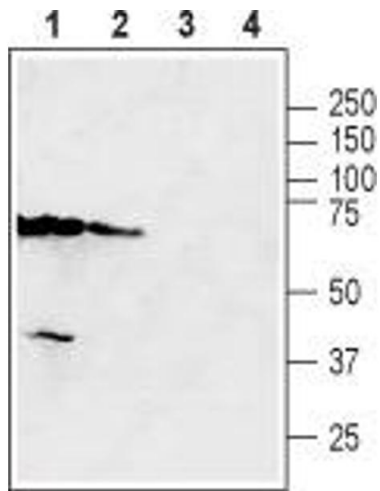
---

Application Notes:	Optimal working dilution should be determined by the investigator.
Restrictions:	For Research Use only

## Handling

---

Format:	Lyophilized
Reconstitution:	25 µL, 50 µL or 0.2 mL double distilled water (DDW), depending on the sample size.
Concentration:	0.85 mg/mL
Buffer:	Reconstituted antibody contains phosphate buffered saline (PBS), pH 7.4, 1 % BSA, 0.05 % Sodium azide.
Preservative:	Sodium azide
Precaution of Use:	This product contains Sodium azide: a POISONOUS AND HAZARDOUS SUBSTANCE which should be handled by trained staff only.
Storage:	RT, 4 °C, -20 °C
Storage Comment:	Storage before reconstitution: The antibody ships as a lyophilized powder at room temperature. Upon arrival, it should be stored at -20°C. Storage after reconstitution: The reconstituted solution can be stored at 4°C for up to 1 week. For longer periods, small aliquots should be stored at -20°C. Avoid multiple freezing and thawing. Centrifuge all antibody preparations before use (10000 x g 5 min).



### Western Blotting

**Image 1.** Western blot analysis of mouse kidney (lanes 1 and 3) and mouse testis (lanes 2 and 4) lysates: - 1,2. Anti-SLC47A2 Antibody (ABIN7043733, ABIN7044843 and ABIN7044844), (1:200).3,4. Anti-SLC47A2 Antibody, preincubated with SLC47A2 Blocking Peptide (#BLP-NT132).