

Datasheet for ABIN7043734
anti-SLC5A8 antibody (C-Term, Intracellular)

3 Images

[Go to Product page](#)

Overview

Quantity:	0.2 mL
Target:	SLC5A8
Binding Specificity:	AA 15-30, C-Term, Intracellular
Reactivity:	Human, Mouse, Rat
Host:	Rabbit
Clonality:	Polyclonal
Conjugate:	This SLC5A8 antibody is un-conjugated
Application:	Western Blotting (WB), Immunohistochemistry (IHC)

Product Details

Immunogen:	Immunogen: Synthetic peptide Immunogen Sequence: Peptide (C)NGSRAPDHDVTQERDE, corresponding to amino acid residues 15-30 of mouse beta-2-Adrenoceptor
Isotype:	IgG
Characteristics:	Anti-SMCT1 (SLC5A8) Antibody (ABIN7043734, ABIN7044495 and ABIN7044496)) is a highly specific antibody directed against an epitope of the human SLC5A8. The antibody can be used in western blot and immunohistochemistry applications. It has been designed to recognize SLC5A8 from mouse, rat and human samples.
Purification:	Affinity purified on immobilized antigen.

Target Details

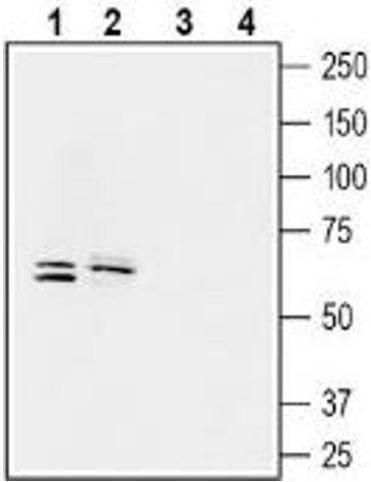
Target:	SLC5A8
Alternative Name:	SMCT1 (SLC5A8) (SLC5A8 Products)
Background:	Alternative names: Sodium-Coupled Monocarboxylate Transporter 1, Solute Carrier Family 5 Member 8, Apical Iodide Transporter, AIT
Gene ID:	43144
NCBI Accession:	NM_145913
UniProt:	Q8N695

Application Details

Application Notes:	Optimal working dilution should be determined by the investigator.
Restrictions:	For Research Use only

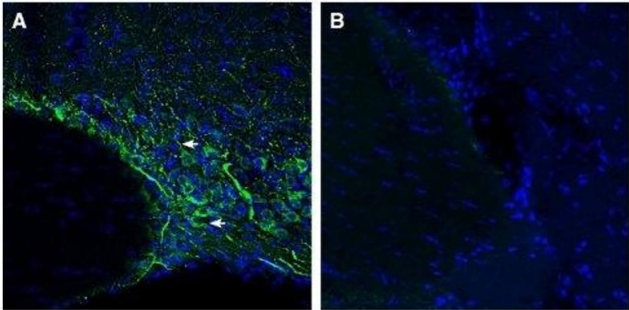
Handling

Format:	Lyophilized
Reconstitution:	25 µL, 50 µL or 0.2 mL double distilled water (DDW), depending on the sample size.
Concentration:	0.8 mg/mL
Buffer:	Reconstituted antibody contains phosphate buffered saline (PBS), pH 7.4, 1 % BSA, 0.05 % Sodium azide.
Preservative:	Sodium azide
Precaution of Use:	This product contains Sodium azide: a POISONOUS AND HAZARDOUS SUBSTANCE which should be handled by trained staff only.
Storage:	RT, 4 °C, -20 °C
Storage Comment:	<p>Storage before reconstitution: The antibody ships as a lyophilized powder at room temperature. Upon arrival, it should be stored at -20°C.</p> <p>Storage after reconstitution: The reconstituted solution can be stored at 4°C for up to 1 week. For longer periods, small aliquots should be stored at -20°C. Avoid multiple freezing and thawing. Centrifuge all antibody preparations before use (10000 x g 5 min).</p>



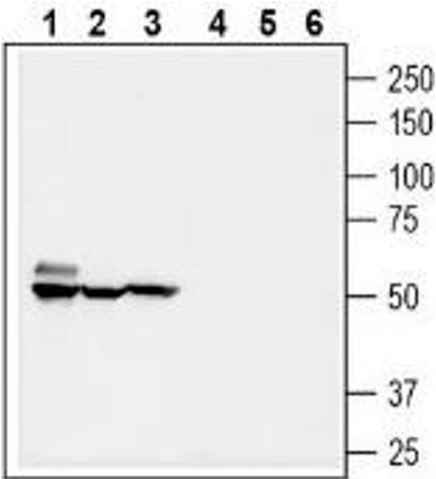
Western Blotting

Image 1. Western blot analysis of human LoVo colorectal adenocarcinoma cell line lysate (lanes 1 and 3) and human ARPE-19 retinal pigmented epithelium cell line lysate (2 and 4): - 1-2. Anti-SMCT1 (SLC5A8) Antibody (ABIN7043734, ABIN7044495 and ABIN7044496), (1:200). 3-4. Anti-SMCT1 (SLC5A8) Antibody, preincubated with SMCT1 (SLC5A8) Blocking Peptide (BLP-GT036).



Immunohistochemistry

Image 2. Expression of SMCT1 in rat supraoptic nucleus. - Immunohistochemical staining of perfusion-fixed frozen rat brain sections with Anti-SMCT1 (SLC5A8) Antibody (ABIN7043734, ABIN7044495 and ABIN7044496), (1:300), followed by goat anti-rabbit-AlexaFluor-488. A. SMCT1 immunoreactivity (green) was detected in neuronal profiles (arrows). B. Pre-incubation of the antibody with SMCT1 (SLC5A8) Blocking Peptide (BLP-GT036), suppressed staining. Cell nuclei are stained with DAPI (blue).



Western Blotting

Image 3. Western blot analysis of mouse brain lysate (lanes 1 and 4), rat kidney membranes (lanes 2 and 5) and mouse colon membranes (3 and 6): - 1-3. Anti-SMCT1 (SLC5A8) Antibody (ABIN7043734, ABIN7044495 and ABIN7044496), (1:200). 4-6. Anti-SMCT1 (SLC5A8) Antibody, preincubated with SMCT1 (SLC5A8) Blocking Peptide (BLP-GT036).