

Datasheet for ABIN7043735

anti-SLC5A1 antibody (Extracellular, N-Term)**3** Images[Go to Product page](#)

Overview

Quantity:	25 µL
Target:	SLC5A1
Binding Specificity:	AA 13-25, Extracellular, N-Term
Reactivity:	Mouse, Rat
Host:	Rabbit
Clonality:	Polyclonal
Conjugate:	This SLC5A1 antibody is un-conjugated
Application:	Western Blotting (WB), Immunohistochemistry (IHC), Immunofluorescence (IF)

Product Details

Immunogen:	Immunogen: Synthetic peptide
	Immunogen Sequence: (C)TDAPIQSYERIRN, corresponding to amino acid residues 13-25 of rat SGLT1
Isotype:	IgG
Cross-Reactivity (Details):	Not recommended for human samples.
Characteristics:	Anti-SGLT1 (extracellular) Antibody (ABIN7043735, ABIN7044491 and ABIN7044492)) is a highly specific antibody directed against an epitope of the rat sodium/glucose cotransporter 1. The antibody can be used in western blot and immunohistochemistry applications. It recognizes an extracellular epitope and is thus ideal for detecting the transporter in living cells. It has been designed to recognize SGLT1 from mouse and rat samples. The antibody is not recommended for use on human samples.

Product Details

Purification: Affinity purified on immobilized antigen.

Target Details

Target: SLC5A1

Alternative Name: SGLT1 ([SLC5A1 Products](#))

Background: Alternative names: SGLT1, Na⁺/glucose cotransporter 1, NAGT, High affinity sodium-glucose cotransporter, SLC5A1

Gene ID: 25552

NCBI Accession: [NM_000343](#)

Application Details

Application Notes: Optimal working dilution should be determined by the investigator.

Restrictions: For Research Use only

Handling

Format: Lyophilized

Reconstitution: 25 µL, 50 µL or 0.2 mL double distilled water (DDW), depending on the sample size.

Concentration: 0.8 mg/mL

Buffer: Reconstituted antibody contains phosphate buffered saline (PBS), pH 7.4, 1 % BSA, 0.05 % Sodium azide.

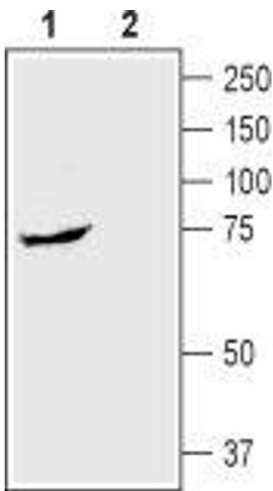
Preservative: Sodium azide

Precaution of Use: This product contains Sodium azide: a POISONOUS AND HAZARDOUS SUBSTANCE which should be handled by trained staff only.

Storage: RT, 4 °C, -20 °C

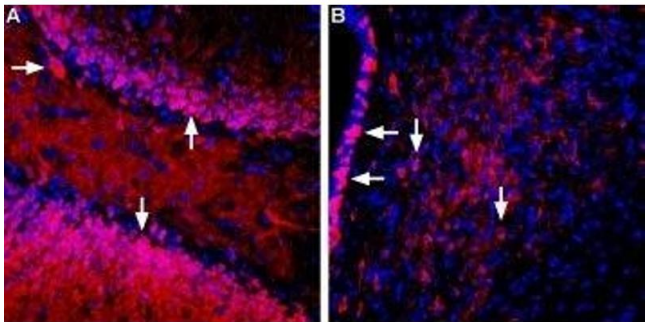
Storage Comment: Storage before reconstitution: The antibody ships as a lyophilized powder at room temperature. Upon arrival, it should be stored at -20°C.

Storage after reconstitution: The reconstituted solution can be stored at 4°C for up to 1 week. For longer periods, small aliquots should be stored at -20°C. Avoid multiple freezing and thawing. Centrifuge all antibody preparations before use (10000 x g 5 min).



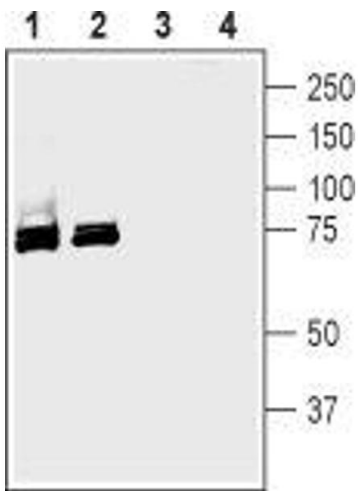
Western Blotting

Image 1. Western blot analysis of rat small intestine lysate: - 1. Anti-SGLT1 (extracellular) Antibody (ABIN7043735, ABIN7044491 and ABIN7044492), (1:200). 2. Anti-SGLT1 (extracellular) Antibody, preincubated with SGLT1 (extracellular) Blocking Peptide (#BLP-GT031).



Immunohistochemistry

Image 2. Expression of SGLT1 in rat brain sections - Immunohistochemical staining of perfusion-fixed frozen rat brain sections using Anti-SGLT1 (extracellular) Antibody (ABIN7043735, ABIN7044491 and ABIN7044492), (1:400). A. SGLT1 staining in the hippocampal dentate gyrus reveals labeling of cells (red) in the granule layer (vertical arrows) and in hilar neurons (horizontal arrow). B. SGLT1 staining in the rat hypothalamic paraventricular nucleus region (in red), appears in cells lining the wall of the third ventricle (horizontal arrows) and in neurons of the paraventricular nucleus (vertical arrows). Cell nuclei are stained with DAPI (blue).



Western Blotting

Image 3. Western blot analysis of rat (lanes 1 and 3) and mouse (lanes 2 and 4) brain membranes: - 1,2. Anti-SGLT1 (extracellular) Antibody (ABIN7043735, ABIN7044491 and ABIN7044492), (1:200). 3,4. Anti-SGLT1 (extracellular) Antibody, preincubated with SGLT1 (extracellular) Blocking Peptide (#BLP-GT031).