

Datasheet for ABIN7043737

**anti-Slc6a14 antibody (2nd Extracellular Loop)**

## 4 Images

[Go to Product page](#)

## Overview

Quantity:	50 µL
Target:	Slc6a14
Binding Specificity:	2nd Extracellular Loop, AA 213-226
Reactivity:	Human, Rat, Mouse
Host:	Rabbit
Clonality:	Polyclonal
Conjugate:	This Slc6a14 antibody is un-conjugated
Application:	Western Blotting (WB), Immunohistochemistry (IHC), Immunofluorescence (IF)

## Product Details

Immunogen:	Immunogen: Synthetic peptide Immunogen Sequence: (C)PSEQYWNKVALQRS, corresponding to amino acid residues 213-226 of human SLC6A14
Isotype:	IgG
Characteristics:	Anti-SLC6A14 (extracellular) Antibody (ABIN7043737, ABIN7044477 and ABIN7044478)) is a highly specific antibody directed against an epitope of the human protein. The antibody can be used in western blot and immunohistochemistry applications. It has been designed to recognize SLC6A14 from rat, mouse, and human samples.
Purification:	Affinity purified on immobilized antigen.

## Target Details

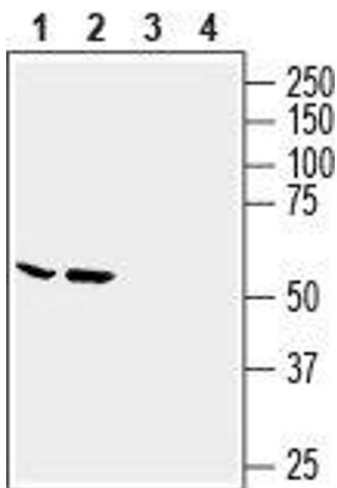
Target:	Slc6a14
Alternative Name:	SLC6A14 ( <a href="#">Slc6a14 Products</a> )
Background:	Alternative names: SLC6A14, Sodium and chloride-dependent neutral and basic amino acid transporter B(0+), Amino acid transporter ATB0+, Solute carrier family 6 member 14
Gene ID:	11254
NCBI Accession:	<a href="#">NM_007231</a>
UniProt:	<a href="#">Q9UN76</a>

## Application Details

Application Notes:	Optimal working dilution should be determined by the investigator.
Restrictions:	For Research Use only

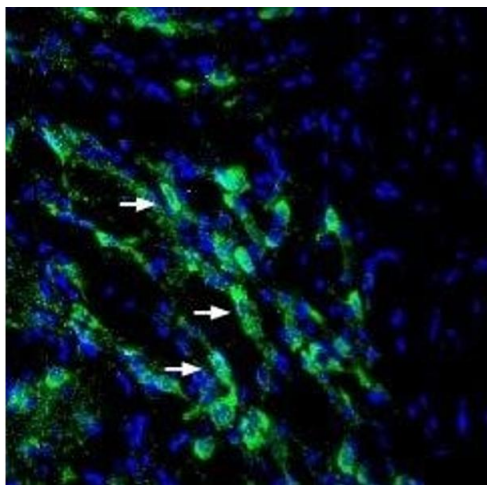
## Handling

Format:	Lyophilized
Reconstitution:	25 µL, 50 µL or 0.2 mL double distilled water (DDW), depending on the sample size.
Concentration:	0.8 mg/mL
Buffer:	Reconstituted antibody contains phosphate buffered saline (PBS), pH 7.4, 1 % BSA, 0.05 % Sodium azide.
Preservative:	Sodium azide
Precaution of Use:	This product contains Sodium azide: a POISONOUS AND HAZARDOUS SUBSTANCE which should be handled by trained staff only.
Storage:	RT, 4 °C, -20 °C
Storage Comment:	<p>Storage before reconstitution: The antibody ships as a lyophilized powder at room temperature. Upon arrival, it should be stored at -20°C.</p> <p>Storage after reconstitution: The reconstituted solution can be stored at 4°C for up to 1 week. For longer periods, small aliquots should be stored at -20°C. Avoid multiple freezing and thawing. Centrifuge all antibody preparations before use (10000 x g 5 min).</p>



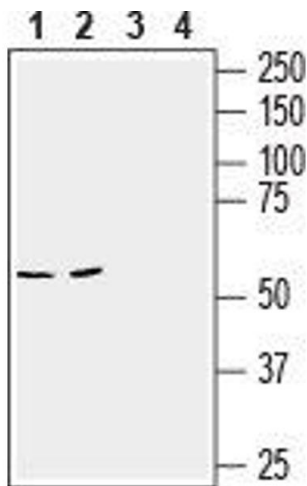
#### Western Blotting

**Image 1.** Western blot analysis of human MCF-7 breast adenocarcinoma cell line (lanes 1 and 3) and human LNCaP prostate adenocarcinoma cell line (lanes 2 and 4) lysates: - 1,2. Anti-SLC6A14 (extracellular) Antibody (ABIN7043737, ABIN7044477 and ABIN7044478), (1:200).3,4. Anti-SLC6A14 (extracellular) Antibody, preincubated with SLC6A14 (extracellular) Blocking Peptide (#BLP-GT015).



#### Immunohistochemistry

**Image 2.** Expression of SLC6A14 in mouse RTN - Immunohistochemical staining of perfusion-fixed frozen mouse brain sections with Anti-SLC6A14 (extracellular) Antibody (ABIN7043737, ABIN7044477 and ABIN7044478), (1:200), followed by goat-anti-rabbit-AlexaFluor-488. SLC6A14 immunoreactivity (green) is detected in reticular thalamic nucleus (RTN) cells (arrows). Cell nuclei are stained with DAPI (blue).



#### Western Blotting

**Image 3.** Western blot analysis of mouse brain (lanes 1 and 3) and colon (lanes 2 and 4) lysates: - 1,2. Anti-SLC6A14 (extracellular) Antibody (ABIN7043737, ABIN7044477 and ABIN7044478), (1:200).3,4. Anti-SLC6A14 (extracellular) Antibody, preincubated with SLC6A14 (extracellular) Blocking Peptide (#BLP-GT015).

Please check the [product details page](#) for more images. Overall 4 images are available for ABIN7043737.