



Datasheet for ABIN7043738

anti-SLC6A12 antibody (Intracellular, N-Term)



[Go to Product page](#)

2 Images

Overview

Quantity:	25 µL
Target:	SLC6A12
Binding Specificity:	AA 22-35, Intracellular, N-Term
Reactivity:	Rat, Mouse
Host:	Rabbit
Clonality:	Polyclonal
Conjugate:	This SLC6A12 antibody is un-conjugated
Application:	Western Blotting (WB)

Product Details

Immunogen:	Immunogen: Synthetic peptide Immunogen Sequence: (C)GEMMDQKDKDQVKD, corresponding to amino acid residues 22-35 of rat Betaine/GABA Transporter 1
Isotype:	IgG
Cross-Reactivity (Details):	Not recommended for human samples.
Characteristics:	Anti-BGT-1 (SLC6A12) Antibody (ABIN7043738, ABIN7044465 and ABIN7044466) is a highly specific antibody directed against an epitope of the rat Betaine/GABA transporter 1. The antibody can be used in western blot analysis. It has been designed to recognize BGT-1 from mouse and rat samples. The antibody is unlikely to recognize the protein from human samples.
Purification:	Affinity purified on immobilized antigen.

Target Details

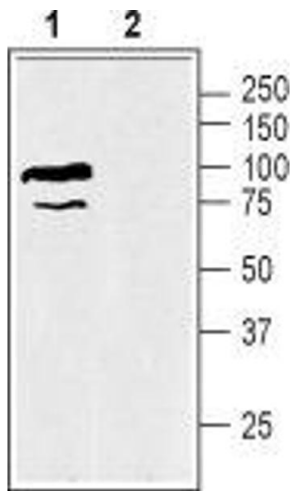
Target:	SLC6A12
Alternative Name:	BGT-1 (SLC6A12) (SLC6A12 Products)
Background:	Alternative names: BGT-1 (SLC6A12), Betaine/GABA transporter 1, Na ⁺ /Cl ⁻ -dependent betaine/GABA transporter
Gene ID:	50676
NCBI Accession:	NM_003044
UniProt:	P48056

Application Details

Application Notes:	Optimal working dilution should be determined by the investigator.
Restrictions:	For Research Use only

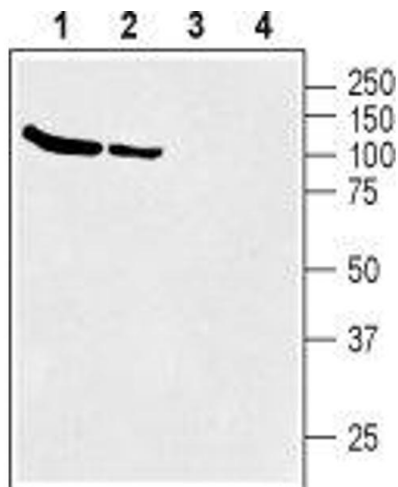
Handling

Format:	Lyophilized
Reconstitution:	25 µL, 50 µL or 0.2 mL double distilled water (DDW), depending on the sample size.
Concentration:	0.8 mg/mL
Buffer:	Reconstituted antibody contains phosphate buffered saline (PBS), pH 7.4, 1 % BSA, 0.05 % Sodium azide.
Preservative:	Sodium azide
Precaution of Use:	This product contains Sodium azide: a POISONOUS AND HAZARDOUS SUBSTANCE which should be handled by trained staff only.
Storage:	RT, 4 °C, -20 °C
Storage Comment:	<p>Storage before reconstitution: The antibody ships as a lyophilized powder at room temperature. Upon arrival, it should be stored at -20°C.</p> <p>Storage after reconstitution: The reconstituted solution can be stored at 4°C for up to 1 week. For longer periods, small aliquots should be stored at -20°C. Avoid multiple freezing and thawing. Centrifuge all antibody preparations before use (10000 x g 5 min).</p>



Western Blotting

Image 1. Western blot analysis of mouse kidney membranes: - 1. Anti-BGT-1 (SLC6A12) Antibody (ABIN7043738, ABIN7044465 and ABIN7044466), (1:200).2. Anti-BGT-1 (SLC6A12) Antibody, preincubated with BGT-1/SLC6A12 Blocking Peptide (#BLP-GT004).



Western Blotting

Image 2. Western blot analysis of rat (lanes 1 and 3) and mouse (lanes 2 and 4) brain membranes: - 1,2. Anti-BGT-1 (SLC6A12) Antibody (ABIN7043738, ABIN7044465 and ABIN7044466), (1:200).3,4. Anti-BGT-1 (SLC6A12) Antibody, preincubated with BGT-1/SLC6A12 Blocking Peptide (#BLP-GT004).