

Datasheet for ABIN7043739

anti-SLC6A8 antibody (C-Term, Extracellular)

3 Images

[Go to Product page](#)

Overview

Quantity:	50 µL
Target:	SLC6A8
Binding Specificity:	AA 46-60, C-Term, Extracellular
Reactivity:	Human, Mouse, Rat
Host:	Rabbit
Clonality:	Polyclonal
Conjugate:	This SLC6A8 antibody is un-conjugated
Application:	Western Blotting (WB), Immunohistochemistry (IHC), Immunofluorescence (IF)

Product Details

Immunogen:	Immunogen: Synthetic peptide
	Immunogen Sequence: (C)RLAVPPRETWTRQMD, corresponding to amino acid residues 46-60 of rat creatine transporter
Isotype:	IgG
Characteristics:	Anti-SLC6A8 Antibody (ABIN7043739, ABIN7044471 and ABIN7044472)) is a highly specific antibody directed against an epitope of the rat Creatine transporter. The antibody can be used in western blot and immunohistochemistry applications. It has been designed to recognize SLC6A8 from rat, mouse, and human samples.
Purification:	Affinity purified on immobilized antigen.

Target Details

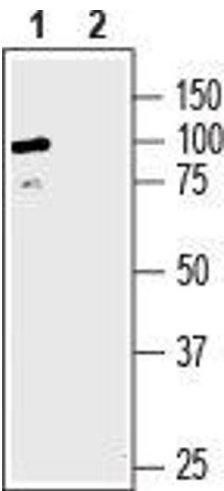
Target:	SLC6A8
Alternative Name:	SLC6A8 (SLC6A8 Products)
Background:	Alternative names: SLC6A8, Creatine transporter, Sodium- and chloride-dependent creatine transporter 1, CT1, CRT, CHOT1
Gene ID:	50690
NCBI Accession:	NM_001142805
UniProt:	P28570
Pathways:	Retinoic Acid Receptor Signaling Pathway , Intracellular Steroid Hormone Receptor Signaling Pathway , Regulation of Intracellular Steroid Hormone Receptor Signaling , Nuclear Hormone Receptor Binding , ER-Nucleus Signaling , Unfolded Protein Response

Application Details

Application Notes:	Optimal working dilution should be determined by the investigator.
Restrictions:	For Research Use only

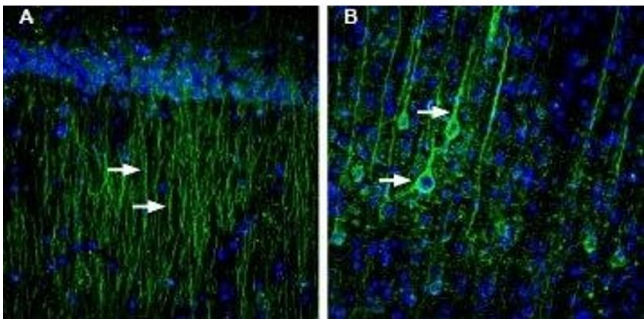
Handling

Format:	Lyophilized
Reconstitution:	25 µL, 50 µL or 0.2 mL double distilled water (DDW), depending on the sample size.
Concentration:	0.8 mg/mL
Buffer:	Reconstituted antibody contains phosphate buffered saline (PBS), pH 7.4, 1 % BSA, 0.05 % Sodium azide.
Preservative:	Sodium azide
Precaution of Use:	This product contains Sodium azide: a POISONOUS AND HAZARDOUS SUBSTANCE which should be handled by trained staff only.
Storage:	RT, 4 °C, -20 °C
Storage Comment:	<p>Storage before reconstitution: The antibody ships as a lyophilized powder at room temperature. Upon arrival, it should be stored at -20°C.</p> <p>Storage after reconstitution: The reconstituted solution can be stored at 4°C for up to 1 week. For longer periods, small aliquots should be stored at -20°C. Avoid multiple freezing and thawing. Centrifuge all antibody preparations before use (10000 x g 5 min).</p>



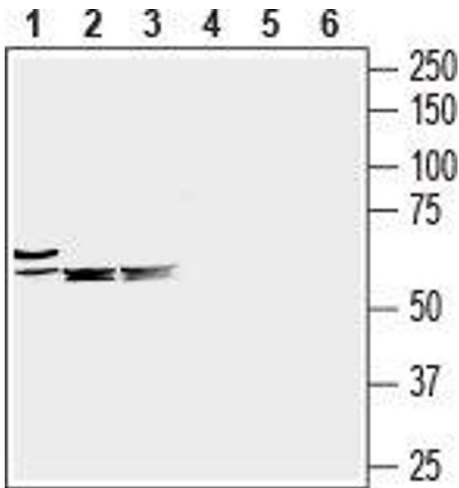
Western Blotting

Image 1. Western blot analysis of human HepG2 liver hepatocellular carcinoma: - 1. Anti-SLC6A8 Antibody (ABIN7043739, ABIN7044471 and ABIN7044472), (1:200).2. Anti-SLC6A8 Antibody, preincubated with SLC6A8 Blocking Peptide (#BLP-GT008).



Immunohistochemistry

Image 2. Expression of creatine transporter in rat hippocampus and cortex - Immunohistochemical staining of perfusion-fixed frozen rat brain sections with Anti-SLC6A8 Antibody (ABIN7043739, ABIN7044471 and ABIN7044472), (1:200), followed by goat anti-rabbit-AlexaFluor-488. A. Creatine transporter staining (green) in the hippocampal CA1 region is detected in apical dendrites (arrows). B. Creatine transporter immunoreactivity (green) in cortex is observed in soma and apical dendrites of neurons (arrows). Cell nuclei are stained with DAPI (blue).



Western Blotting

Image 3. Western blot analysis of mouse heart (lanes 1 and 4), mouse brain (lanes 2 and 5) and rat brain (lanes 3 and 6) lysates: - 1-3. Anti-SLC6A8 Antibody (ABIN7043739, ABIN7044471 and ABIN7044472), (1:200).4-6. Anti-SLC6A8 Antibody, preincubated with SLC6A8 Blocking Peptide (#BLP-GT008).