

Datasheet for ABIN7043740

anti-SLC6A3 antibody (2nd Extracellular Loop)**3** Images[Go to Product page](#)

Overview

Quantity:	25 µL
Target:	SLC6A3
Binding Specificity:	2nd Extracellular Loop, AA 191-205
Reactivity:	Rat, Mouse
Host:	Rabbit
Clonality:	Polyclonal
Conjugate:	This SLC6A3 antibody is un-conjugated
Application:	Western Blotting (WB), Immunohistochemistry (IHC), Immunocytochemistry (ICC), Immunofluorescence (IF), Live Cell Imaging (LCI)

Product Details

Immunogen:	Immunogen: Synthetic peptide Immunogen Sequence: (C)DAHASNSSDGLGLND, corresponding to amino acids residues 191-205 of rat DAT
Isotype:	IgG
Cross-Reactivity (Details):	Not recommended for use with human samples.
Characteristics:	Anti-Dopamine Transporter (DAT) (extracellular) Antibody (ABIN7043740, ABIN7044606 and ABIN7044607)) is a highly specific antibody directed against an epitope of the rat protein. The antibody can be used in western blot, immunohistochemistry, and live cell imaging applications. It has been designed to recognize DAT from mouse and rat samples. The antibody is unlikely to recognize DAT from human samples.

Product Details

Purification: Affinity purified on immobilized antigen.

Target Details

Target: SLC6A3

Alternative Name: Dopamine Transporter (DAT) ([SLC6A3 Products](#))

Background: Alternative names: Dopamine Transporter (DAT), Sodium-dependent dopamine transporter, DA transporter, SLC6A3

Gene ID: 24898

NCBI Accession: [NM_001044](#)

UniProt: [P23977](#)

Pathways: [Dopaminergic Neurogenesis](#)

Application Details

Application Notes: Optimal working dilution should be determined by the investigator.

Restrictions: For Research Use only

Handling

Format: Lyophilized

Reconstitution: 25 µL, 50 µL or 0.2 mL double distilled water (DDW), depending on the sample size.

Concentration: 0.8 mg/mL

Buffer: Reconstituted antibody contains phosphate buffered saline (PBS), pH 7.4, 1 % BSA, 0.05 % Sodium azide.

Preservative: Sodium azide

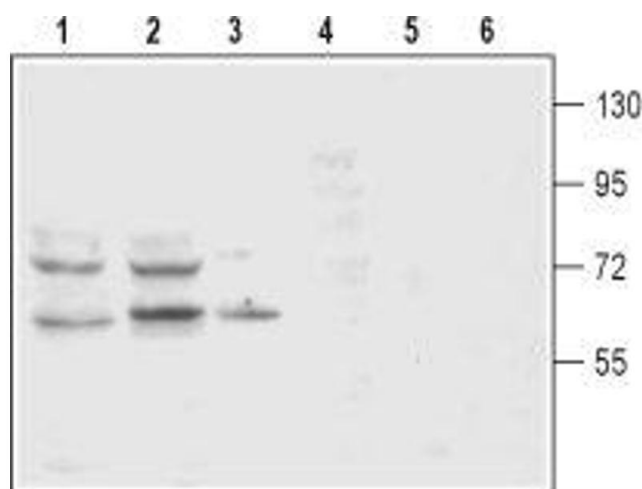
Precaution of Use: This product contains Sodium azide: a POISONOUS AND HAZARDOUS SUBSTANCE which should be handled by trained staff only.

Storage: RT, 4 °C, -20 °C

Storage Comment: Storage before reconstitution: The antibody ships as a lyophilized powder at room temperature. Upon arrival, it should be stored at -20°C.
Storage after reconstitution: The reconstituted solution can be stored at 4°C for up to 1 week. For longer periods, small aliquots should be stored at -20°C. Avoid multiple freezing and

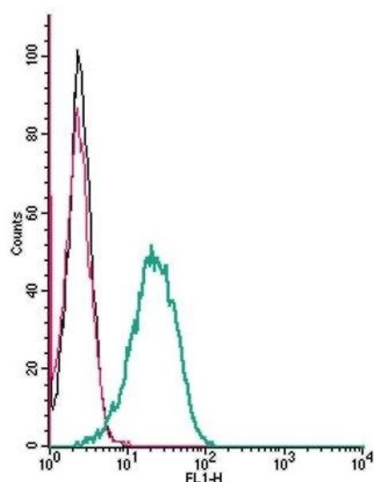
thawing. Centrifuge all antibody preparations before use (10000 x g 5 min).

Images



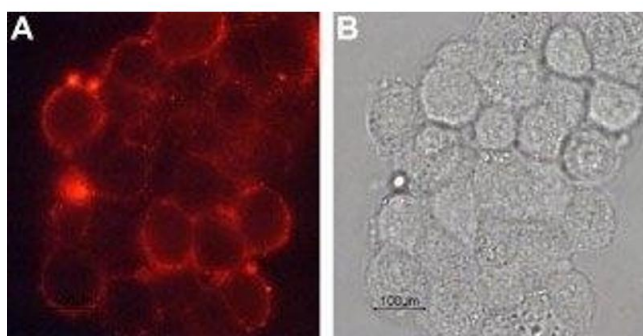
Western Blotting

Image 1. Western blot analysis of rat (lanes 1 and 4) and mouse (lanes 2 and 5) brain membranes and rat pheochromocytoma PC12 (lanes 3 and 6) cell lysates: - 1-3. Anti-Dopamine Transporter (DAT) (extracellular) Antibody (ABIN7043740, ABIN7044606 and ABIN7044607), (1:200). 4-6. Anti-Dopamine Transporter (DAT) (extracellular) Antibody, preincubated with Dopamine Transporter/DAT (extracellular) Blocking Peptide (#BLP-MT003).



Flow Cytometry

Image 2. Cell surface detection of DAT by indirect flow cytometry in live intact mouse J774 macrophage cells: (black line) Cells. (red line) Cells + goat-anti-rabbit-FITC. (green line) Cells + Anti-Dopamine Transporter (DAT) (extracellular) Antibody (ABIN7043740, ABIN7044606 and ABIN7044607), (2.5 µg) + goat-anti-rabbit-FITC.



Immunocytochemistry

Image 3. Expression of DAT in rat PC12 cells - Cell surface detection of DAT in live intact rat pheochromocytoma PC12 cells. A. Cells stained with Anti-Dopamine Transporter (DAT) (extracellular) Antibody (ABIN7043740, ABIN7044606 and ABIN7044607), (1:100), followed by goat anti-rabbit-AlexaFluor- 594 secondary antibody (red). B. Live view of the cells.