

Datasheet for ABIN7043744

## anti-SLC6A7 antibody (C-Term, Intracellular)



[Go to Product page](#)

### 1 Image

#### Overview

Quantity:	25 µL
Target:	SLC6A7
Binding Specificity:	AA 602-615, C-Term, Intracellular
Reactivity:	Human, Rat, Mouse
Host:	Rabbit
Clonality:	Polyclonal
Conjugate:	This SLC6A7 antibody is un-conjugated
Application:	Western Blotting (WB)

#### Product Details

Immunogen:	Immunogen: Synthetic peptide Immunogen Sequence: (C)KPLMVHMRKYGGIT, corresponding to amino acid residues 602-615 of rat SLC6A7
Isotype:	IgG
Characteristics:	Anti-SLC6A7 (Proline Transporter) Antibody is directed against an epitope of the rat Proline transporter. Anti-SLC6A7 (Proline Transporter) Antibody (ABIN7043744, ABIN7044475 and ABIN7044476)) can be used in western blot analysis. It has been designed to recognize PROT from human, rat and mouse samples.
Purification:	Affinity purified on immobilized antigen.

## Target Details

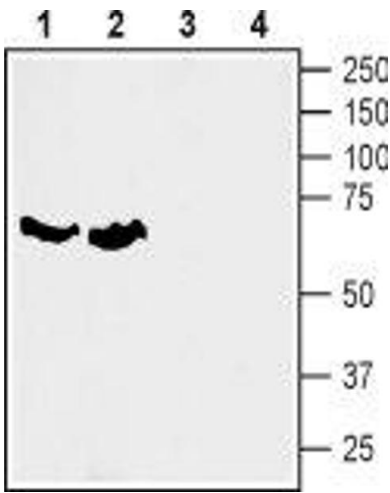
Target:	SLC6A7
Alternative Name:	SLC6A7 (Proline Transporter) ( <a href="#">SLC6A7 Products</a> )
Background:	Alternative names: SLC6A7 (Proline Transporter), Sodium-dependent proline transporter, Brain-specific L-proline transporter, PROT
Gene ID:	117100
NCBI Accession:	<a href="#">NM_014228</a>
UniProt:	<a href="#">P28573</a>

## Application Details

Application Notes:	Optimal working dilution should be determined by the investigator.
Restrictions:	For Research Use only

## Handling

Format:	Lyophilized
Reconstitution:	25 µL, 50 µL or 0.2 mL double distilled water (DDW), depending on the sample size.
Concentration:	0.8 mg/mL
Buffer:	Reconstituted antibody contains phosphate buffered saline (PBS), pH 7.4, 1 % BSA, 0.05 % Sodium azide.
Preservative:	Sodium azide
Precaution of Use:	This product contains Sodium azide: a POISONOUS AND HAZARDOUS SUBSTANCE which should be handled by trained staff only.
Storage:	RT, 4 °C, -20 °C
Storage Comment:	<p>Storage before reconstitution: The antibody ships as a lyophilized powder at room temperature. Upon arrival, it should be stored at -20°C.</p> <p>Storage after reconstitution: The reconstituted solution can be stored at 4°C for up to 1 week. For longer periods, small aliquots should be stored at -20°C. Avoid multiple freezing and thawing. Centrifuge all antibody preparations before use (10000 x g 5 min).</p>



Western Blotting

**Image 1.** Western blot analysis of rat (lanes 1 and 3) and mouse (lanes 2 and 4) brain membranes: - 1,2. Anti-SLC6A7 (Proline Transporter) Antibody (ABIN7043744, ABIN7044475 and ABIN7044476), (1:400).3,4. Anti-SLC6A7 (Proline Transporter) Antibody, preincubated with SLC6A7/Proline Transporter Blocking Peptide (#BLP-GT013).