

Datasheet for ABIN7043746

anti-SLC6A4 antibody (4th Extracellular Loop) (FITC)



[Go to Product page](#)

2 Images

Overview

Quantity:	50 µL
Target:	SLC6A4
Binding Specificity:	4th Extracellular Loop, AA 388-400
Reactivity:	Human, Rat, Mouse
Host:	Rabbit
Clonality:	Polyclonal
Conjugate:	This SLC6A4 antibody is conjugated to FITC
Application:	Flow Cytometry (FACS)

Product Details

Immunogen:	<p>Immunogen: Synthetic peptide</p> <p>Immunogen Sequence: (C)EMRNEDVSEVAKD, corresponding to amino acids residues 388-400 of rat SERT</p>
Isotype:	IgG
Characteristics:	<p>Anti-Serotonin Transporter (SERT) (extracellular) Antibody (ABIN7043745, ABIN7044608 and ABIN7044609)) is a highly specific antibody directed against an epitope of the rat protein. The antibody can be used in western blot, immunohistochemistry, immunocytochemistry, indirect flow cytometry, and live cell imaging applications. It has been designed to recognize SERT from human, mouse, and rat samples.</p> <p>Anti-Serotonin Transporter (SERT) (extracellular)-FITC Antibody (ABIN7043745, ABIN7044608 and ABIN7044609)-F) is directly conjugated to fluorescein isothiocyanate (FITC). The antibody can be used in immunofluorescent applications such as direct live cell flow cytometry.</p>

Product Details

Purification: Affinity purified on immobilized antigen.

Target Details

Target: SLC6A4

Alternative Name: Serotonin Transporter (SERT) ([SLC6A4 Products](#))

Background: Alternative names: Serotonin Transporter (SERT), Sodium-dependent serotonin transporter, 5-HT transporter, 5-HTT, 5-HTTLPR, SLC6A4

Gene ID: 25553

NCBI Accession: [NM_001045](#)

UniProt: [P31652](#)

Application Details

Application Notes: Optimal working dilution should be determined by the investigator.

Restrictions: For Research Use only

Handling

Format: Lyophilized

Reconstitution: 50 µL double distilled water (DDW).

Concentration: 1 mg/mL

Buffer: Reconstituted antibody contains phosphate buffered saline (PBS), pH 7.4, 1 % BSA, 0.05 % Sodium azide.

Preservative: Sodium azide

Precaution of Use: This product contains Sodium azide: a POISONOUS AND HAZARDOUS SUBSTANCE which should be handled by trained staff only.

Storage: RT, 4 °C, -20 °C

Storage Comment: Storage before reconstitution: The antibody ships as a lyophilized powder at room temperature. Upon arrival, it should be stored at -20°C.
Storage after reconstitution: The reconstituted solution can be stored at 4°C, protected from the light, for up to 1 week. For longer periods, small aliquots should be stored at -20°C. Avoid multiple freezing and thawing. Centrifuge all antibody preparations before use (10000 x g 5

min).

Images

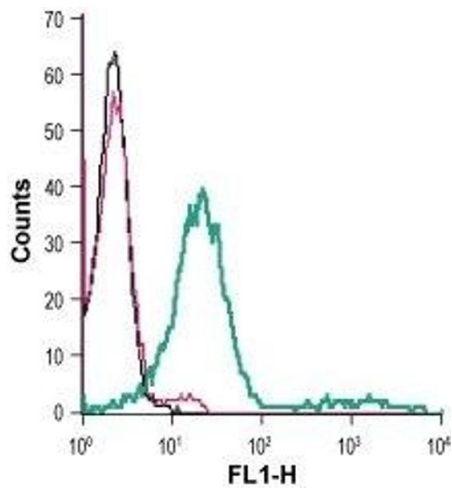
**Flow Cytometry**

Image 1. Cell surface detection of SERT in live intact mouse P815 mastocytoma cells: (black line) Cells.(red line) Cells + Rabbit IgG isotype control-FITC. (green line) Cells + Anti-Serotonin Transporter (SERT) (extracellular)-FITC Antibody (ABIN7043746, ABIN7045584, ABIN7045585 and ABIN7045586), (5 µg).

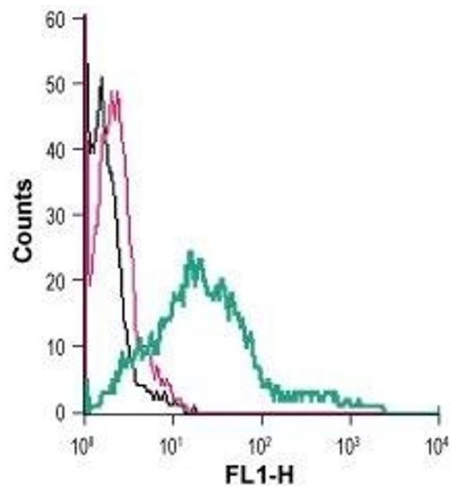
**Flow Cytometry**

Image 2. Cell surface detection of SERT in live intact human MEG-01 megakaryoblastic leukemia cells: (black line) Cells.(red line) Cells + Rabbit IgG isotype control-FITC. (green line) Cells + Anti-Serotonin Transporter (SERT) (extracellular)-FITC Antibody (ABIN7043746, ABIN7045584, ABIN7045585 and ABIN7045586), (5 µg).