

Datasheet for ABIN7043747

anti-SLC6A15 antibody (C-Term, Intracellular)



[Go to Product page](#)

4 Images

Overview

Quantity:	0.2 mL
Target:	SLC6A15
Binding Specificity:	AA 691-705, C-Term, Intracellular
Reactivity:	Human, Mouse, Rat
Host:	Rabbit
Clonality:	Polyclonal
Conjugate:	This SLC6A15 antibody is un-conjugated
Application:	Western Blotting (WB), Immunohistochemistry (IHC)

Product Details

Immunogen:	Immunogen: Synthetic peptide Immunogen Sequence: (C)GKNIYRKQSGSPTLD corresponding to amino acid residues 691 - 705 of mouse SLC6A15
Isotype:	IgG
Characteristics:	Anti-SLC6A15 Antibody (ABIN7043747, ABIN7044479 and ABIN7044480)) is a highly specific antibody directed against an intracellular epitope of the mouse SLC6A15. The antibody can be used in western blot and immunohistochemistry. It has been designed to recognize SLC6A15 from mouse, rat and human samples.
Purification:	Affinity purified on immobilized antigen.

Target Details

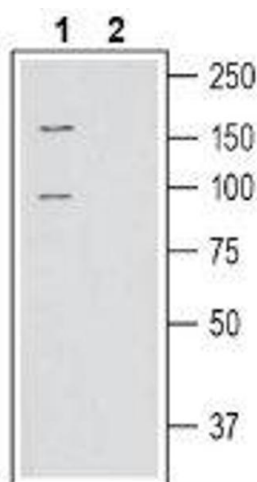
Target:	SLC6A15
Alternative Name:	SLC6A15 (SLC6A15 Products)
Background:	Alternative names: Solute carrier family 6 member 15, Sodium-dependent neutral amino acid transporter B(0)AT2, Sodium-and chloride-dependent neurotransmitter transporter NTT73, NTT73, B0AT2
Gene ID:	42417
UniProt:	Q9H2J7

Application Details

Application Notes:	Optimal working dilution should be determined by the investigator.
Restrictions:	For Research Use only

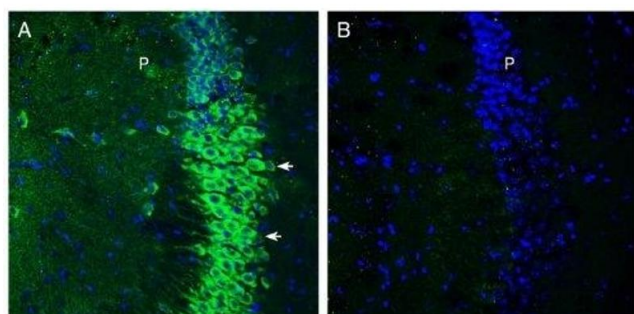
Handling

Format:	Lyophilized
Reconstitution:	25 µL, 50 µL or 0.2 mL double distilled water (DDW), depending on the sample size.
Concentration:	0.8 mg/mL
Buffer:	Reconstituted antibody contains phosphate buffered saline (PBS), pH 7.4, 1 % BSA, 0.05 % Sodium azide.
Preservative:	Sodium azide
Precaution of Use:	This product contains Sodium azide: a POISONOUS AND HAZARDOUS SUBSTANCE which should be handled by trained staff only.
Storage:	RT,4 °C,-20 °C
Storage Comment:	<p>Storage before reconstitution: The antibody ships as a lyophilized powder at room temperature. Upon arrival, it should be stored at -20°C.</p> <p>Storage after reconstitution: The reconstituted solution can be stored at 4°C for up to 1 week. For longer periods, small aliquots should be stored at -20°C. Avoid multiple freezing and thawing. Centrifuge all antibody preparations before use (10000 x g 5 min).</p>



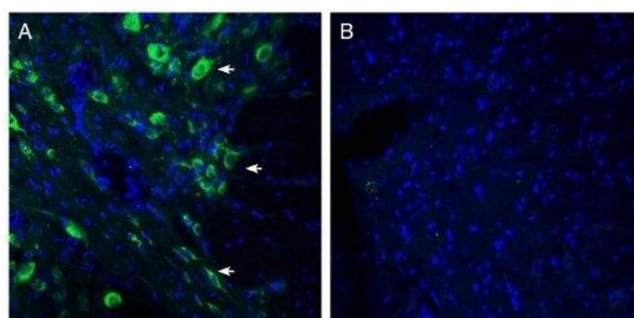
Western Blotting

Image 1. Western blot analysis of human SH-SY5Y neuroblastoma cell line lysate: - 1. Anti-SLC6A15 Antibody (ABIN7043747, ABIN7044479 and ABIN7044480), (1:200). 2. Anti-SLC6A15 Antibody, preincubated with SLC6A15 Blocking Peptide (BLP-GT016).



Immunohistochemistry

Image 2. Expression of SLC6A15 in mouse hippocampus. - Immunohistochemical staining of perfusion-fixed frozen mouse brain sections with Anti-SLC6A15 Antibody (ABIN7043747, ABIN7044479 and ABIN7044480), (1:300), followed by goat anti-rabbit-AlexaFluor-488. A. Staining in the mouse hippocampal CA3 region, showed SLC6A15 immunoreactivity (green) in neuronal profiles in the pyramidal layer (P, horizontal arrows). B. Pre-incubation of the antibody with SLC6A15 Blocking Peptide (BLP-GT016), suppressed staining. Cell nuclei are stained with DAPI (blue).



Immunohistochemistry

Image 3. Expression of SLC6A15 in rat dorsal Raphe nucleus. - Immunohistochemical staining of perfusion-fixed frozen rat brain sections with Anti-SLC6A15 Antibody (ABIN7043747, ABIN7044479 and ABIN7044480), (1:300), followed by goat anti-rabbit-AlexaFluor-488. A. SLC6A15 immunoreactivity (green) appears in neuronal profiles (arrows). B. Pre-incubation of the antibody with SLC6A15 Blocking Peptide (BLP-GT016), suppressed staining. Cell nuclei are stained with DAPI (blue).

Please check the [product details page](#) for more images. Overall 4 images are available for ABIN7043747.