

Datasheet for ABIN7043749

anti-SLC7A2 antibody (2nd Extracellular Loop) (FITC)**2** Images[Go to Product page](#)

Overview

Quantity:	50 µL
Target:	SLC7A2
Binding Specificity:	2nd Extracellular Loop, AA 151-163
Reactivity:	Human, Mouse, Rat
Host:	Rabbit
Clonality:	Polyclonal
Conjugate:	This SLC7A2 antibody is conjugated to FITC
Application:	Flow Cytometry (FACS)

Product Details

Immunogen:	Immunogen: Synthetic peptide Immunogen Sequence: (C)KTYFKMNYTGLAE, corresponding to amino acid residues 151-163 of rat SLC7A2
Isotype:	IgG
Characteristics:	Anti-SLC7A2 (extracellular) Antibody (ABIN7043748, ABIN7044831 and ABIN7044832)) is a highly specific antibody directed against an epitope of the rat protein. The antibody can be used in western blot analysis. It recognizes an extracellular epitope and can potentially detect the protein in living cells. It has been designed to recognize Cationic amino acid transporter 2 from mouse, rat, and human samples. \nAnti-SLC7A2 (extracellular)-FITC Antibody (ABIN7043748, ABIN7044831 and ABIN7044832)-F) is directly conjugated to fluorescein isothiocyanate (FITC). This labeled antibody can be used in immunofluorescent applications such as direct live cell flow cytometry.

Product Details

Purification: Affinity purified on immobilized antigen.

Target Details

Target: SLC7A2

Alternative Name: SLC7A2 ([SLC7A2 Products](#))

Background: Alternative names: SLC7A2, Cationic amino acid transporter 2, CAT-2, Low affinity cationic amino acid transporter 2, ATRC2, Solute carrier family 7 member 2

Gene ID: 64554

NCBI Accession: [NM_003046](#)

UniProt: [B5D5N9](#)

Application Details

Application Notes: Optimal working dilution should be determined by the investigator.

Restrictions: For Research Use only

Handling

Format: Lyophilized

Reconstitution: 50 µL double distilled water (DDW).

Concentration: 1 mg/mL

Buffer: Reconstituted antibody contains phosphate buffered saline (PBS), pH 7.4, 1 % BSA, 0.05 % Sodium azide.

Preservative: Sodium azide

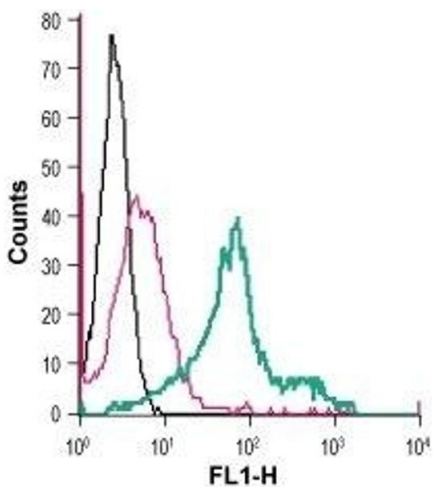
Precaution of Use: This product contains Sodium azide: a POISONOUS AND HAZARDOUS SUBSTANCE which should be handled by trained staff only.

Storage: RT, 4 °C, -20 °C

Storage Comment: Storage before reconstitution: The antibody ships as a lyophilized powder at room temperature. Upon arrival, it should be stored at -20°C.

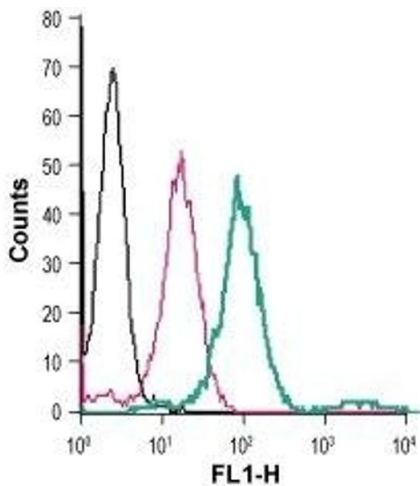
Storage after reconstitution: The reconstituted solution can be stored at 4°C, protected from the light, for up to 1 week. For longer periods, small aliquots should be stored at -20°C. Avoid multiple freezing and thawing. Centrifuge all antibody preparations before use (10000 x g 5

min).



Flow Cytometry

Image 1. Cell surface detection of SLC7A2 in live intact mouse J774 macrophage cells: (black line) Cells.(red line) Cells + Rabbit IgG isotype control-FITC.(green line) Cells + Anti-SLC7A2 (extracellular)-FITC Antibody (ABIN7043749, ABIN7045630, ABIN7045631 and ABIN7045632), (5 µg).



Flow Cytometry

Image 2. Cell surface detection of SLC7A2 in live intact human THP-1 monocytic leukemia cells: (black line) Cells.(red line) Cells + Rabbit IgG isotype control-FITC.(green line) Cells + Anti-SLC7A2 (extracellular)-FITC Antibody (ABIN7043749, ABIN7045630, ABIN7045631 and ABIN7045632), (5 µg).