

Datasheet for ABIN7043750

anti-SLC7A5 antibody (3rd Intracellular Loop)[Go to Product page](#)**2** Images

Overview

Quantity:	50 µL
Target:	SLC7A5
Binding Specificity:	3rd Intracellular Loop, AA 222-235
Reactivity:	Mouse, Rat
Host:	Rabbit
Clonality:	Polyclonal
Conjugate:	This SLC7A5 antibody is un-conjugated
Application:	Western Blotting (WB)

Product Details

Immunogen:	Immunogen: Synthetic peptide
	Immunogen Sequence: (C)KDIGQGDA SNLHQK, corresponding to amino acid residues 222-235 of rat LAT1
Isotype:	IgG
Cross-Reactivity (Details):	Not recommended for use with human samples.
Characteristics:	Anti-LAT1 (SLC7A5) Antibody (ABIN7043750, ABIN7044833 and ABIN7044834)) is a highly specific antibody directed against an epitope of the rat protein. The antibody can be used in western blot analysis. It has been designed to recognize SLC7A5 from rat and mouse samples. The antibody is unlikely to recognize the protein from human samples.
Purification:	Affinity purified on immobilized antigen.

Target Details

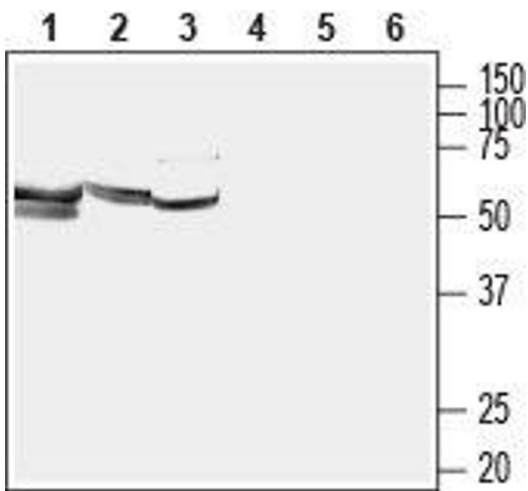
Target:	SLC7A5
Alternative Name:	LAT1 (SLC7A5) (SLC7A5 Products)
Background:	Alternative names: LAT1 (SLC7A5), CD98, Large neutral amino acids transporter small subunit 1, L-type amino acid transporter 1, 4F2 light chain, 4F2LC, Integral membrane protein E16, MPE16, Solute carrier family 7 member 5, TA1, Tumor-associated protein 1
Gene ID:	50719
NCBI Accession:	NM_003486
UniProt:	Q63016

Application Details

Application Notes:	Optimal working dilution should be determined by the investigator.
Restrictions:	For Research Use only

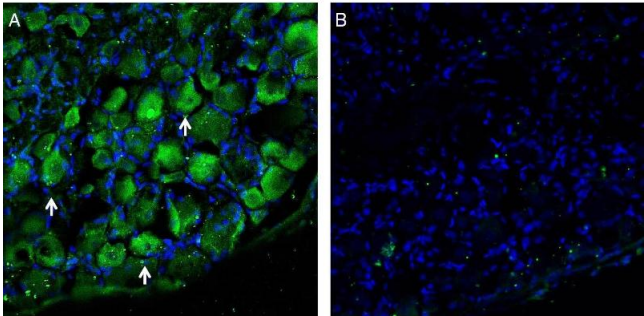
Handling

Format:	Lyophilized
Reconstitution:	25 µL, 50 µL or 0.2 mL double distilled water (DDW), depending on the sample size.
Concentration:	0.8 mg/mL
Buffer:	Reconstituted antibody contains phosphate buffered saline (PBS), pH 7.4, 1 % BSA, 0.05 % Sodium azide.
Preservative:	Sodium azide
Precaution of Use:	This product contains Sodium azide: a POISONOUS AND HAZARDOUS SUBSTANCE which should be handled by trained staff only.
Storage:	RT, 4 °C, -20 °C
Storage Comment:	<p>Storage before reconstitution: The antibody ships as a lyophilized powder at room temperature. Upon arrival, it should be stored at -20°C.</p> <p>Storage after reconstitution: The reconstituted solution can be stored at 4°C for up to 1 week. For longer periods, small aliquots should be stored at -20°C. Avoid multiple freezing and thawing. Centrifuge all antibody preparations before use (10000 x g 5 min).</p>



Western Blotting

Image 1. Western blot analysis of rat placenta lysate (lanes 1 and 4), mouse testes lysate (lanes 2 and 5) and rat skeletal muscle membrane (lanes 3 and 6): - 1-3. Anti-LAT1 (SLC7A5) Antibody (ABIN7043750, ABIN7044833 and ABIN7044834), (1:200). 4-6. Anti-LAT1 (SLC7A5) Antibody, preincubated with LAT1/SLC7A5 Blocking Peptide (#BLP-NT105).



Immunohistochemistry

Image 2. Expression of LAT1/SLC7A5 in rat dorsal root ganglion. - Immunohistochemical staining of perfusion-fixed frozen rat dorsal root ganglion (DRG) sections with Anti-LAT1 (SLC7A5) Antibody (ABIN7043750, ABIN7044833 and ABIN7044834), (1:200), followed by goat anti-rabbit-AlexaFluor-488.

A. LAT1 immunoreactivity (green) appeared in neuron profiles (arrows). B. Pre-incubation of the antibody with LAT1 (SLC7A5) Blocking Peptide (#BLP-NT105), suppressed staining. Cell nuclei are stained with DAPI (blue).