

Datasheet for ABIN7043751

anti-SLC7A11 antibody (3rd Extracellular Loop)

4 Images

[Go to Product page](#)

Overview

Quantity:	25 µL
Target:	SLC7A11
Binding Specificity:	3rd Extracellular Loop, AA 218-231
Reactivity:	Human, Mouse, Rat
Host:	Rabbit
Clonality:	Polyclonal
Application:	Western Blotting (WB)

Product Details

Immunogen:	Immunogen: Synthetic peptide Immunogen Sequence: (C)THHFKDAFSGRDTs, corresponding to amino acid residues 218-231 of mouse cystine/glutamate transporter
Isotype:	IgG
Characteristics:	Anti-xCT/SLC7A11 (extracellular) Antibody (ABIN7043751, ABIN7044835 and ABIN7044836)) is a highly selective antibody directed against an epitope of the mouse cystine/glutamate transporter. The antibody can be used in western blot, immunohistochemistry, and live cell flow cytometry. The antibody recognizes an extracellular epitope and can potentially be used for detecting the protein in living cells. It has been designed to recognize xCT from human, mouse, and rat samples.
Purification:	Affinity purified on immobilized antigen.

Target Details

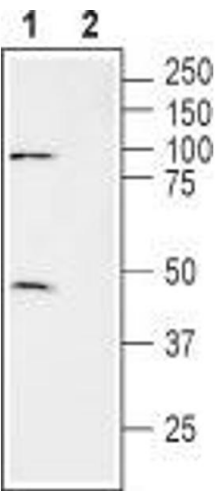
Target:	SLC7A11
Alternative Name:	xCT/SLC7A11 (SLC7A11 Products)
Background:	Alternative names: xCT/SLC7A11, Cystine/glutamate transporter, Amino acid transport system xc-, Solute carrier family 7 member 11, Calcium channel blocker resistance protein CCB1
Gene ID:	26570
NCBI Accession:	NM_014331
UniProt:	Q9WTR6

Application Details

Application Notes:	Optimal working dilution should be determined by the investigator.
Restrictions:	For Research Use only

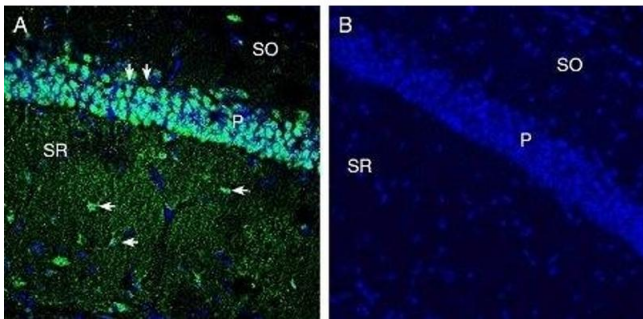
Handling

Format:	Lyophilized
Reconstitution:	25 µL, 50 µL or 0.2 mL double distilled water (DDW), depending on the sample size.
Concentration:	0.8 mg/mL
Buffer:	Reconstituted antibody contains phosphate buffered saline (PBS), pH 7.4, 1 % BSA, 0.05 % Sodium azide.
Preservative:	Sodium azide
Precaution of Use:	This product contains Sodium azide: a POISONOUS AND HAZARDOUS SUBSTANCE which should be handled by trained staff only.
Storage:	RT, 4 °C, -20 °C
Storage Comment:	<p>Storage before reconstitution: The antibody ships as a lyophilized powder at room temperature. Upon arrival, it should be stored at -20°C.</p> <p>Storage after reconstitution: The reconstituted solution can be stored at 4°C for up to 1 week. For longer periods, small aliquots should be stored at -20°C. Avoid multiple freezing and thawing. Centrifuge all antibody preparations before use (10000 x g 5 min).</p>



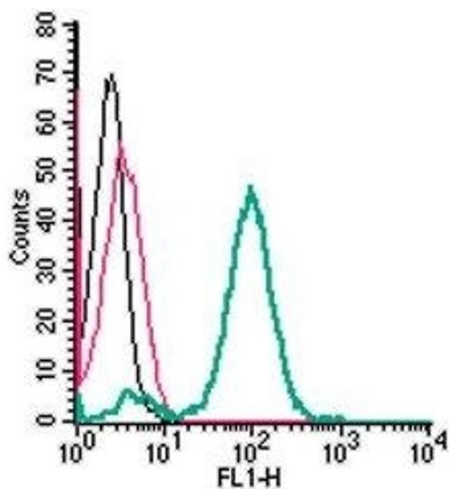
Western Blotting

Image 1. Western blot analysis of human brain glioblastoma cell line (U-87 MG) lysate: - 1. Anti-xCT/SLC7A11 (extracellular) Antibody (1:200). 2. Anti-xCT/SLC7A11 (extracellular) Antibody, preincubated with xCT/SLC7A11 (extracellular) Blocking Peptide (#BLP-NT111).



Immunohistochemistry

Image 2. Expression of xCT/SLC7A11 in mouse hippocampus - Immunohistochemical staining of perfusion-fixed frozen mouse brain sections with Anti-xCT/SLC7A11 (extracellular) Antibody (ABIN7043751, ABIN7044835 and ABIN7044836), (1:300), followed by goat anti-rabbit-AlexaFluor-488. A. SLC7A11 staining in hippocampal CA1 region is detected in the pyramidal layer (P, vertical arrows) and in glial profiles in stratum radiatum (SR, horizontal arrows). B. Pre-incubation of the antibody with xCT/SLC7A11 (extracellular) Blocking Peptide (#BLP-NT111), suppresses staining. Cell nuclei are stained with DAPI (blue). P = Pyramidal layer, SR = Stratum radiatum, SO = Stratum oriens.



Flow Cytometry

Image 3. Cell surface detection of xCT/SLC7A11 by indirect flow cytometry in live intact human THP-1 monocytic leukemia cells: (black line) Cells. (red line) Cells + goat-anti-rabbit-FITC. (green line) Cells + Anti-xCT/SLC7A11 (extracellular) Antibody (ABIN7043751, ABIN7044835 and ABIN7044836), (2.5 µg) + goat-anti-rabbit-FITC.

Please check the [product details page](#) for more images. Overall 4 images are available for ABIN7043751.