

Datasheet for ABIN7043752

anti-SLC7A11 antibody (3rd Extracellular Loop) (FITC)**2** Images[Go to Product page](#)

Overview

Quantity:	50 µL
Target:	SLC7A11
Binding Specificity:	3rd Extracellular Loop, AA 218-231
Reactivity:	Human, Mouse, Rat
Host:	Rabbit
Clonality:	Polyclonal
Conjugate:	This SLC7A11 antibody is conjugated to FITC
Application:	Flow Cytometry (FACS)

Product Details

Immunogen:	Immunogen: Synthetic peptide
	Immunogen Sequence: (C)THHFKDAFSGRDTS, corresponding to amino acid residues 218-231 of mouse cystine/glutamate transporter
Isotype:	IgG
Characteristics:	Anti-xCT/SLC7A11 (extracellular) Antibody (ABIN7043751, ABIN7044835 and ABIN7044836)) is a highly selective antibody directed against an epitope of the mouse cystine/glutamate transporter. The antibody can be used in western blot analysis. It has been designed to recognize xCT from human, mouse, and rat samples. \nAnti-xCT/SLC7A11 (extracellular)-FITC Antibody (ABIN7043751, ABIN7044835 and ABIN7044836)-F) is directly conjugated to fluorescein isothiocyanate (FITC). This labeled antibody can be used in immunofluorescent applications such as direct live cell flow cytometry.

Product Details

Purification: Affinity purified on immobilized antigen.

Target Details

Target: SLC7A11

Alternative Name: xCT/SLC7A11 ([SLC7A11 Products](#))

Background: Alternative names: xCT/SLC7A11, Cystine/glutamate transporter, Amino acid transport system xc-, Solute carrier family 7 member 11, Calcium channel blocker resistance protein CCBR1

Gene ID: 26570

NCBI Accession: [NM_014331](#)

UniProt: [Q9WTR6](#)

Application Details

Application Notes: Optimal working dilution should be determined by the investigator.

Restrictions: For Research Use only

Handling

Format: Lyophilized

Reconstitution: 50 µL double distilled water (DDW).

Concentration: 1 mg/mL

Buffer: Reconstituted antibody contains phosphate buffered saline (PBS), pH 7.4, 1 % BSA, 0.05 % Sodium azide.

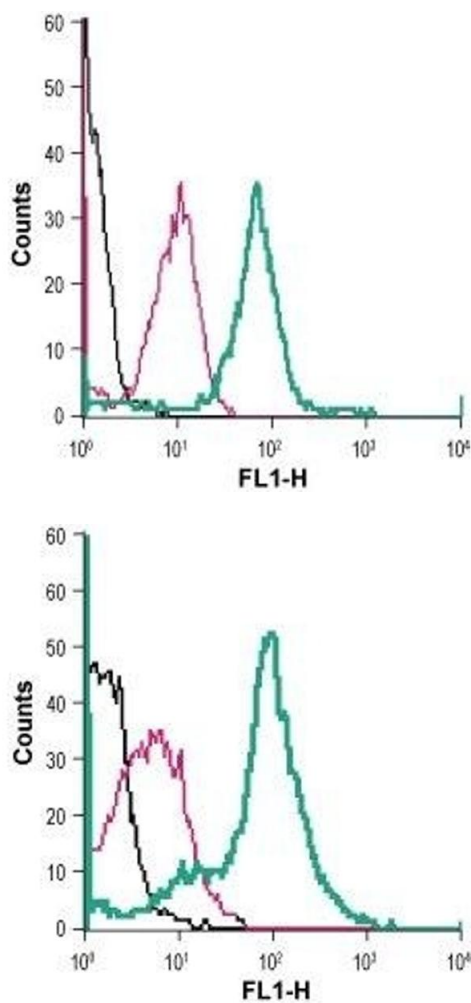
Preservative: Sodium azide

Precaution of Use: This product contains Sodium azide: a POISONOUS AND HAZARDOUS SUBSTANCE which should be handled by trained staff only.

Storage: RT, 4 °C, -20 °C

Storage Comment: Storage before reconstitution: The antibody ships as a lyophilized powder at room temperature. Upon arrival, it should be stored at -20°C.
Storage after reconstitution: The reconstituted solution can be stored at 4°C, protected from the light, for up to 1 week. For longer periods, small aliquots should be stored at -20°C. Avoid multiple freezing and thawing. Centrifuge all antibody preparations before use (10000 x g 5

min).



Flow Cytometry

Image 1. Cell surface detection of cystine/glutamate transporter in live intact human THP-1 monocytic leukemia cells:(black line) Cells.(red line) Cells + rabbit IgG isotype control-FITC. (green line) Cells + Anti-xCT/SLC7A11 (extracellular)-FITC Antibody (ABIN7043752, ABIN7045633, ABIN7045634 and ABIN7045635), (2.5 µg).

Flow Cytometry

Image 2. Cell surface detection of cystine/glutamate transporter in live intact mouse J774 macrophage cells:(black line) Cells.(red line) Cells + rabbit IgG isotype control-FITC. (green line) Cells + Anti-xCT/SLC7A11 (extracellular)-FITC Antibody (ABIN7043752, ABIN7045633, ABIN7045634 and ABIN7045635), (5 µg).