

Datasheet for ABIN7043753

## anti-SLC7A11 antibody (3rd Extracellular Loop) (PE)



[Go to Product page](#)

### 2 Images

#### Overview

Quantity:	50 µL
Target:	SLC7A11
Binding Specificity:	3rd Extracellular Loop, AA 218-231
Reactivity:	Human, Mouse, Rat
Host:	Rabbit
Clonality:	Polyclonal
Conjugate:	This SLC7A11 antibody is conjugated to PE
Application:	Flow Cytometry (FACS)

#### Product Details

Immunogen:	<p>Immunogen: Synthetic peptide</p> <p>Immunogen Sequence: (C)THHFKDAFSGRDTS, corresponding to amino acid residues 218-231 of mouse xCT/SLC7A11</p>
Isotype:	IgG
Characteristics:	<p>Anti-xCT/SLC7A11 (extracellular) Antibody (ABIN7043751, ABIN7044835 and ABIN7044836)) is a highly selective antibody directed against an epitope of mouse cystine/glutamate transporter. The antibody can be used in western blot analysis. It has been designed to recognize xCT from human, mouse, and rat samples.</p> <p>Anti-xCT/SLC7A11 (extracellular)-PE Antibody (ABIN7043753, ABIN7045636, ABIN7045637, ABIN7045638 and ABIN7045639)) is directly conjugated to Phycoerythrin (PE). This labeled antibody can be used in immunofluorescent applications such as direct flow cytometry and live cell imaging.</p>

## Product Details

---

Purification: Affinity purified on immobilized antigen.

## Target Details

---

Target: SLC7A11

Alternative Name: xCT/SLC7A11 ([SLC7A11 Products](#))

Background: Alternative names: Cystine/glutamate transporter, Amino acid transport system xc-, Solute carrier family 7 member 11, Calcium channel blocker resistance protein CCBR1

Gene ID: 42417

NCBI Accession: [NM\\_014331](#)

UniProt: [Q9UPY5](#)

## Application Details

---

Application Notes: Optimal working dilution should be determined by the investigator.

Restrictions: For Research Use only

## Handling

---

Format: Lyophilized

Reconstitution: 15 µL or 50 µL double distilled water (DDW), depending on the sample size.

Concentration: 1 mg/mL

Buffer: Reconstituted antibody contains phosphate buffered saline (PBS), pH 7.4, 1 % BSA, 0.05 % Sodium azide.

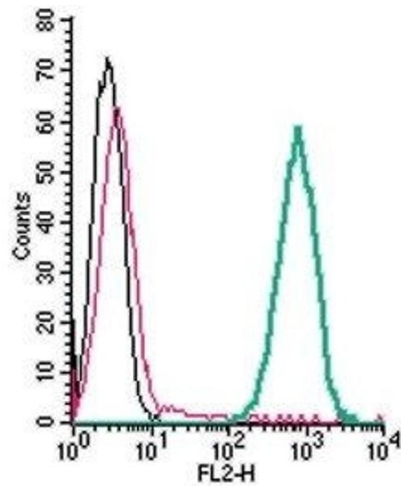
Preservative: Sodium azide

Precaution of Use: This product contains Sodium azide: a POISONOUS AND HAZARDOUS SUBSTANCE which should be handled by trained staff only.

Storage: RT, 4 °C, -20 °C

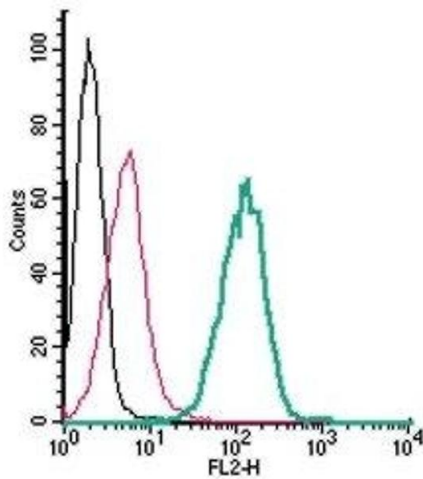
Storage Comment: Storage before reconstitution: The antibody ships as a lyophilized powder at room temperature. Upon arrival, it should be stored at -20°C.  
Storage after reconstitution: The reconstituted solution can be stored at 4°C, protected from the light, for up to 1 week. For longer periods, small aliquots should be stored at -20°C. Avoid multiple freezing and thawing. Centrifuge all antibody preparations before use (10000 x g 5

min).



#### Flow Cytometry

**Image 1.** Cell surface detection of xCT/SLC7A11 in live intact mouse J774 macrophage cells: (black line) Cells.(red line) Cells + Rabbit IgG isotype control-PE. (green line) Cells + Anti-xCT/SLC7A11 (extracellular)-PE Antibody (ABIN7043753, ABIN7045636, ABIN7045637, ABIN7045638 and ABIN7045639) (2.5 µg).



#### Flow Cytometry

**Image 2.** Cell surface detection of xCT/SLC7A11 in live intact human THP-1 monocytic leukemia cells: (black line) Cells.(red line) Cells + Rabbit IgG isotype control-PE. (green line) Cells + Anti-xCT/SLC7A11 (extracellular)-PE Antibody (ABIN7043753, ABIN7045636, ABIN7045637, ABIN7045638 and ABIN7045639) (2.5 µg).