

Datasheet for ABIN7043754

anti-SLC8A1 antibody (3rd Intracellular Loop)

3 Images

[Go to Product page](#)

Overview

Quantity:	25 µL
Target:	SLC8A1
Binding Specificity:	3rd Intracellular Loop, AA 308-320
Reactivity:	Human, Rat, Mouse
Host:	Rabbit
Clonality:	Polyclonal
Application:	Western Blotting (WB), Immunohistochemistry (IHC), Immunofluorescence (IF)

Product Details

Immunogen:	Immunogen: Synthetic peptide Immunogen Sequence: (C)EVDERDQDDEEAR, corresponding to amino acid residues 308-320 of rat NCX1
Isotype:	IgG
Characteristics:	Anti-NCX1 (SLC8A1) Antibody (ABIN7043754, ABIN7044875 and ABIN7044876)) is a highly specific antibody directed against an epitope of the rat Na ⁺ /Ca ²⁺ exchange protein 1. The antibody can be used in western blot and immunohistochemistry applications. It has been designed to recognize NCX1 from human, rat, and mouse samples.
Purification:	Affinity purified on immobilized antigen.

Target Details

Target:	SLC8A1
---------	--------

Target Details

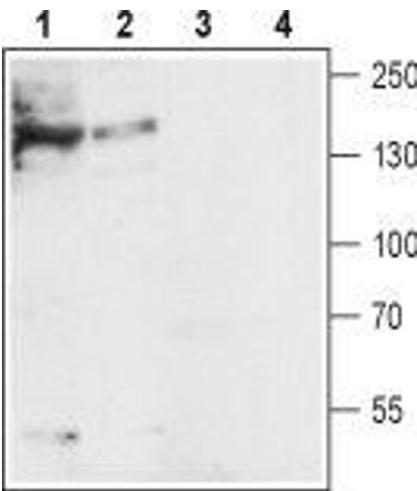
Alternative Name:	NCX1 (SLC8A1) (SLC8A1 Products)
Background:	Alternative names: NCX1 (SLC8A1), Sodium/calcium exchanger 1, Na ⁺ /Ca ²⁺ exchange protein 1
Gene ID:	29715
NCBI Accession:	NM_021097
UniProt:	Q01728
Pathways:	Myometrial Relaxation and Contraction

Application Details

Application Notes:	Optimal working dilution should be determined by the investigator.
Restrictions:	For Research Use only

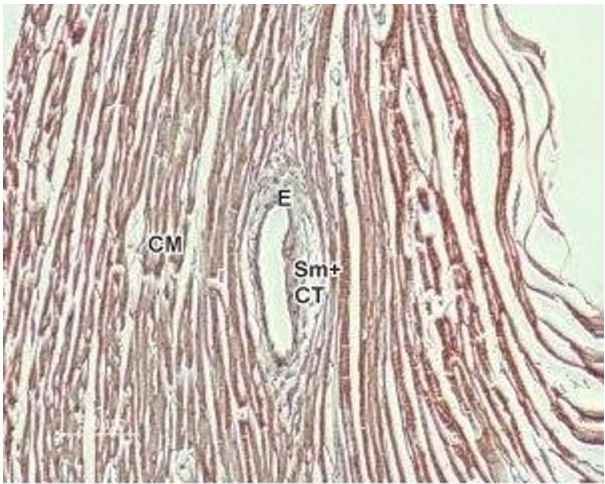
Handling

Format:	Lyophilized
Reconstitution:	25 µL, 50 µL or 0.2 mL double distilled water (DDW), depending on the sample size.
Concentration:	0.8 mg/mL
Buffer:	Reconstituted antibody contains phosphate buffered saline (PBS), pH 7.4, 1 % BSA, 0.05 % Sodium azide.
Preservative:	Sodium azide
Precaution of Use:	This product contains Sodium azide: a POISONOUS AND HAZARDOUS SUBSTANCE which should be handled by trained staff only.
Storage:	RT, 4 °C, -20 °C
Storage Comment:	<p>Storage before reconstitution: The antibody ships as a lyophilized powder at room temperature. Upon arrival, it should be stored at -20°C.</p> <p>Storage after reconstitution: The reconstituted solution can be stored at 4°C for up to 1 week. For longer periods, small aliquots should be stored at -20°C. Avoid multiple freezing and thawing. Centrifuge all antibody preparations before use (10000 x g 5 min).</p>



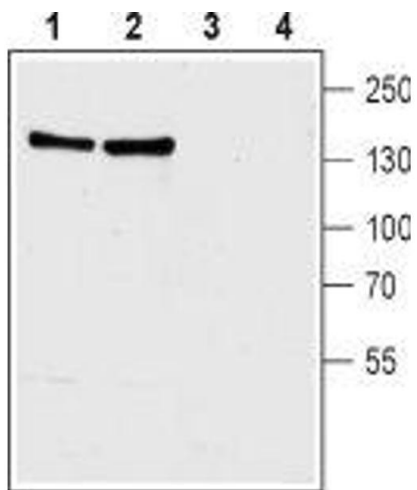
Western Blotting

Image 1. Western blot analysis of mouse (lanes 1 and 3) and rat (lanes 2 and 4) heart lysates: - 1,2. Anti-NCX1 (SLC8A1) Antibody (ABIN7043754, ABIN7044875 and ABIN7044876), (1:200).3,4. Anti-NCX1 (SLC8A1) Antibody, preincubated with NCX1/SLC8A1 Blocking Peptide (#BLP-NX011).



Immunohistochemistry

Image 2. Expression of NCX1 in rat heart - Immunohistochemical staining of rat heart paraffin-embedded sections using Anti-NCX1 (SLC8A1) Antibody (ABIN7043754, ABIN7044875 and ABIN7044876), (1:100). Hematoxylin is used as the counterstain. NCX1 labeling (brown) appears in the cardiac muscle cells (CM), and not in other parts of the tissue, such as the blood vessel endothelium (E), the connective tissue (CT) and smooth muscle (SM).



Western Blotting

Image 3. Western blot analysis of rat (lanes 1 and 3) and mouse (lanes 2 and 4) brain membranes: - 1,2. Anti-NCX1 (SLC8A1) Antibody (ABIN7043754, ABIN7044875 and ABIN7044876), (1:200).3,4. Anti-NCX1 (SLC8A1) Antibody, preincubated with NCX1/SLC8A1 Blocking Peptide (#BLP-NX011).