

Datasheet for ABIN7043757

anti-SLC9A2 antibody (C-Term, Intracellular)**3** Images[Go to Product page](#)

Overview

Quantity:	50 µL
Target:	SLC9A2
Binding Specificity:	AA 797-812, C-Term, Intracellular
Reactivity:	Human, Rat, Mouse
Host:	Rabbit
Clonality:	Polyclonal
Conjugate:	This SLC9A2 antibody is un-conjugated
Application:	Western Blotting (WB), Immunohistochemistry (IHC), Immunofluorescence (IF)

Product Details

Immunogen:	Immunogen: Synthetic peptide
	Immunogen Sequence: (C)RASEPGNRKGRLGNEK, corresponding to amino acid residues 797-812 of rat NHE-2
Isotype:	IgG
Characteristics:	Anti-Na ⁺ /H ⁺ Exchanger 2 (NHE-2) Antibody (ABIN7043757, ABIN7044867 and ABIN7044868)) is a highly specific antibody directed against an epitope of the rat protein. The antibody can be used in western blot and immunohistochemistry applications. It has been designed to recognize NHE-2 from human, rat, and mouse samples.
Purification:	Affinity purified on immobilized antigen.

Target Details

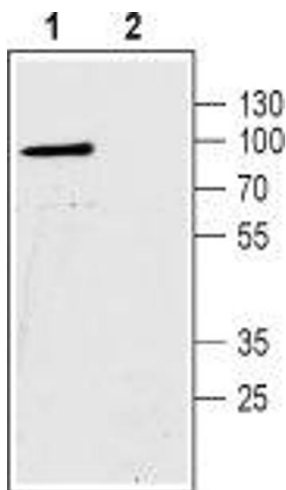
Target:	SLC9A2
Alternative Name:	Na ⁺ /H ⁺ Exchanger 2 (NHE-2) (SLC9A2 Products)
Background:	Alternative names: Na ⁺ /H ⁺ Exchanger 2 (NHE-2), Sodium/hydrogen exchanger 2, SLC9A2
Gene ID:	24783
NCBI Accession:	NM_003048
UniProt:	P48763
Pathways:	Proton Transport

Application Details

Application Notes:	Optimal working dilution should be determined by the investigator.
Restrictions:	For Research Use only

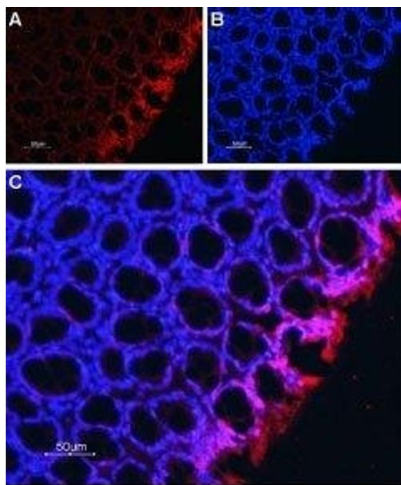
Handling

Format:	Lyophilized
Reconstitution:	25 µL, 50 µL or 0.2 mL double distilled water (DDW), depending on the sample size.
Concentration:	0.8 mg/mL
Buffer:	Reconstituted antibody contains phosphate buffered saline (PBS), pH 7.4, 1 % BSA, 0.05 % Sodium azide.
Preservative:	Sodium azide
Precaution of Use:	This product contains Sodium azide: a POISONOUS AND HAZARDOUS SUBSTANCE which should be handled by trained staff only.
Storage:	RT, 4 °C, -20 °C
Storage Comment:	<p>Storage before reconstitution: The antibody ships as a lyophilized powder at room temperature. Upon arrival, it should be stored at -20°C.</p> <p>Storage after reconstitution: The reconstituted solution can be stored at 4°C for up to 1 week. For longer periods, small aliquots should be stored at -20°C. Avoid multiple freezing and thawing. Centrifuge all antibody preparations before use (10000 x g 5 min).</p>



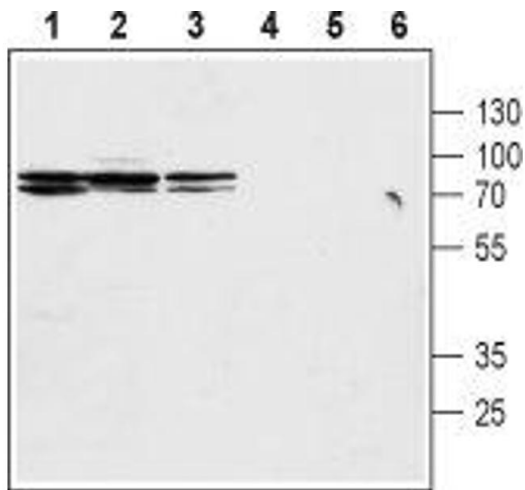
Western Blotting

Image 1. Western blot analysis of human Colo-205 colorectal carcinoma cell lysates: - 1. Anti-Na⁺/H⁺ Exchanger 2 (NHE-2) Antibody (ABIN7043757, ABIN7044867 and ABIN7044868), (1:200).2. Anti-Na⁺/H⁺ Exchanger 2 (NHE-2) Antibody, preincubated with Na⁺/H⁺ Exchanger 2/NHE-2 Blocking Peptide (#BLP-NX002).



Immunohistochemistry

Image 2. Expression of Na⁺/H⁺ exchanger 2 in rat colon - Immunohistochemical staining of rat colon sections (paraffin-embedded) using Anti-Na⁺/H⁺ Exchanger 2 (NHE-2) Antibody (ABIN7043757, ABIN7044867 and ABIN7044868), (1:50). A. NHE-2 staining is shown in red. B. Cell nuclei were labeled with DAPI (blue). C. Merge of the two images.



Western Blotting

Image 3. Western blot analysis of rat kidney membranes (lanes 1 and 4), mouse kidney lysates (lanes 2 and 5) and rat stomach lysates (lanes 3 and 6): - 1-3. Anti-Na⁺/H⁺ Exchanger 2 (NHE-2) Antibody (ABIN7043757, ABIN7044867 and ABIN7044868), (1:200).4-6. Anti-Na⁺/H⁺ Exchanger 2 (NHE-2) Antibody, preincubated with Na⁺/H⁺ Exchanger 2/NHE-2 Blocking Peptide (#BLP-NX002).