

Datasheet for ABIN7043760

anti-SLC9A6 antibody (C-Term, Intracellular)[Go to Product page](#)

4 Images

Overview

Quantity:	50 µL
Target:	SLC9A6
Binding Specificity:	AA 515-528, C-Term, Intracellular
Reactivity:	Human, Mouse, Rat
Host:	Rabbit
Clonality:	Polyclonal
Conjugate:	This SLC9A6 antibody is un-conjugated
Application:	Western Blotting (WB), Immunohistochemistry (IHC), Immunofluorescence (IF)

Product Details

Immunogen:	Immunogen: Synthetic peptide
	Immunogen Sequence: (C)EHLGVPENERRTTK, corresponding to amino acid residues 515-528 of human NHE-6
Isotype:	IgG
Characteristics:	Anti-Na ⁺ /H ⁺ Exchanger 6 (NHE-6) Antibody (ABIN7043760, ABIN7044871 and ABIN7044872)) is a highly specific antibody directed against an epitope of the human protein. The antibody can be used in western blot and immunohistochemistry applications. It has been designed to recognize NHE-6 from human, rat, and mouse samples.
Purification:	Affinity purified on immobilized antigen.

Target Details

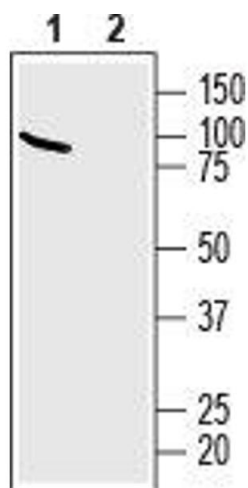
Target:	SLC9A6
Alternative Name:	Na ⁺ /H ⁺ Exchanger 6 (NHE-6) (SLC9A6 Products)
Background:	Alternative names: Na ⁺ /H ⁺ Exchanger 6 (NHE-6), Sodium/hydrogen exchanger 6, NHE6, SLC9A6
Gene ID:	10479
NCBI Accession:	NM_006359
UniProt:	Q92581

Application Details

Application Notes:	Optimal working dilution should be determined by the investigator.
Restrictions:	For Research Use only

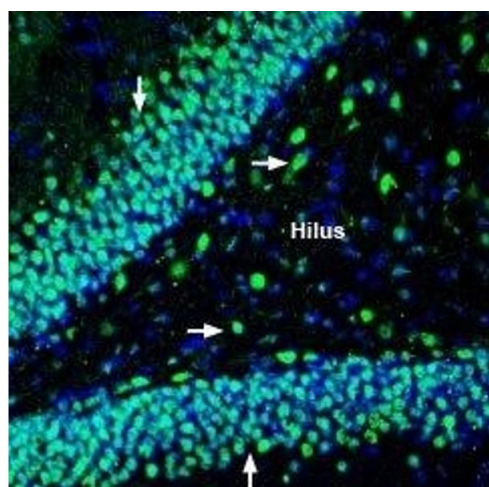
Handling

Format:	Lyophilized
Reconstitution:	25 µL, 50 µL or 0.2 mL double distilled water (DDW), depending on the sample size.
Concentration:	0.8 mg/mL
Buffer:	Reconstituted antibody contains phosphate buffered saline (PBS), pH 7.4, 1 % BSA, 0.05 % Sodium azide.
Preservative:	Sodium azide
Precaution of Use:	This product contains Sodium azide: a POISONOUS AND HAZARDOUS SUBSTANCE which should be handled by trained staff only.
Storage:	RT, 4 °C, -20 °C
Storage Comment:	<p>Storage before reconstitution: The antibody ships as a lyophilized powder at room temperature. Upon arrival, it should be stored at -20°C.</p> <p>Storage after reconstitution: The reconstituted solution can be stored at 4°C for up to 1 week. For longer periods, small aliquots should be stored at -20°C. Avoid multiple freezing and thawing. Centrifuge all antibody preparations before use (10000 x g 5 min).</p>



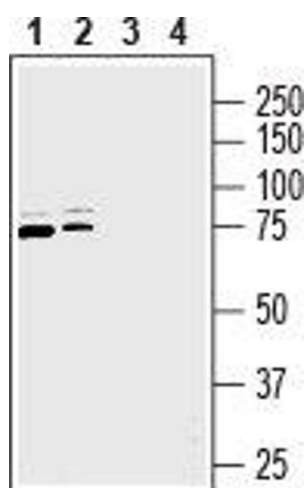
Western Blotting

Image 1. Western blot analysis of human SH-SY5Y neuroblastoma cell line lysate: - 1. Anti-Na⁺/H⁺ Exchanger 6 (NHE-6) Antibody (ABIN7043760, ABIN7044871 and ABIN7044872), (1:200). 2. Anti-Na⁺/H⁺ Exchanger 6 (NHE-6) Antibody, preincubated with Na⁺/H⁺ Exchanger 6/NHE-6 Blocking Peptide (#BLP-NX006).



Immunohistochemistry

Image 2. Expression of NHE-6 in rat hippocampus - Immunohistochemical staining of perfusion-fixed frozen rat brain sections with Anti-Na⁺/H⁺ Exchanger 6 (NHE-6) Antibody (ABIN7043760, ABIN7044871 and ABIN7044872), (1:200), followed by goat-anti-rabbit-AlexaFluor-488. NHE-6 staining (green) in hippocampal dentate gyrus region, appears in neuronal soma outlines in the hilus (horizontal arrows) and the outer granule layer (vertical arrows). Cell nuclei were stained with DAPI (blue).



Western Blotting

Image 3. Western blot analysis of rat brain membranes (lanes 1 and 3) and new born rat brain membranes (lanes 2 and 4): - 1,2. Anti-Na⁺/H⁺ Exchanger 6 (NHE-6) Antibody (ABIN7043760, ABIN7044871 and ABIN7044872), (1:200). 3,4. Anti-Na⁺/H⁺ Exchanger 6 (NHE-6) Antibody, preincubated with Na⁺/H⁺ Exchanger 6/NHE-6 Blocking Peptide (#BLP-NX006).

Please check the [product details page](#) for more images. Overall 4 images are available for ABIN7043760.