

Datasheet for ABIN7043765

anti-SSTR2 antibody (Extracellular, N-Term)[Go to Product page](#)

4 Images

Overview

| | |
|----------------------|--|
| Quantity: | 50 µL |
| Target: | SSTR2 |
| Binding Specificity: | AA 30-43, Extracellular, N-Term |
| Reactivity: | Human, Mouse, Rat |
| Host: | Rabbit |
| Clonality: | Polyclonal |
| Conjugate: | This SSTR2 antibody is un-conjugated |
| Application: | Western Blotting (WB), Immunohistochemistry (IHC), Immunofluorescence (IF), Immunocytochemistry (ICC), Live Cell Imaging (LCI) |

Product Details

| | |
|------------------|---|
| Immunogen: | Immunogen: Synthetic peptide Immunogen Sequence: (C)GSNQTEPYDMSN, corresponding to amino acid residues 30-43 of rat SSTR2 |
| Isotype: | IgG |
| Characteristics: | Anti-Somatostatin Receptor Type 2 (extracellular) Antibody is directed against the N-terminal domain of the rat SSTR2. Anti-Somatostatin Receptor Type 2 (extracellular) Antibody (ABIN7043765, ABIN7045268 and ABIN7045269)), can be used in western blot, immunohistochemistry and immunocytochemistry applications. It has been designed to recognize SSTR2 from mouse, human and rat samples. |
| Purification: | Affinity purified on immobilized antigen. |

Target Details

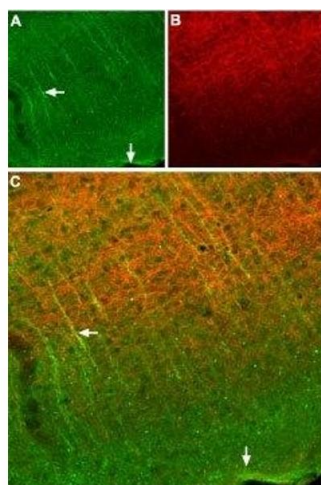
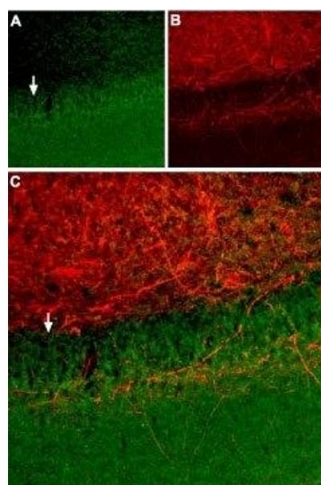
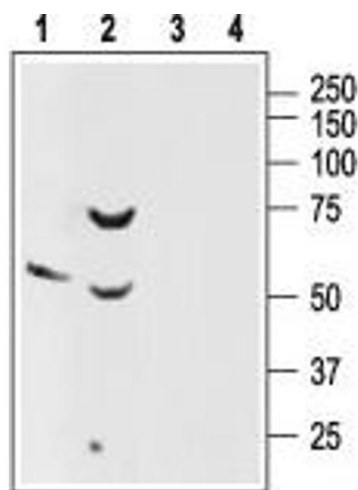
| | |
|-------------------|--|
| Target: | SSTR2 |
| Alternative Name: | Somatostatin Receptor Type 2 (SSTR2 Products) |
| Background: | Alternative names: Somatostatin Receptor Type 2, SSTR2, SS2R, Smstr2, SRIF1A |
| Gene ID: | 54305 |
| NCBI Accession: | NM_001050 |
| UniProt: | P30680 |

Application Details

| | |
|--------------------|--|
| Application Notes: | Optimal working dilution should be determined by the investigator. |
| Restrictions: | For Research Use only |

Handling

| | |
|--------------------|--|
| Format: | Lyophilized |
| Reconstitution: | 25 µL, 50 µL or 0.2 mL double distilled water (DDW), depending on the sample size. |
| Concentration: | 0.6 mg/mL |
| Buffer: | Reconstituted antibody contains phosphate buffered saline (PBS), pH 7.4, 1 % BSA, 0.05 % Sodium azide. |
| Preservative: | Sodium azide |
| Precaution of Use: | This product contains Sodium azide: a POISONOUS AND HAZARDOUS SUBSTANCE which should be handled by trained staff only. |
| Storage: | RT, 4 °C, -20 °C |
| Storage Comment: | <p>Storage before reconstitution: The antibody ships as a lyophilized powder at room temperature. Upon arrival, it should be stored at -20°C.</p> <p>Storage after reconstitution: The reconstituted solution can be stored at 4°C for up to 1 week. For longer periods, small aliquots should be stored at -20°C. Avoid multiple freezing and thawing. Centrifuge all antibody preparations before use (10000 x g 5 min).</p> |



Western Blotting

Image 1. Western blot analysis of rat brain (lanes 1 and 3) and pancreas (lanes 2 and 4) lysates: - 1. Anti-Somatostatin Receptor Type 2 (extracellular) Antibody (ABIN7043765, ABIN7045268 and ABIN7045269), (1:200). 2. Anti-Somatostatin Receptor Type 2 (extracellular) Antibody, preincubated with Somatostatin Receptor Type 2 (extracellular) Blocking Peptide (#BLP-SR006).

Immunohistochemistry

Image 2. Expression of SSTR2 in rat hippocampus - Immunohistochemical staining of rat hippocampus using Anti-Somatostatin Receptor Type 2 (extracellular) Antibody (ABIN7043765, ABIN7045268 and ABIN7045269). A. SSTR2 appears in neural processes (green) that are perpendicular to dentate granule layer (arrow). B. Staining of axons with mouse anti-Neurofilament 200 (NF200, red). C. Confocal merge of SSTR2 and NF200 images suggests that SSTR2 is not present in axons that run through the granule layer and hilus, but rather in neuronal dendrites that ascend toward the dentate hilus (arrow).

Immunohistochemistry

Image 3. Expression of SSTR2 in mouse cortex - Immunohistochemical staining of frozen mouse cortex sections using Anti-Somatostatin Receptor Type 2 (extracellular) Antibody (ABIN7043765, ABIN7045268 and ABIN7045269), (1:100). A. SSTR2 appears in neural processes (green, horizontal arrow) that are perpendicular to the cortical surface (vertical arrow). B. Staining of axons with mouse anti-Neurofilament 200 (NF200, red) appears mostly in the deep layers. C. Confocal merge of SSTR2 and NF200 images suggests that SSTR2 is

not present in axons that run in the deep layers, but rather in neuronal dendrites that ascend toward upper layers of cortex (vertical arrow).

Please check the [product details page](#) for more images. Overall 4 images are available for ABIN7043765.